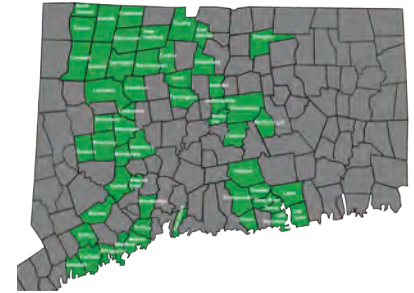




Do you live in one of the towns shown **in green** on this map? Look at all these things **you can now recycle** thanks to CRRA!



✓ **NOW!** Large rigid plastic items – toys, buckets, coolers and more!

✓ **NOW!** ALL plastic food and beverage containers!

NOTHING made of black plastic, no Styrofoam or other foam plastics and no plastic bags, please.

✓ **NOW!** Phone books and hard-cover books!

Remove hard covers and place the covers in the trash; maximum **two** phone books per pickup.

✓ Mixed paper – newspapers, magazines, bills, junk mail, computer paper and printouts
Tear away and shred name, address and other personal information from bills and envelopes.

✓ Corrugated cardboard and chipboard (cereal boxes, shoe boxes, pasta boxes)
Remove and place in trash liners from cereal boxes and windows from pasta boxes.

✓ Glass food and drink jars and bottles
Rinsed and unbroken; leave labels on, discard caps (lids are okay).

✓ Aluminum and steel cans
Including aerosol cans (**NO PAINT, PESTICIDES OR OTHER HAZARDOUS WASTES**) up to three gallons.

✓ Juice boxes and milk or juice containers
Rinse and remove caps and straws.

✓ No. 1 and No. 2 plastic laundry product containers
Up to three gallons – **rinsed** but not crushed.

✓ **Redeem all deposit cans and bottles!**

To find out more, visit www.crra.org.

Illustrated Guide to Residential Single-Stream Recycling

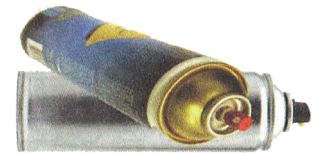
👍 **DO RECYCLE:**



Phone books & hard-cover books



Large plastic items such as toys, recycling bins, coolers, baskets, containers & buckets



Empty aerosol cans (non-toxic)



Plastic beverage & food containers #3-#7 under 3 gallons



Newspapers & inserts, magazines, junk mail, catalogs, white & colored paper, computer paper, cereal boxes, shoe boxes, paper egg cartons, corrugated cardboard



All #1-#2 plastic containers under 3 gallons



Glass food & beverage jars, bottles & jugs



Steel, tin & aluminum food trays, foil & cans



Milk & juice cartons, juice boxes

👎 **DO NOT RECYCLE:**



Motor oil, antifreeze, paint or any other hazardous material containers



Metal, ceramic & glass pots & pans, scrap metal, pottery



Batteries or electronics



Plastic bags, anything made of black plastics



Propane tanks



Mirrors, windows, light bulbs or drinking glasses