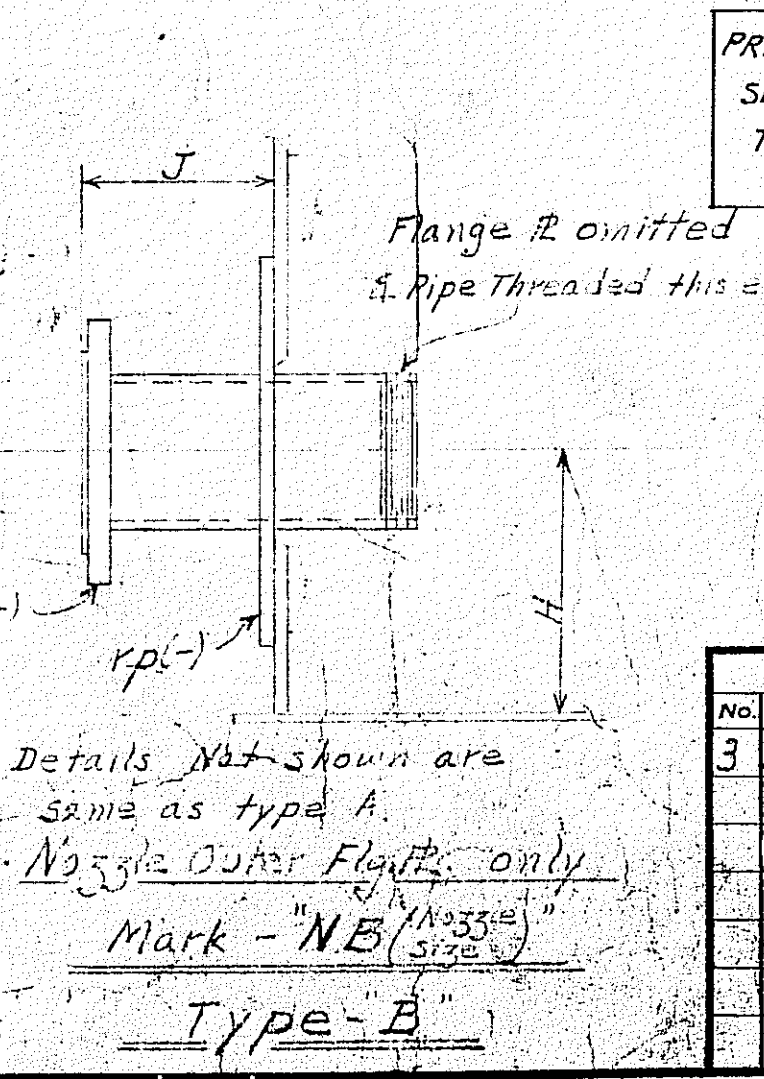
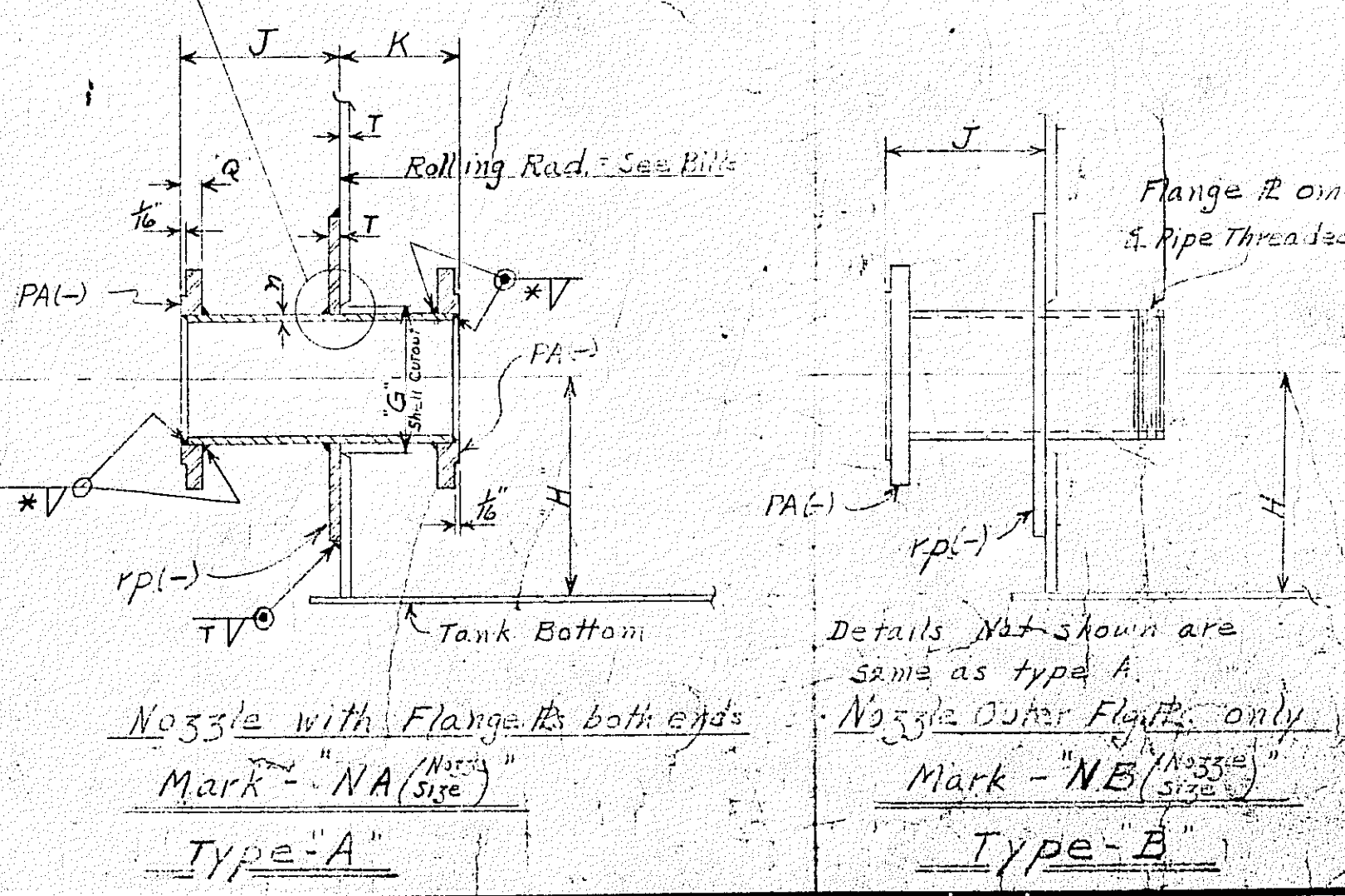
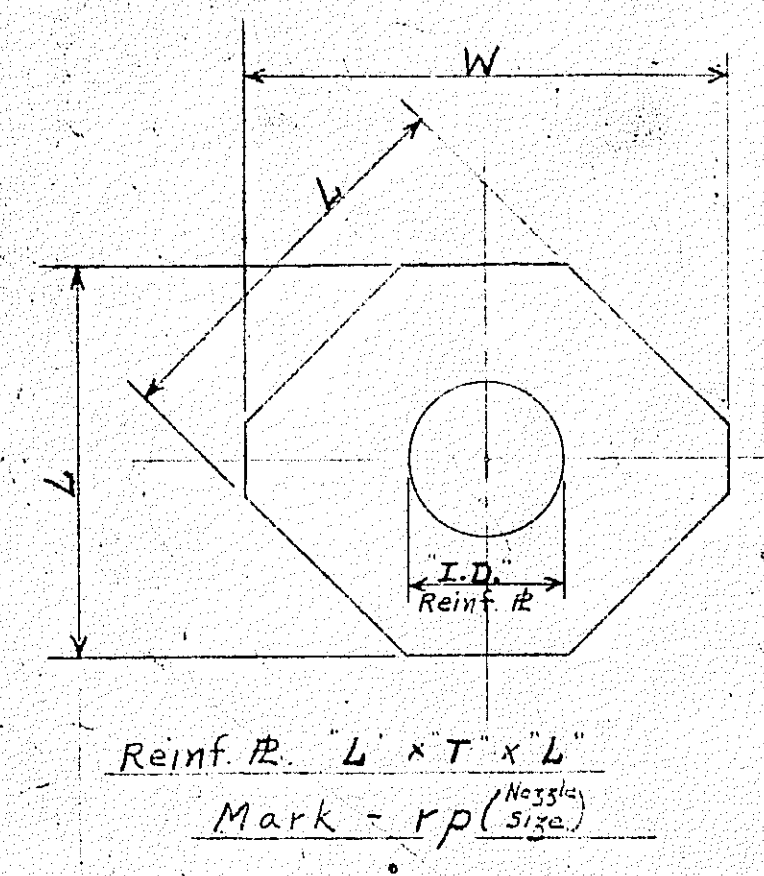
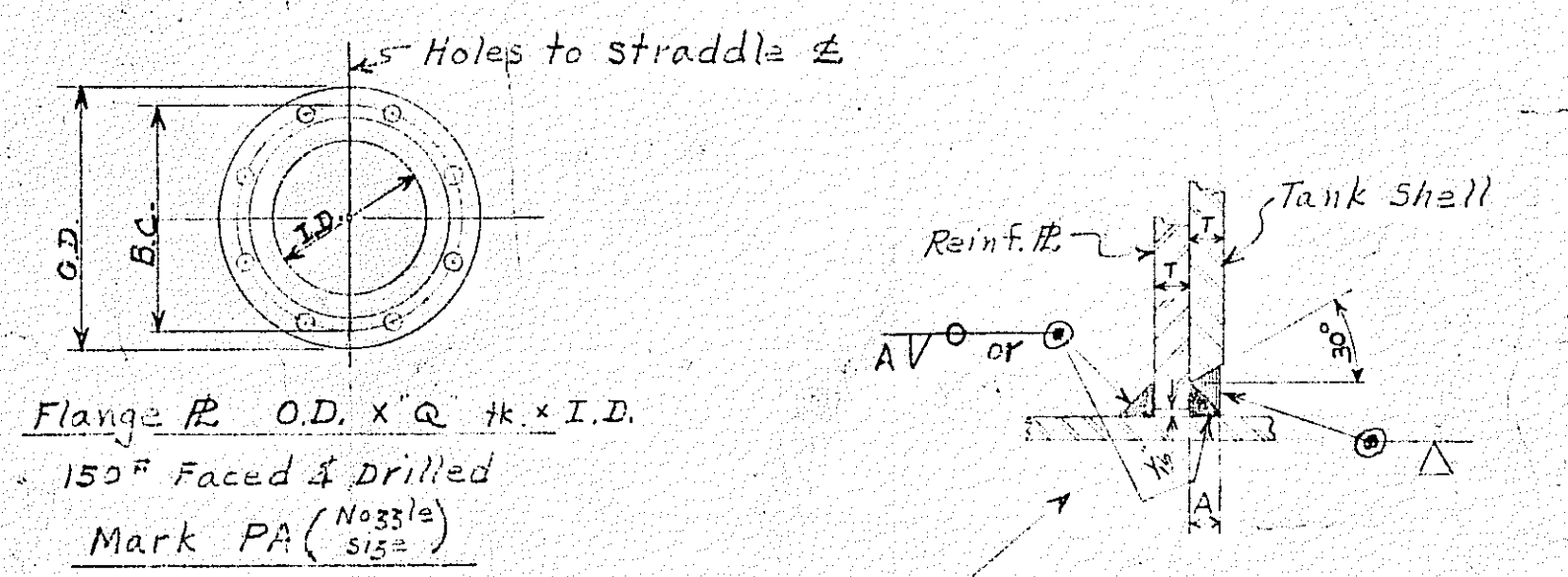


SIZE NOZZLE	O.D. PIPE	L	J	K	H	WALL TH. n	W	KIND OF PIPE	PIPE LENGTH	FIG. #	FIG. # TR. Q	B.C.	A2 SIZE HOLES	I.D.
4	4 1/2	1'-0"	4	3	9	1/2	1'-3 1/2"	Ex. Hy.	0'-6 1/2"	7	1"	7 1/2"	8- 3/4"	4 3/8"
6	6 3/8	1'-4 1/2"	8	6	11"	1/2	1'-8 1/2"	Ex. Hy.	1'-1 1/2"	11"	1 1/2"	9 1/2"	8- 1/2"	6 3/4"
8	8 5/8	1'-8 1/2"	8	6	1'-1"	1/2	2'-1"	Ex. Hy.	1'-1 1/2"	13 1/2"	1 3/4"	11 1/2"	8- 7/8"	8 1/2"
10	10 3/4	2'-0 1/2"	10	8	1'-3"	1/2	2'-6 3/8"	Ex. Hy.	1'-5 1/4"	16"	1 3/4"	14 1/4"	12- 1"	10 3/8"
12	12 1/4	2'-4 1/2"	10	8	1'-5"	1/2	2'-11"	Ex. Hy.	1'-5 1/4"	19"	1 3/4"	17"	12- 1 1/4"	12 1/2"
14	14	2'-7"	10	8	1'-6"	1/2	3'-2"	Std.	1'-5 1/4"	21"	1 3/4"	18 3/4"	12- 1 1/2"	14 1/8"
16	16	2'-11"	10	8	1'-8"	1/2	3'-6 3/8"	Std.	1'-5 1/4"	23 1/2"	1 3/4"	21 1/4"	16- 1 3/8"	16 1/4"
18	18	3'-3"	10	8	1'-10"	1/2	3'-11 3/8"	Std.	1'-5 1/4"	25"	1 3/4"	22 3/4"	16- 1 1/2"	18 1/4"
20	20	3'-7"	10	8	2'-0"	1/2	4'-4 1/2"	Std.	1'-5 1/4"	27 1/2"	1 3/4"	25"	20- 1 1/4"	20 3/8"

WELDING DATA		
SHELL THICKNESS	SHELL CUT-OUT "G"	FILLET WELD "A"
3/16	Pipe O.D. plus 1/2"	1/4"
1/4	do	1/4"
5/16	do	1/4"
3/8	Pipe O.D. plus 5/8"	3/16"
1/2	do	3/16"
5/8	Pipe O.D. plus 3/4"	3/8"
3/4	do	3/8"
7/8	Pipe O.D. plus 7/8"	1/2"
1 1/8	do	1/2"
1 1/4	Pipe O.D. plus 1"	5/8"
1 1/2	do	5/8"

TYPICAL BILLING OF TYPE "A"			
SP	MARK	AP	DESCRIPTION
1	NA6		6" Shell Nozzle
			1 R. 6" Shell Pipe TOE 1 1/4"
			1 Fl. 6" OD x 1 1/2" x 6 3/4" I.D.
			150" Shell 5/8" 8-Holes on 14 1/2"
			1 R. 6" Shell Pipe TOE 1 1/4"
			1 R. 6" Shell Pipe TOE 1 1/4"
			1 Fl. 6" OD x 1 1/2" x 6 3/4" I.D.
			150" Shell 5/8" 8-Holes on 14 1/2"

TYPICAL BILLING OF TYPE "B"			
SP	MARK	AP	DESCRIPTION
1	NE10		10" Shell Nozzle
			1 R. 10" Shell Pipe TOE 1 5/8"
			1 Fl. 10" OD x 1 1/2" x 10" I.D.
			150" Shell 1/2" 12-Holes on 14 1/2"
			1 R. 10" Shell Pipe TOE 1 5/8"
			1 R. 10" Shell Pipe TOE 1 5/8"
			1 Fl. 10" OD x 1 1/2" x 10" I.D.
			150" Shell 1/2" 12-Holes on 14 1/2"



Nozzles good for shells 1" thick maximum  
Unless otherwise specified plate ring flanges will be furnished. - See Bills  
16407-29008 sh 36

PRINTS	CHICAGO
SENT	GREENVILLE
TO:	BIRMINGHAM
	FORT ERIE

KEY TO WELD SYMBOLS		
NEAR SIDE	FAR SIDE	BOTH SIDES
WELD ALL AROUND SIZE OF FILLET REINFORCED FAR SIDE FIELD WELD BACKING BAR	LENGTH OF INCREMENTS PITCH OF INCREMENTS FIELD WELD ALL AROUND INCLUDED ANGLE REINFORCED NEAR SIDE	PITCH OF INCREMENTS OFFSET STAGGERED PITCH DEPTH OF GROOVE
WELDS ON BOTH SIDES ARE SAME UNLESS OTHERWISE SHOWN IN JOINTS IN WHICH ONE MEMBER ONLY IS TO BE GROOVED THE ARROW POINTS TO THAT MEMBER		

REVISIONS		
NO.	DATE	REMARKS
3	5-6-42	NLS Redrawn & General

CHICAGO BRIDGE & IRON COMPANY  
CHICAGO, ILL. - GREENVILLE, PA. - BIRMINGHAM, ALA.  
SHELL NOZZLES  
TWO TYPES  
A.P.I.  
DRAWN BY NLS DATE 3-6-42 INDEX NO.  
TRACED BY DATE 3-11-42  
CHECKED BY SHEET 0 OF 0 API-N

PURCHASER'S ORDER NO.  
PURCHASER'S REQUISITION NO.

PLANS MADE AT GREENVILLE