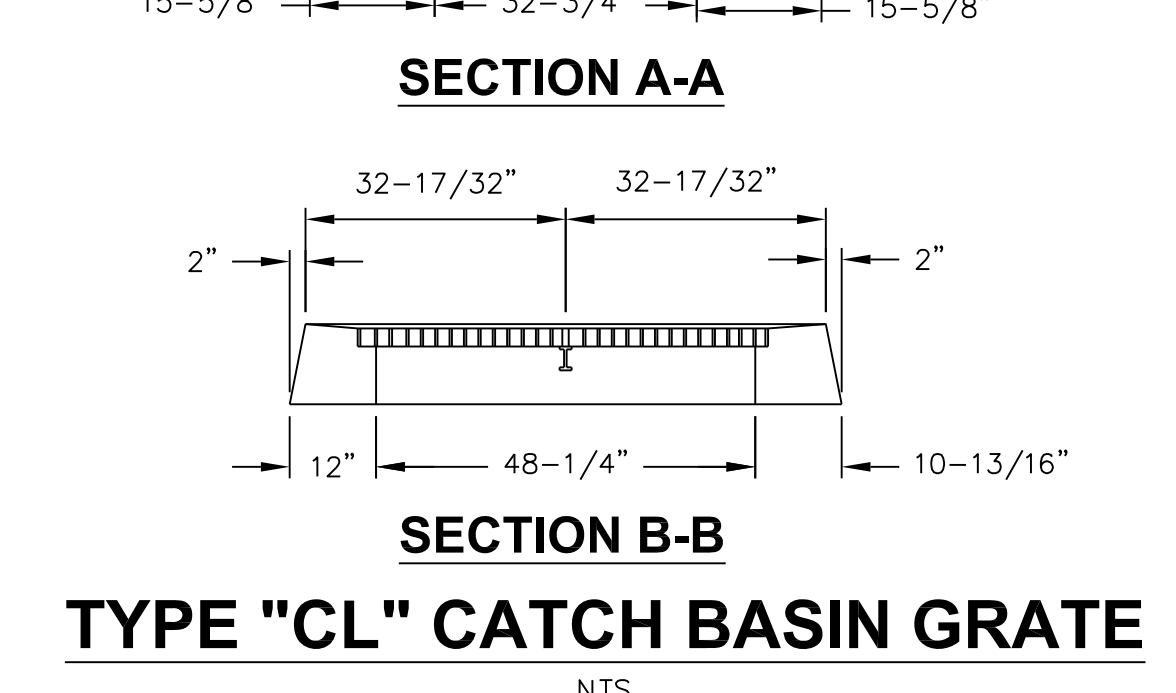
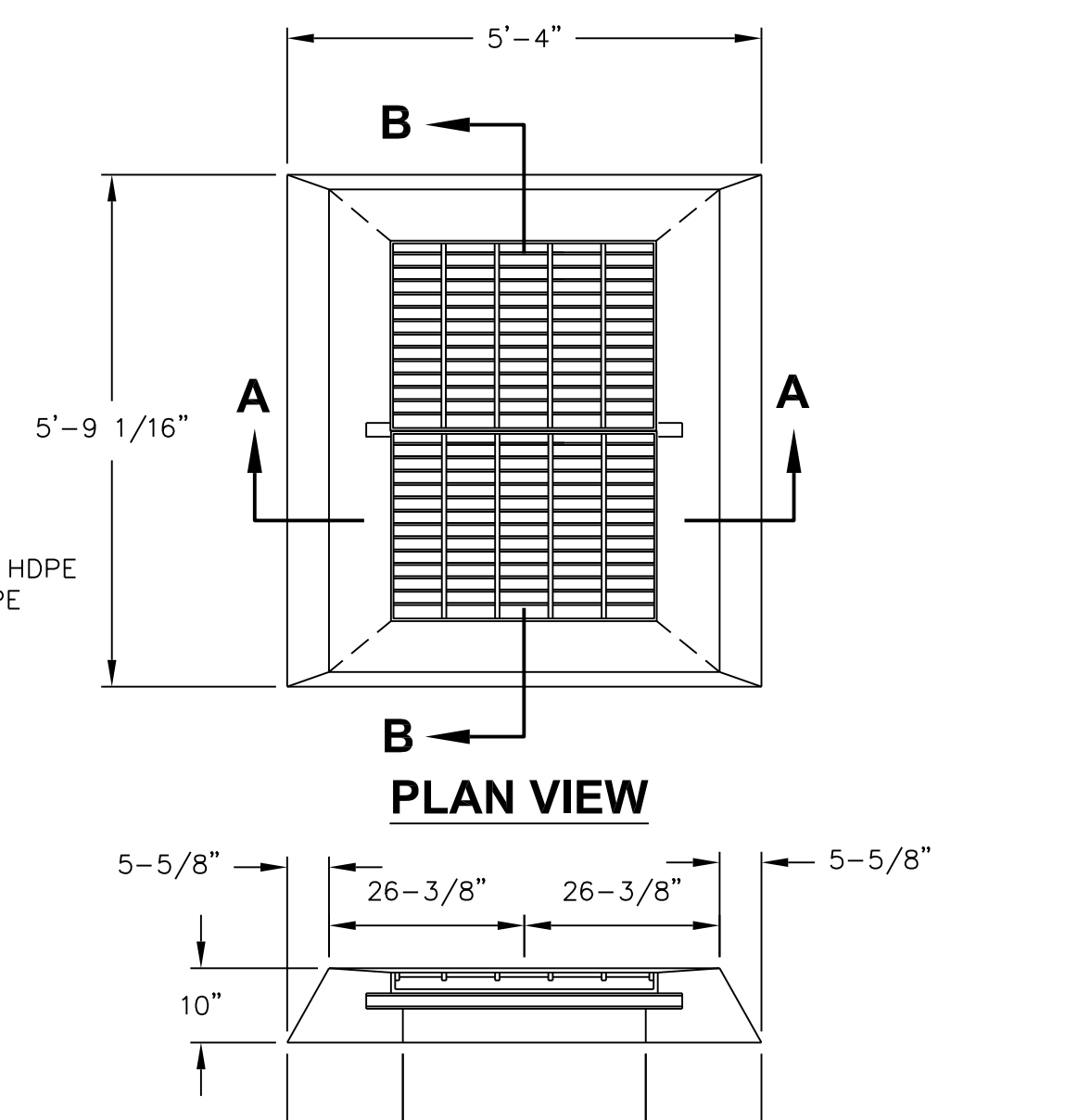


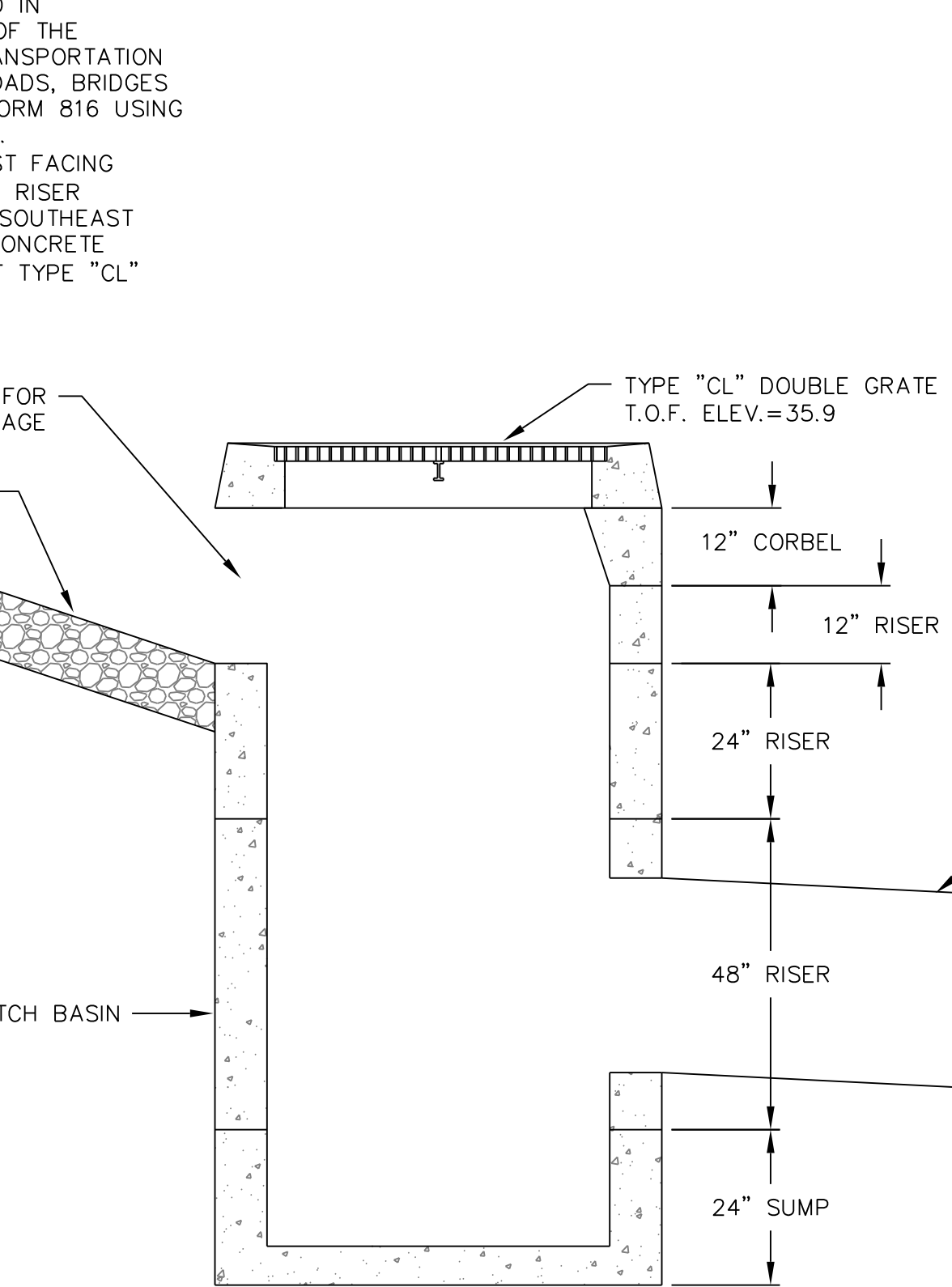
DOWNCHUTE-SWALE-CATCH BASIN-DRAINAGE PIPE CONNECTION DETAIL

NTS

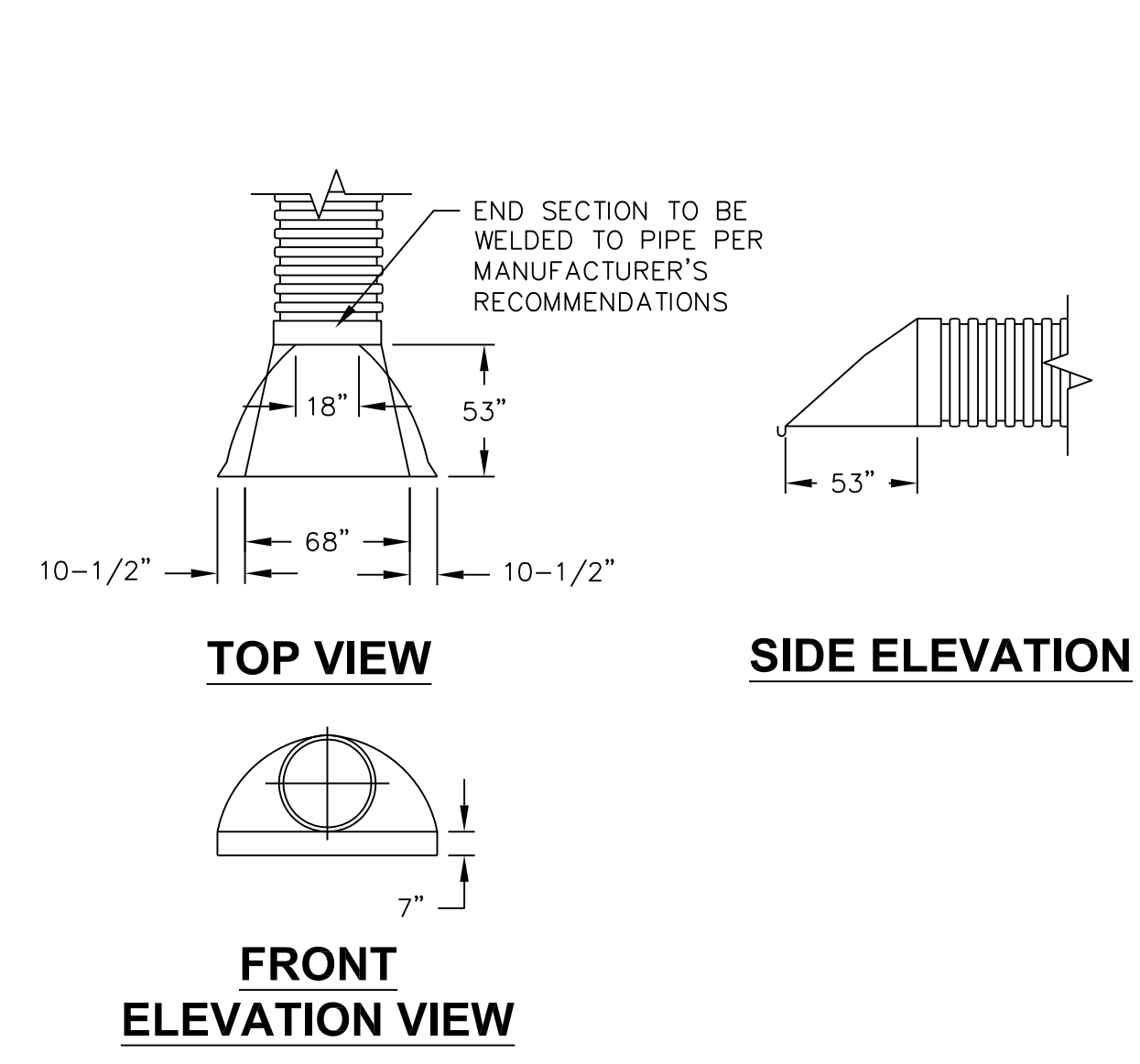


TYPE "CL" CATCH BASIN GRATE

NTS

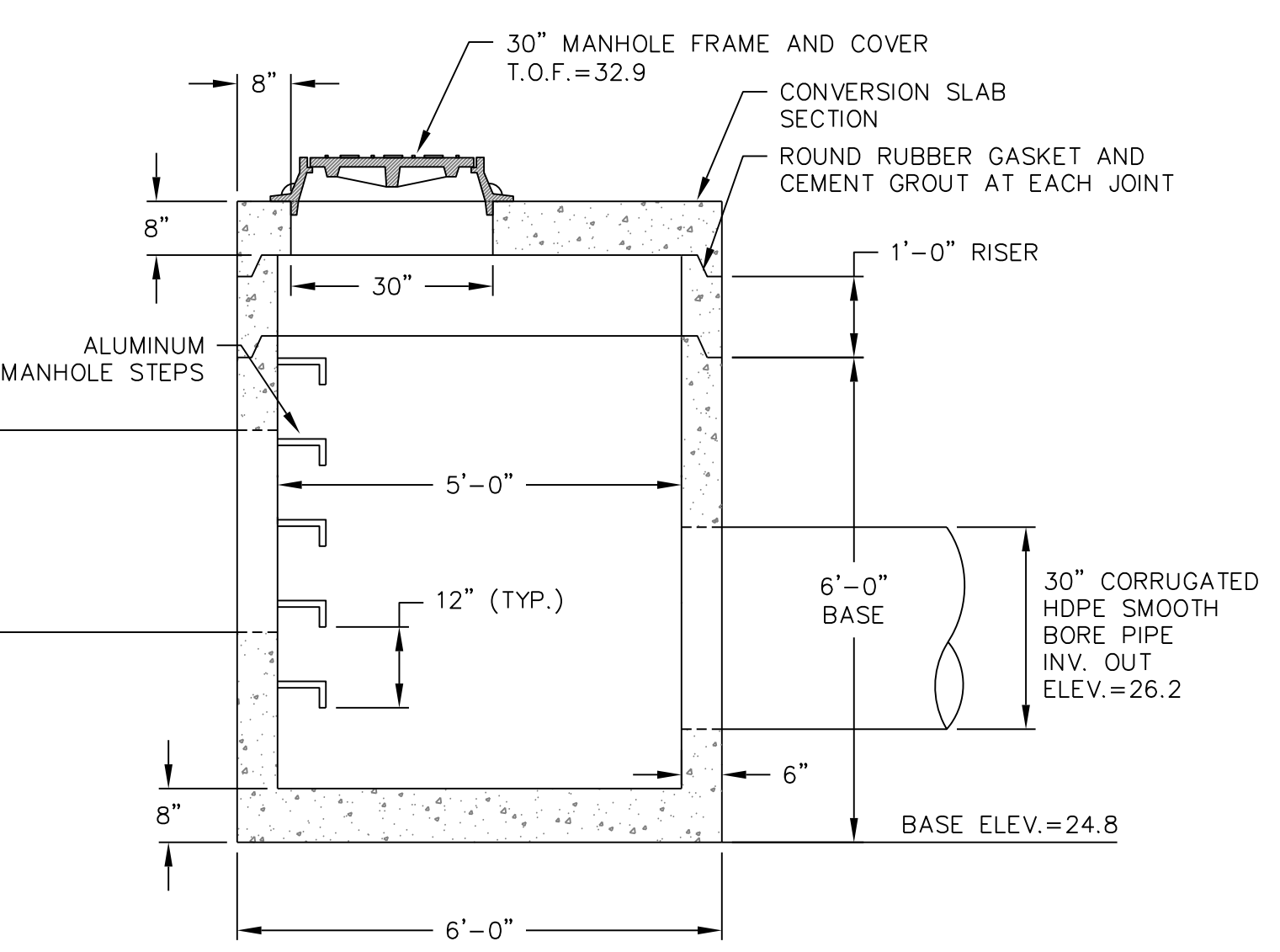


SECTION A-A'



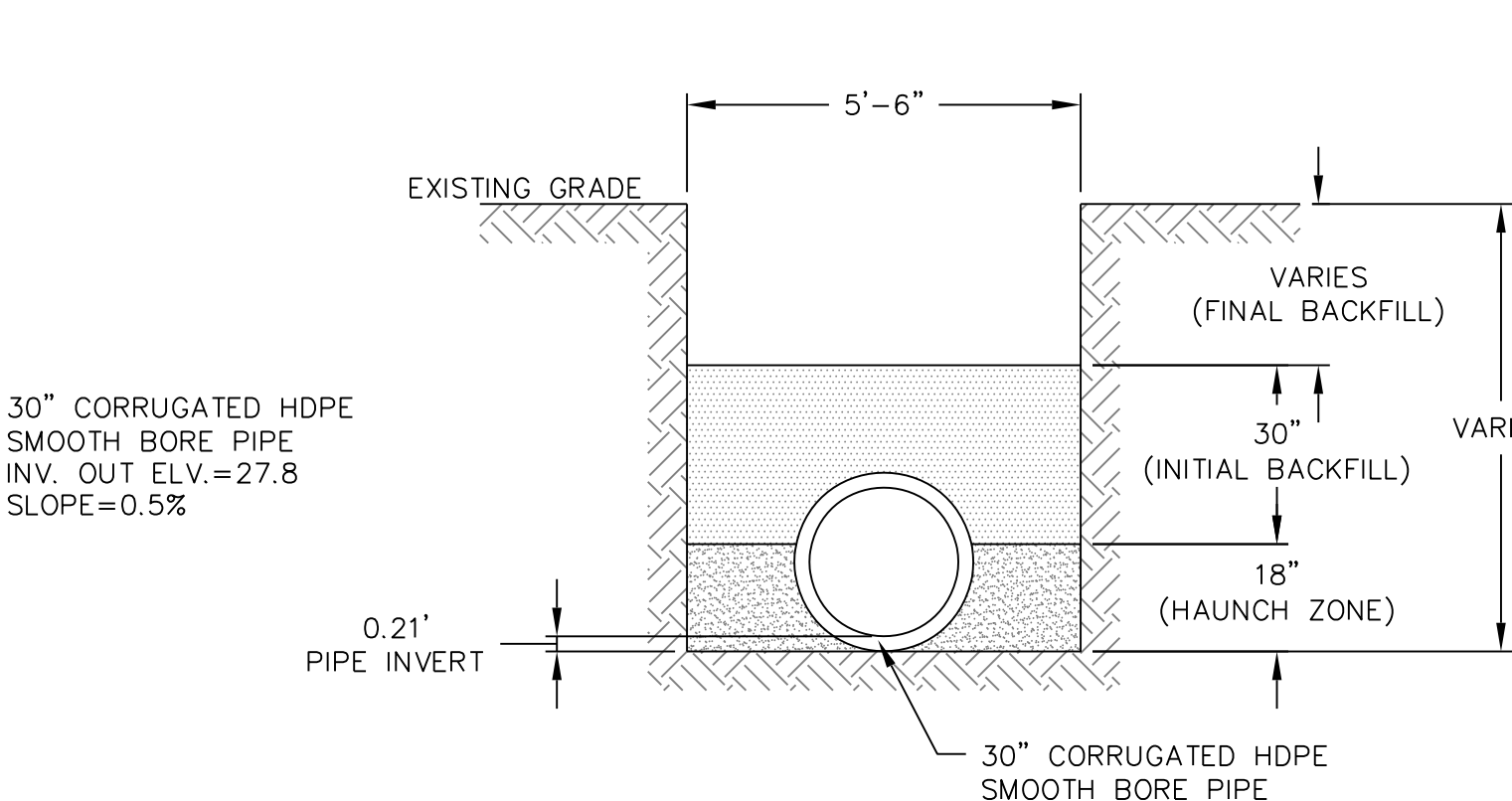
FLARED HDPE END SECTIONS (FES)

NTS



60" DIAMETER MANHOLE

NTS

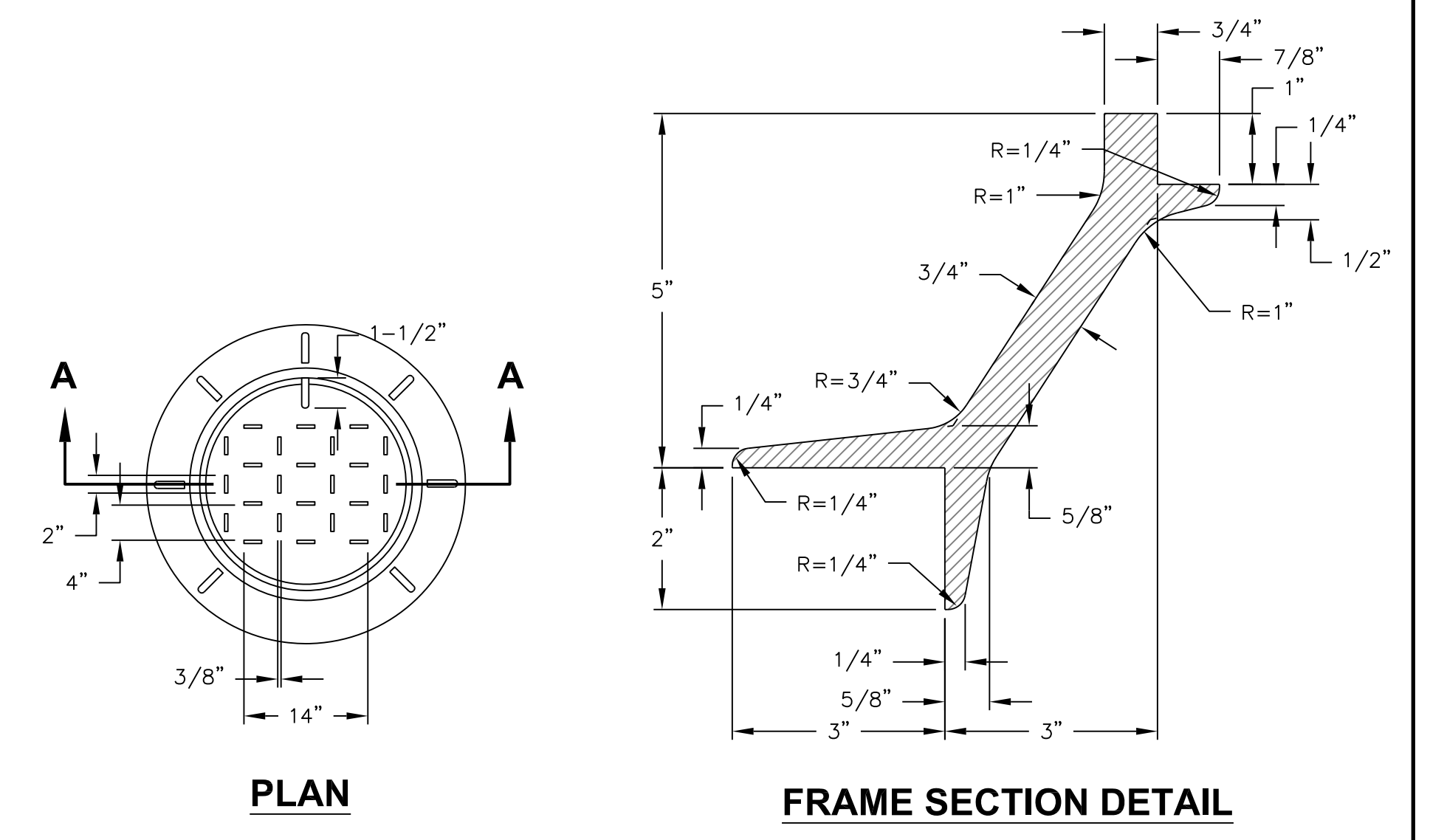


30" CORRUGATED HDPE SMOOTH BORE PIPE INSTALLATION

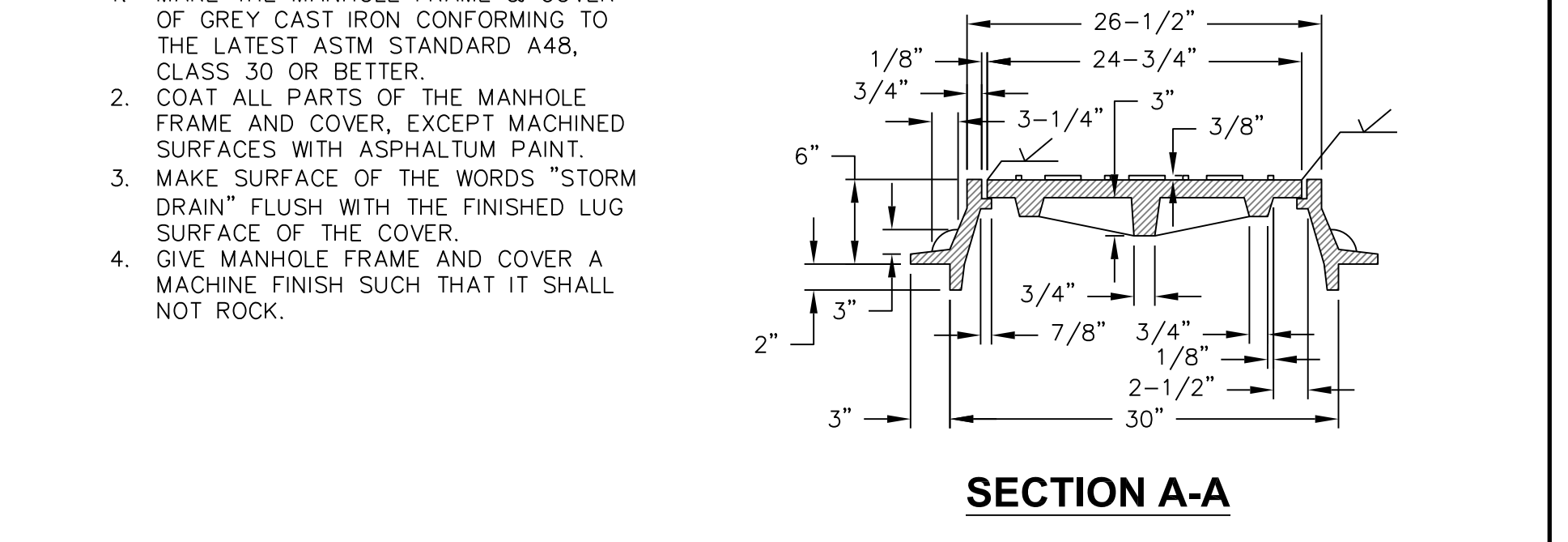
NTS

NOTES:

- 1) COMPACT BASE OF TRENCH TO PROVIDE STABLE UNIFORM BEDDING. REMOVE ROCKS OR DEBRIS. DO NOT COMPACT MIDDLE 12 INCHES OF TRENCH, LEAVE THIS SECTION LOOSE, UNIFORM, AND FREE OF DEBRIS FOR PLACING PIPE.
- 2) ALL BACKFILL LIFTS SHALL BE A MAXIMUM 9 INCHES LOOSE AND THEN COMPACTED.
- 3) COMPLETE SURFACE GRADE TO PREVIOUSLY EXISTING CONDITIONS.
- 4) SAW-CUT ASPHALT PRIOR TO EXCAVATING TRENCHES WITHIN PAVED ROADWAY.

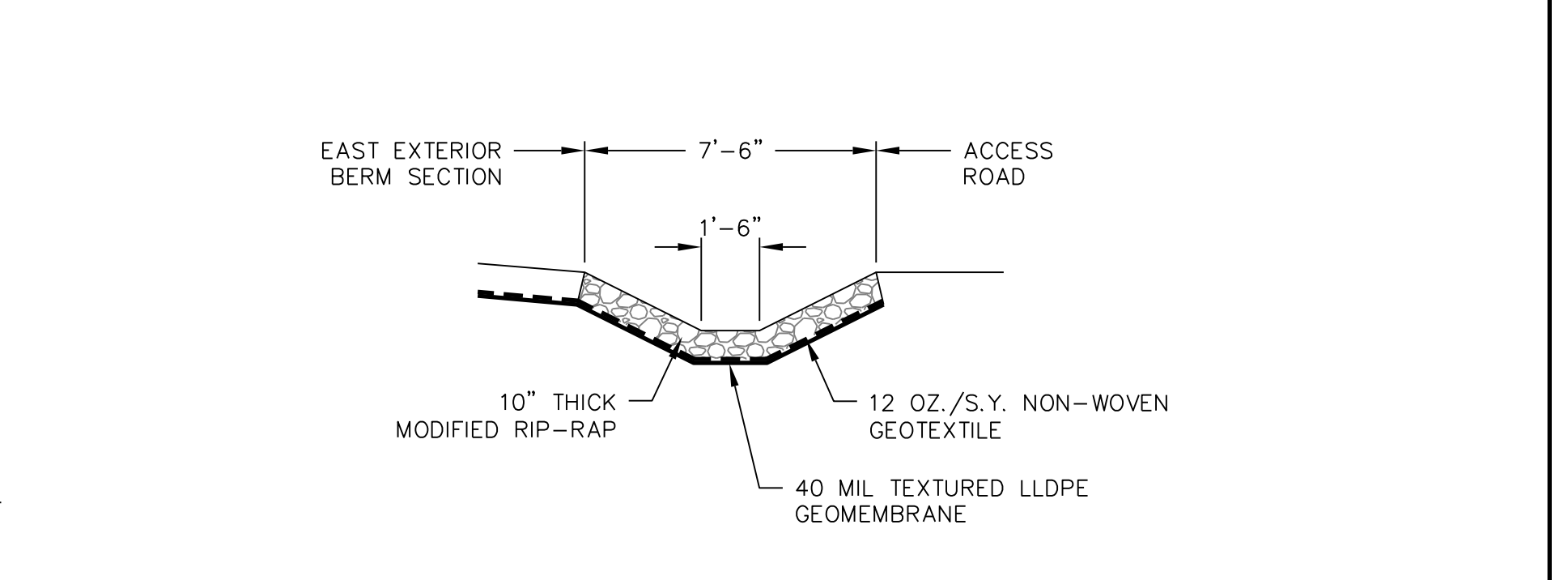


FRAME SECTION DETAIL



30" MANHOLE FRAME AND COVER

NTS



EAST PERIMETER DRAINAGE SWALE RECONSTRUCTION DETAIL

NTS

NOTES:

- 1) REMOVE MATERIAL THAT HAS COLLECTED WITHIN SWALE LOCATION. REUSE RIP-RAP WHEREVER POSSIBLE.
- 2) CONTRACTOR WILL BE RESPONSIBLE FOR THE DISPOSAL OF PIPE SECTIONS TO BE REMOVED.

| REVISIONS | | DATE | APPROVAL |
|--|--|------|---|
| NO. | | | |
| CONNECTICUT RESOURCES RECOVERY AUTHORITY HARTFORD LANDFILL HARTFORD, CONNECTICUT | | | <p>21 Griffin Road North Windsor, CT 06095 (860) 298-9692</p> |
| HARTFORD LANDFILL PHASE I ASH AREA FINAL CLOSURE | | | |
| DESIGN: MAB 03/02/09 | | | |
| DRAWN: KDH 03/02/09 | | | |
| CHECKED: CNS 03/02/09 | | | |
| SCALE: NTS | | | |
| PROJECT: 153306-000260-000006 | | | |
| DRAWING | | | |

DATE _____

CARL N. STOPPER
PROFESSIONAL ENGINEER
CT PE # 13256