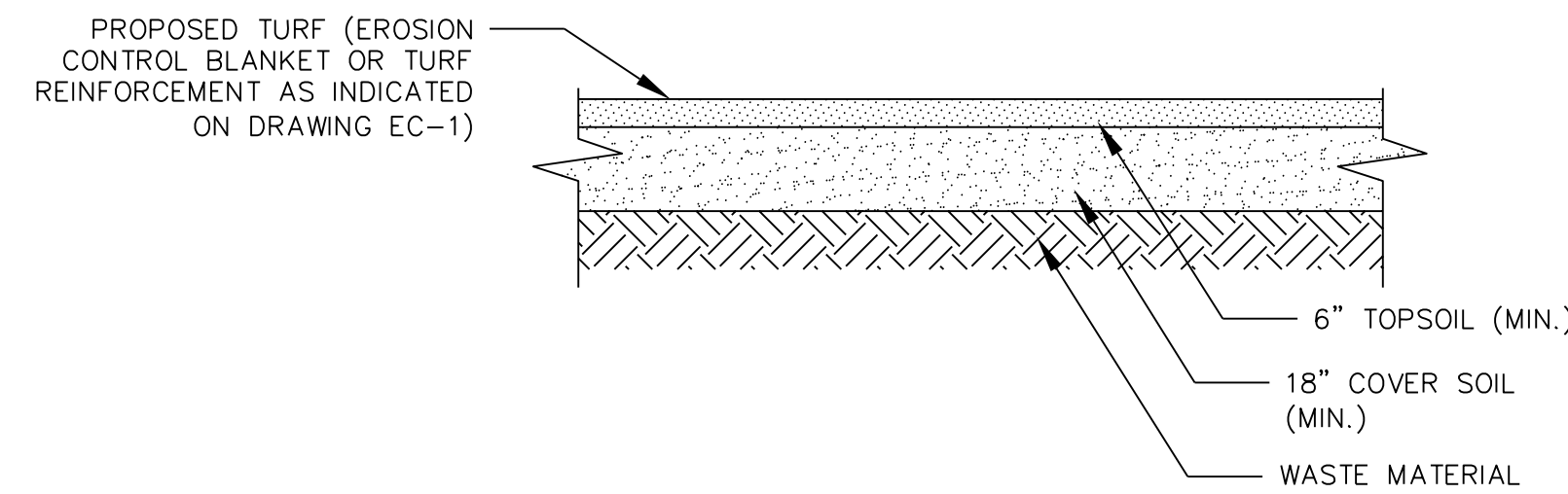
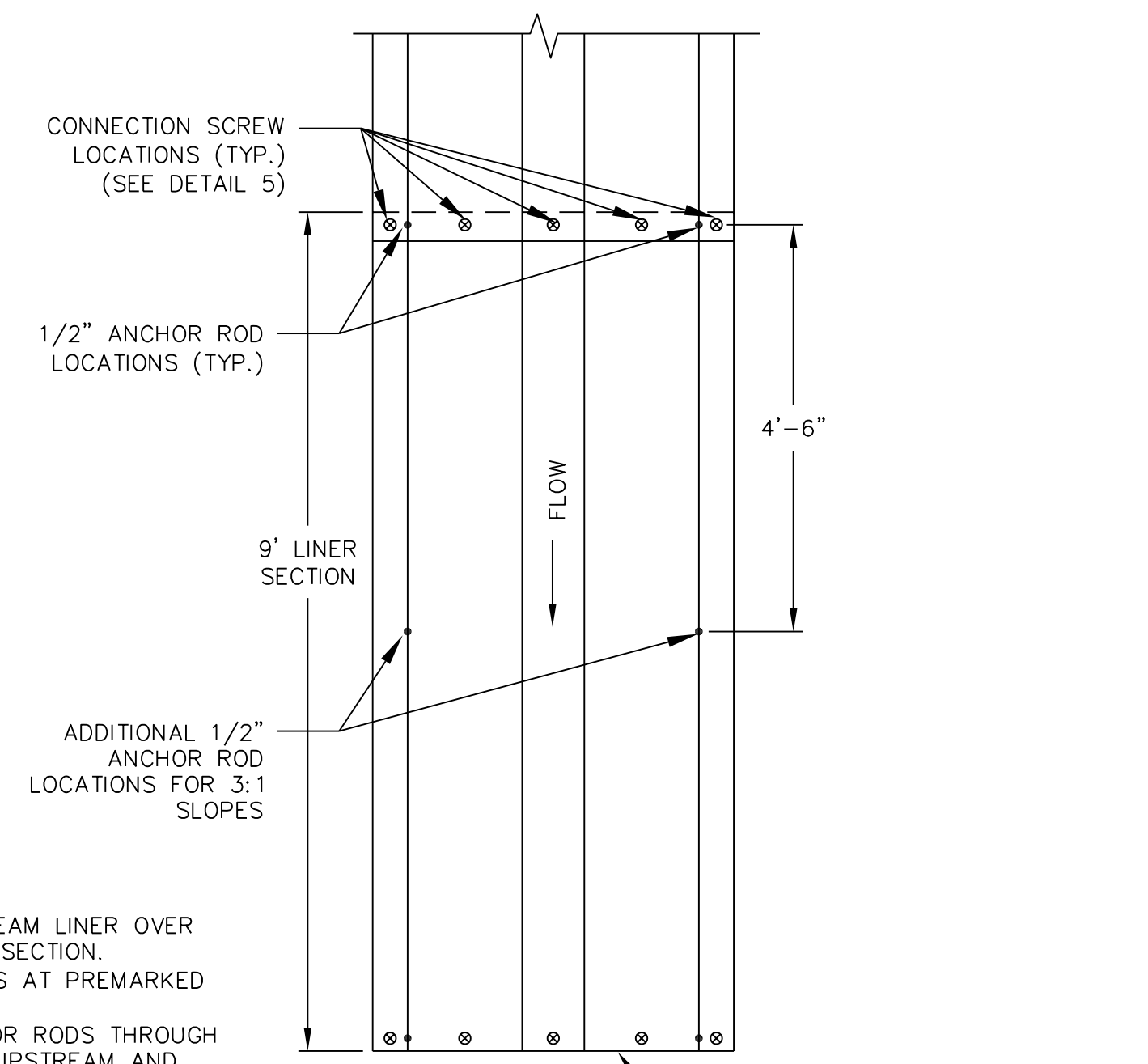


- NOTES:
- 1) ESTABLISH TURF WITHIN SWALE USING FLEXIBLE GROWTH MEDIA (FGM) (FLEX TERRA OR EQUIVALENT).
 - 2) LINE SWALE WITH JUTE NETTING AFTER APPLYING FGM.

1 GRASS LINED DRAINAGE SWALE
N.T.S.



2 TYPICAL COVER (CAP) SECTION
N.T.S.

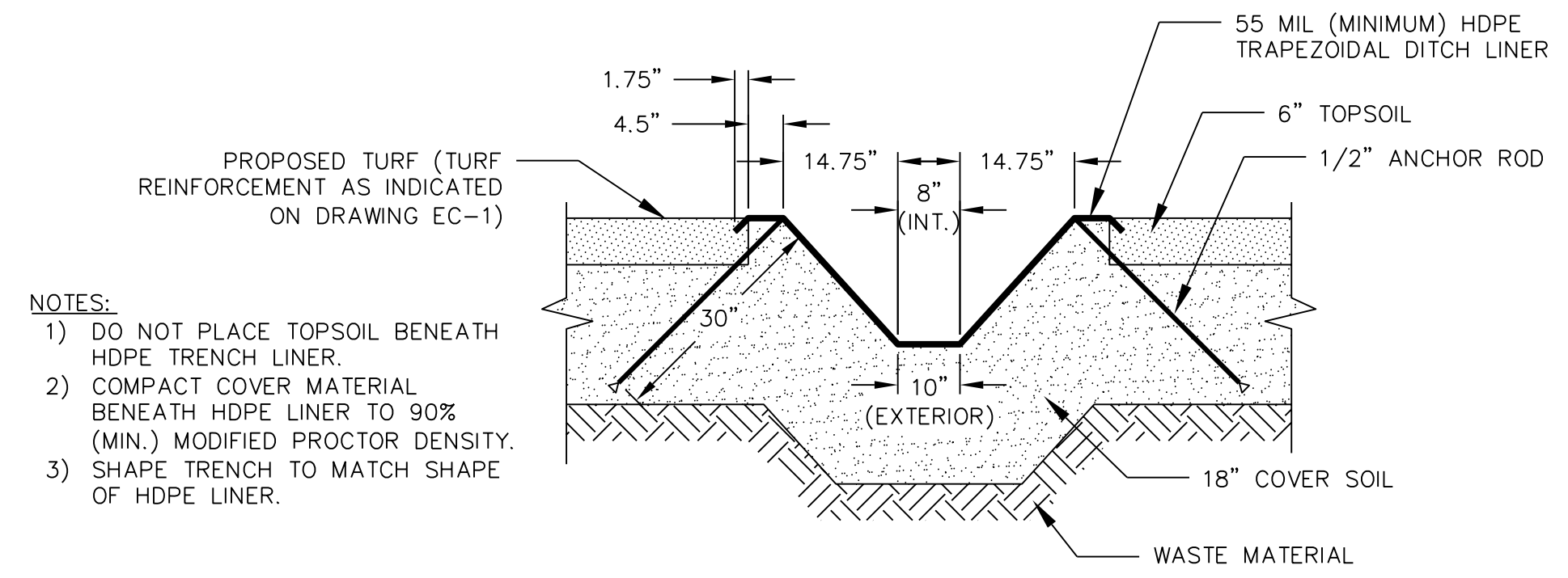


- NOTES:
- 1) PLACE UPSTREAM LINER OVER DOWNSTREAM SECTION.
 - 2) INSTALL BOLTS AT PREMARKED LOCATIONS.
 - 3) INSTAL ANCHOR RODS THROUGH OVERLAP OF UPSTREAM AND DOWNSTREAM SECTIONS AT LOCATIONS SHOWN.
 - 4) FOR 3:1 SLOPES, INSTALL ADDITIONAL ANCHOR RODS AT LOCATION INDICATED.

PLAN VIEW

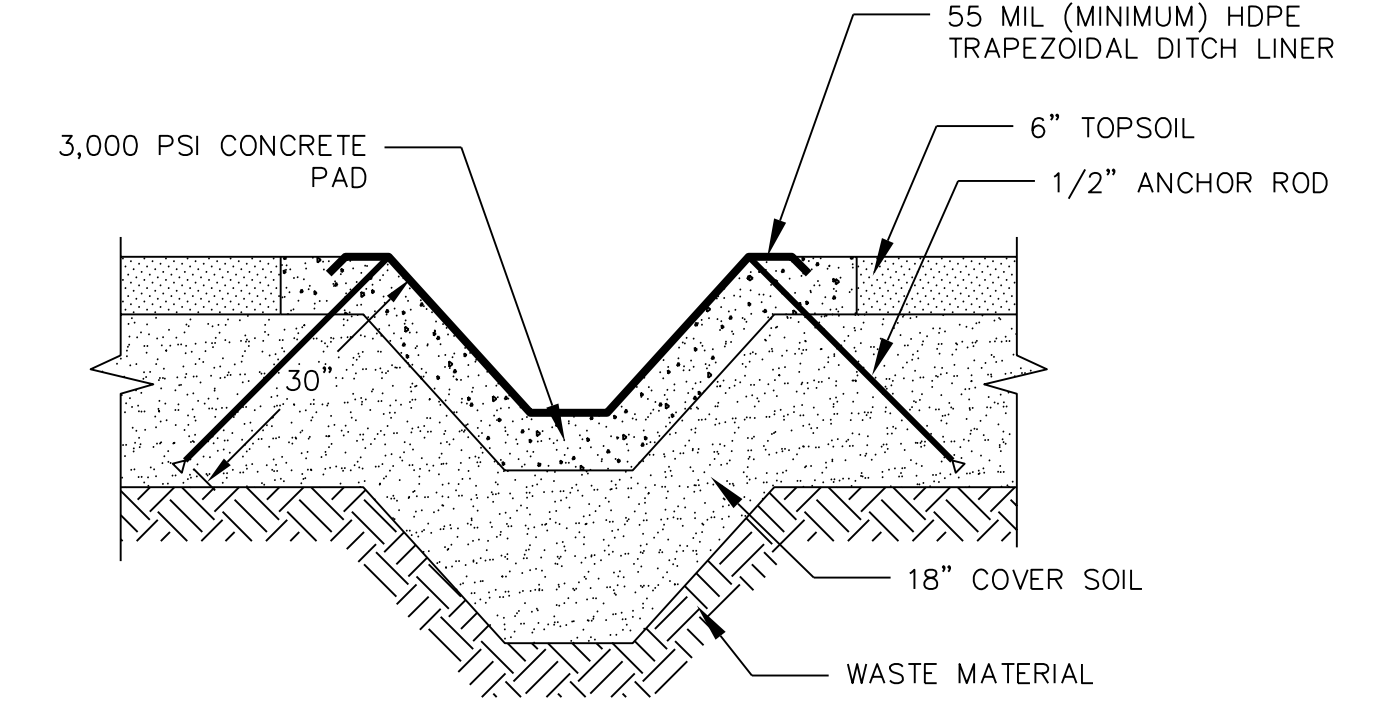
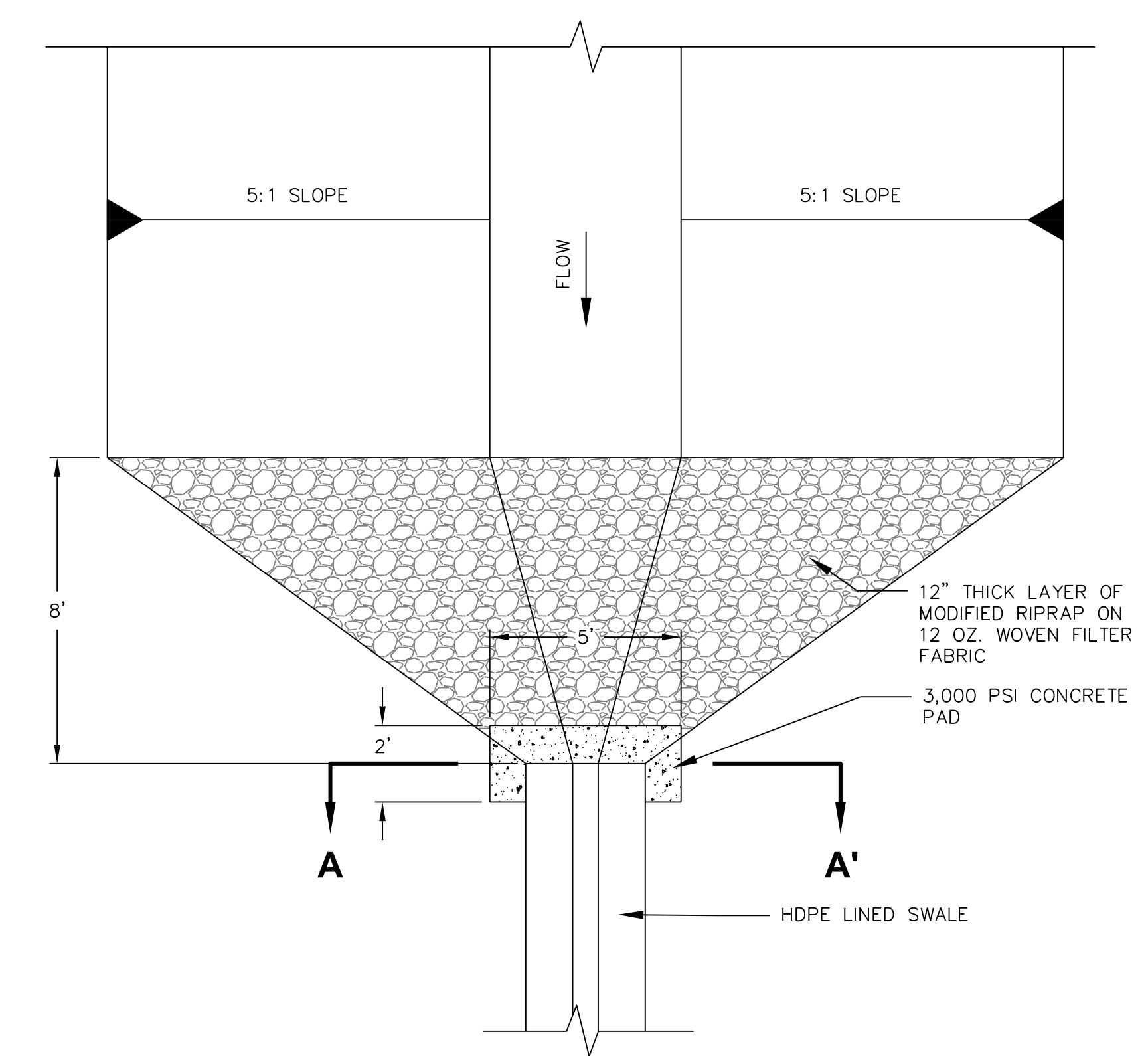
SECTION VIEW

3 HDPE-LINED TRAPEZODAL DOWNCHUTE CONNECTION AND ANCHOR DETAIL
N.T.S.



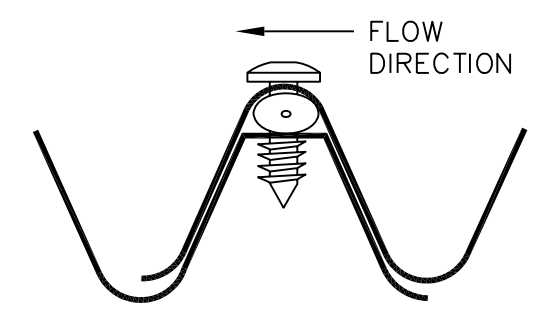
- NOTES:
- 1) DO NOT PLACE TOPSOIL BENEATH HDPE TRENCH LINER.
 - 2) COMPACT COVER MATERIAL BENEATH HDPE LINER TO 90% (MIN.) MODIFIED PROCTOR DENSITY.
 - 3) SHAPE TRENCH TO MATCH SHAPE OF HDPE LINER.

4 HDPE-LINED TRAPEZODAL DOWNCHUTE ON FINAL COVER
N.T.S.



SECTION A-A'
6 GRASS-LINED SWALE INTO HDPE LINED SWALE CONNECTION DETAIL
N.T.S.

- NOTES:
- 1) FIVE PREMARKED BOLT LOCATIONS FOR EACH CONNECTION POINT.
 - 2) WHEN CONNECTING INDIVIDUAL SECTIONS, UPSTREAM SECTIONS OVERLAP DOWNSTREAM SECTIONS.
 - 3) INSTALL SEAL UNDERNEATH ROUND CORRUGATION ON THE DOWNSTREAM SECTION.
 - 4) OVERLAP WITH DOWNSTREAM SECTION, DRILL 1/4" HOLE THROUGH BOTH CHANNELS, INSTALL SCREW.



5 HDPE SWALE LINER CONNECTION DETAIL
N.T.S.

| NO. | REVISIONS | DATE | APPROVAL |
|--|----------------------|----------|----------|
| CONNECTICUT RESOURCE RECOVERY AUTHORITY WATERBURY LANDFILL HIGHLAND AVENUE & HIGHVIEW STREET WATERBURY, CONNECTICUT | | | |
| DETAILS | | | |
| DESIGN: | MB | 10/15/07 | |
| DRAWN: | KDH | 10/15/07 | |
| CHECKED: | CNS | 10/15/07 | |
| SCALE: | NTS | | |
| PROJECT: | 106811-000140-000000 | | |
| DRAWING: | | | |

