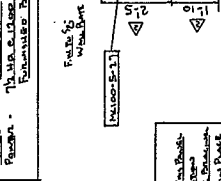


**LIST OF COMPONENTS**

NO.	DESCRIPTION	QUANTITY	UNIT
1	...	...	...
2	...	...	...
3	...	...	...
4	...	...	...
5	...	...	...

CONCRETE SPECIFICATIONS  
 ONE 12" WIDE STRIP PER SPAN AT MIDSPAN AND AT  
 QUARTERS SPAN.

CAPACITY  
 GENERAL DESIGN - 100% (AS PER)  
 REQUIREMENTS - 100% (AS PER)  
 5 TO 25 PER CENT (AS PER)  
 PERMIT - 100% (AS PER)  
 EXCEPT AS NOTED



SECTION E-E'  
 (Scale 1/4" = 1'-0")

SECTION E-E'  
 (Scale 1/4" = 1'-0")

SECTION E-E'  
 (Scale 1/4" = 1'-0")

SECTION E-E'  
 (Scale 1/4" = 1'-0")

SECTION E-E'  
 (Scale 1/4" = 1'-0")

SECTION E-E'  
 (Scale 1/4" = 1'-0")

SECTION E-E'  
 (Scale 1/4" = 1'-0")

SECTION E-E'  
 (Scale 1/4" = 1'-0")

SECTION E-E'  
 (Scale 1/4" = 1'-0")

SECTION E-E'  
 (Scale 1/4" = 1'-0")

SECTION E-E'  
 (Scale 1/4" = 1'-0")

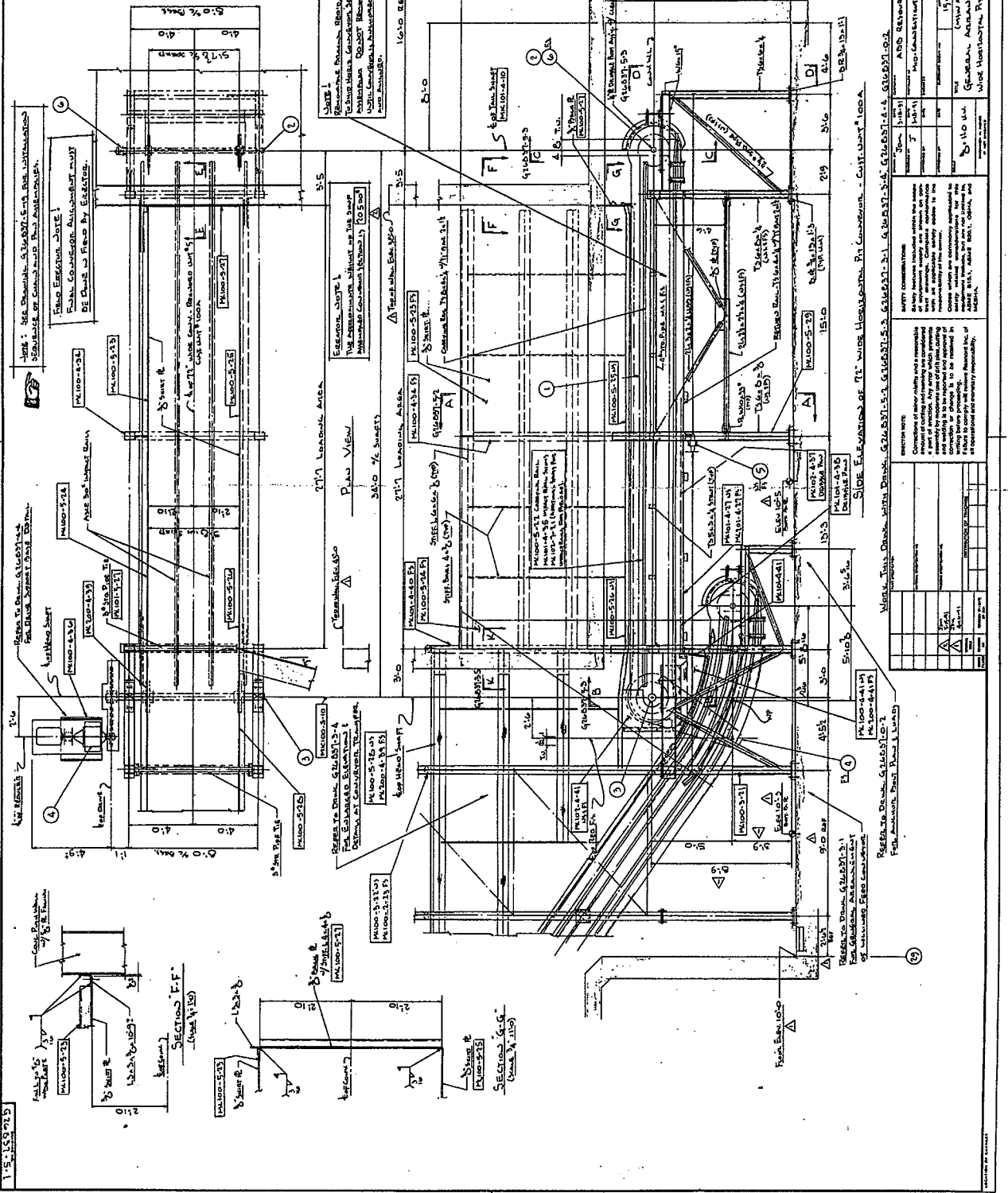
SECTION E-E'  
 (Scale 1/4" = 1'-0")

SECTION E-E'  
 (Scale 1/4" = 1'-0")

SECTION E-E'  
 (Scale 1/4" = 1'-0")

SECTION E-E'  
 (Scale 1/4" = 1'-0")

SECTION E-E'  
 (Scale 1/4" = 1'-0")



1-5-1953

SECTION F-F'  
 (Scale 1/4" = 1'-0")

SECTION F-F'  
 (Scale 1/4" = 1'-0")

SECTION F-F'  
 (Scale 1/4" = 1'-0")

SECTION F-F'  
 (Scale 1/4" = 1'-0")

SECTION F-F'  
 (Scale 1/4" = 1'-0")

SECTION F-F'  
 (Scale 1/4" = 1'-0")

SECTION F-F'  
 (Scale 1/4" = 1'-0")

SECTION F-F'  
 (Scale 1/4" = 1'-0")

SECTION F-F'  
 (Scale 1/4" = 1'-0")

SECTION F-F'  
 (Scale 1/4" = 1'-0")

SECTION F-F'  
 (Scale 1/4" = 1'-0")

SECTION F-F'  
 (Scale 1/4" = 1'-0")

SECTION F-F'  
 (Scale 1/4" = 1'-0")

SECTION F-F'  
 (Scale 1/4" = 1'-0")

SECTION F-F'  
 (Scale 1/4" = 1'-0")

SECTION F-F'  
 (Scale 1/4" = 1'-0")

SECTION F-F'  
 (Scale 1/4" = 1'-0")

SECTION F-F'  
 (Scale 1/4" = 1'-0")

SECTION F-F'  
 (Scale 1/4" = 1'-0")

SECTION F-F'  
 (Scale 1/4" = 1'-0")

SECTION F-F'  
 (Scale 1/4" = 1'-0")

SECTION F-F'  
 (Scale 1/4" = 1'-0")

SECTION F-F'  
 (Scale 1/4" = 1'-0")

SECTION F-F'  
 (Scale 1/4" = 1'-0")

SECTION F-F'  
 (Scale 1/4" = 1'-0")

SECTION F-F'  
 (Scale 1/4" = 1'-0")

NO.	DESCRIPTION	QUANTITY	UNIT
1	...	...	...
2	...	...	...
3	...	...	...
4	...	...	...
5	...	...	...

REVISIONS

NO.	DATE	DESCRIPTION
1	...	...
2	...	...

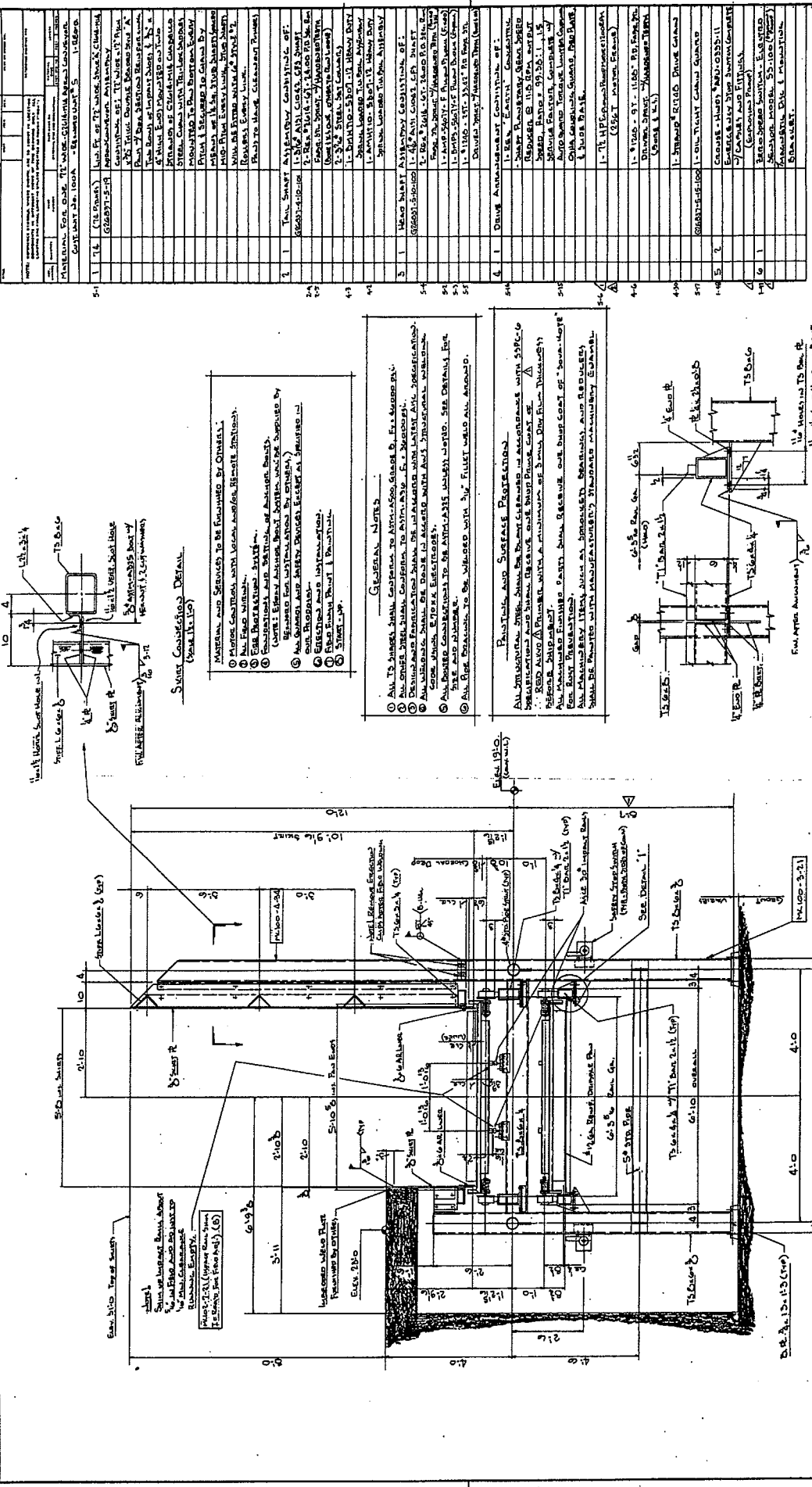
CONFIDENTIAL - ALL RIGHTS RESERVED

**Remond Inc.**

GENERAL ADMINISTRATOR OF THE  
 WIDE HORIZONTAL PILE CAP - CONSTRUCTION

916-057

3 - 2 - 109715



LIST OF COMPONENTS		
NO.	DESCRIPTION	REMARKS
1	1 TAIL SHEET ATTACHMENT CONSTRUCTION OF: 1. 1/8" A307 COILS, 4" x 8" (SEE DRAWING FOR DETAILS)	
2	2 REAR DRIVE SHAFT 1. 1/2" DIA. X 12" L. (SEE DRAWING FOR DETAILS)	
3	3 HEAD SHEET ATTACHMENT CONSTRUCTION OF: 1. 1/8" A307 COILS, 4" x 8" (SEE DRAWING FOR DETAILS)	
4	4 DRIVE ANGLE IRON CONSTRUCTION OF: 1. 1/2" x 3" x 1/4" L. (SEE DRAWING FOR DETAILS)	
5	5 HEAD SHEET ATTACHMENT CONSTRUCTION OF: 1. 1/8" A307 COILS, 4" x 8" (SEE DRAWING FOR DETAILS)	
6	6 DRIVE ANGLE IRON CONSTRUCTION OF: 1. 1/2" x 3" x 1/4" L. (SEE DRAWING FOR DETAILS)	
7	7 HEAD SHEET ATTACHMENT CONSTRUCTION OF: 1. 1/8" A307 COILS, 4" x 8" (SEE DRAWING FOR DETAILS)	
8	8 DRIVE ANGLE IRON CONSTRUCTION OF: 1. 1/2" x 3" x 1/4" L. (SEE DRAWING FOR DETAILS)	
9	9 HEAD SHEET ATTACHMENT CONSTRUCTION OF: 1. 1/8" A307 COILS, 4" x 8" (SEE DRAWING FOR DETAILS)	
10	10 DRIVE ANGLE IRON CONSTRUCTION OF: 1. 1/2" x 3" x 1/4" L. (SEE DRAWING FOR DETAILS)	
11	11 HEAD SHEET ATTACHMENT CONSTRUCTION OF: 1. 1/8" A307 COILS, 4" x 8" (SEE DRAWING FOR DETAILS)	
12	12 DRIVE ANGLE IRON CONSTRUCTION OF: 1. 1/2" x 3" x 1/4" L. (SEE DRAWING FOR DETAILS)	
13	13 HEAD SHEET ATTACHMENT CONSTRUCTION OF: 1. 1/8" A307 COILS, 4" x 8" (SEE DRAWING FOR DETAILS)	
14	14 DRIVE ANGLE IRON CONSTRUCTION OF: 1. 1/2" x 3" x 1/4" L. (SEE DRAWING FOR DETAILS)	
15	15 HEAD SHEET ATTACHMENT CONSTRUCTION OF: 1. 1/8" A307 COILS, 4" x 8" (SEE DRAWING FOR DETAILS)	
16	16 DRIVE ANGLE IRON CONSTRUCTION OF: 1. 1/2" x 3" x 1/4" L. (SEE DRAWING FOR DETAILS)	
17	17 HEAD SHEET ATTACHMENT CONSTRUCTION OF: 1. 1/8" A307 COILS, 4" x 8" (SEE DRAWING FOR DETAILS)	
18	18 DRIVE ANGLE IRON CONSTRUCTION OF: 1. 1/2" x 3" x 1/4" L. (SEE DRAWING FOR DETAILS)	
19	19 HEAD SHEET ATTACHMENT CONSTRUCTION OF: 1. 1/8" A307 COILS, 4" x 8" (SEE DRAWING FOR DETAILS)	
20	20 DRIVE ANGLE IRON CONSTRUCTION OF: 1. 1/2" x 3" x 1/4" L. (SEE DRAWING FOR DETAILS)	
21	21 HEAD SHEET ATTACHMENT CONSTRUCTION OF: 1. 1/8" A307 COILS, 4" x 8" (SEE DRAWING FOR DETAILS)	
22	22 DRIVE ANGLE IRON CONSTRUCTION OF: 1. 1/2" x 3" x 1/4" L. (SEE DRAWING FOR DETAILS)	
23	23 HEAD SHEET ATTACHMENT CONSTRUCTION OF: 1. 1/8" A307 COILS, 4" x 8" (SEE DRAWING FOR DETAILS)	
24	24 DRIVE ANGLE IRON CONSTRUCTION OF: 1. 1/2" x 3" x 1/4" L. (SEE DRAWING FOR DETAILS)	
25	25 HEAD SHEET ATTACHMENT CONSTRUCTION OF: 1. 1/8" A307 COILS, 4" x 8" (SEE DRAWING FOR DETAILS)	
26	26 DRIVE ANGLE IRON CONSTRUCTION OF: 1. 1/2" x 3" x 1/4" L. (SEE DRAWING FOR DETAILS)	
27	27 HEAD SHEET ATTACHMENT CONSTRUCTION OF: 1. 1/8" A307 COILS, 4" x 8" (SEE DRAWING FOR DETAILS)	
28	28 DRIVE ANGLE IRON CONSTRUCTION OF: 1. 1/2" x 3" x 1/4" L. (SEE DRAWING FOR DETAILS)	
29	29 HEAD SHEET ATTACHMENT CONSTRUCTION OF: 1. 1/8" A307 COILS, 4" x 8" (SEE DRAWING FOR DETAILS)	
30	30 DRIVE ANGLE IRON CONSTRUCTION OF: 1. 1/2" x 3" x 1/4" L. (SEE DRAWING FOR DETAILS)	

MATERIALS TO BE SUPPLIED BY OTHERS:  
 1. 1/8" A307 COILS, 4" x 8" (SEE DRAWING FOR DETAILS)  
 2. 1/2" x 3" x 1/4" L. (SEE DRAWING FOR DETAILS)

GENERAL NOTES:  
 1. ALL TO BE PERFORMED IN ACCORDANCE WITH THE LATEST EDITIONS OF THE RELEVANT SPECIFICATIONS.  
 2. THE DESIGNER SHALL BE RESPONSIBLE FOR THE DESIGN AND THE MATERIALS TO BE USED.  
 3. THE CONTRACTOR SHALL BE RESPONSIBLE FOR THE INSTALLATION AND THE MAINTENANCE OF THE EQUIPMENT.  
 4. THE CONTRACTOR SHALL BE RESPONSIBLE FOR THE SAFETY OF THE WORKERS AND THE PROTECTION OF THE ENVIRONMENT.  
 5. THE CONTRACTOR SHALL BE RESPONSIBLE FOR THE DELIVERY AND THE INSTALLATION OF THE EQUIPMENT.  
 6. THE CONTRACTOR SHALL BE RESPONSIBLE FOR THE OPERATION AND THE MAINTENANCE OF THE EQUIPMENT.

PULLEY AND SUBSEAL PROVISIONS:  
 ALL DIMENSIONS AND MATERIALS TO BE SUPPLIED BY OTHERS SHALL BE AS SHOWN ON THE DRAWING.  
 THE CONTRACTOR SHALL BE RESPONSIBLE FOR THE INSTALLATION AND THE MAINTENANCE OF THE PULLEY AND SUBSEAL PROVISIONS.  
 THE CONTRACTOR SHALL BE RESPONSIBLE FOR THE SAFETY OF THE WORKERS AND THE PROTECTION OF THE ENVIRONMENT.  
 THE CONTRACTOR SHALL BE RESPONSIBLE FOR THE DELIVERY AND THE INSTALLATION OF THE PULLEY AND SUBSEAL PROVISIONS.

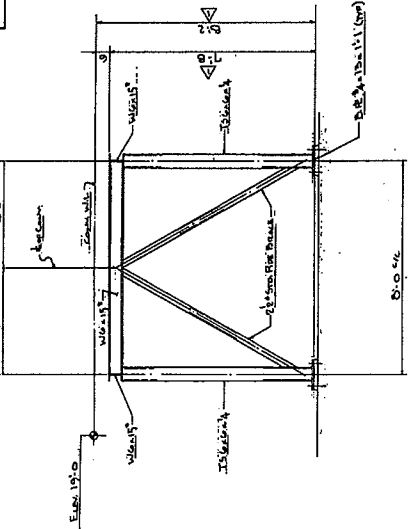
SHAFT CONSTRUCTION DETAIL:  
 MATERIALS AND FINISHES TO BE SUPPLIED BY OTHERS:  
 1. 1/2" DIA. X 12" L. (SEE DRAWING FOR DETAILS)  
 2. 1/8" A307 COILS, 4" x 8" (SEE DRAWING FOR DETAILS)

SHAFT CONSTRUCTION DETAIL (CONTINUED):  
 1. 1/2" DIA. X 12" L. (SEE DRAWING FOR DETAILS)  
 2. 1/8" A307 COILS, 4" x 8" (SEE DRAWING FOR DETAILS)

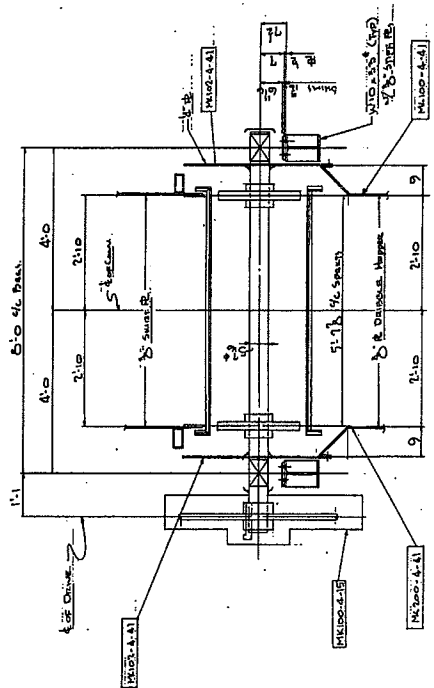
SHAFT CONSTRUCTION DETAIL (CONTINUED):  
 1. 1/2" DIA. X 12" L. (SEE DRAWING FOR DETAILS)  
 2. 1/8" A307 COILS, 4" x 8" (SEE DRAWING FOR DETAILS)

LIST OF COMPONENTS

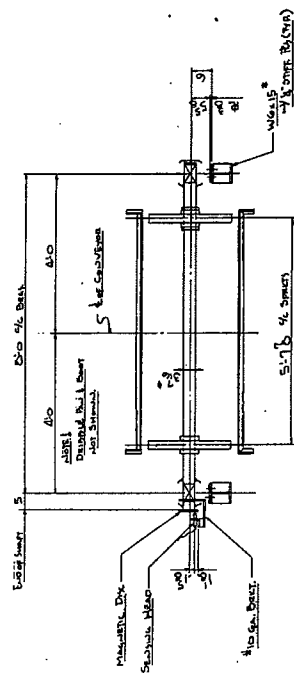
ITEM	DESCRIPTION	QTY	UNIT
1	Structural Steel Frame	1	UNIT
2	Support Brackets	4	PAIRS
3	Truss Members	4	PAIRS
4	Diagonal Braces	4	PAIRS
5	End Plates	4	PAIRS
6	Welds	AS SHOWN	AS SHOWN



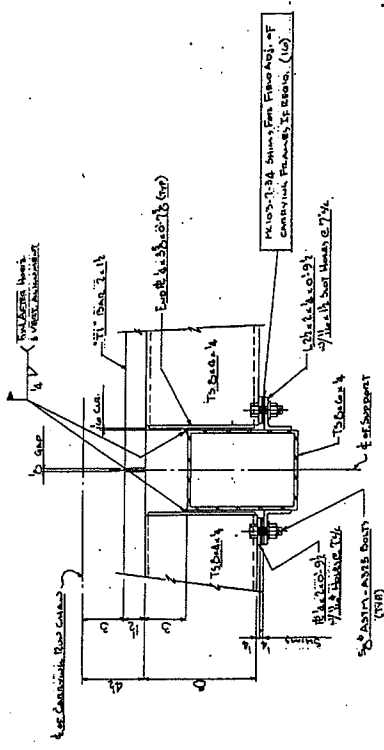
VIEW D-D



SECTION B-B



SECTION C-C



TYPICAL CARBON RAIL FIELD CONNECTION DETAIL

**REXNORD**  
**REXNORD INC.**  
 CONVENTIONAL - ALL RIGHTS RESERVED  
 CONVENTIONAL POWER ROLLER  
 CONVENTIONAL CONNECTION  
 REXNORD  
 916537-4-3

DATE	DESCRIPTION
3/10/81	REVISED TO ADD REXNORD ROLLER SYSTEM
3/10/81	REVISED TO CORRECT CONNECTION DETAIL (1)
3/10/81	REVISED TO CORRECT CONNECTION DETAIL (2)
3/10/81	REVISED TO CORRECT CONNECTION DETAIL (3)
3/10/81	REVISED TO CORRECT CONNECTION DETAIL (4)

WORK THIS DRAWING WITH DRAWING G16537-4-1  
 G16537-4-2

NOTE: THIS DRAWING IS THE PROPERTY OF REXNORD INC. AND IS TO BE USED ONLY FOR THE PROJECT AND LOCATION SPECIFIED ON THE DRAWING. IT IS TO BE RETURNED TO REXNORD INC. UPON COMPLETION OF THE PROJECT. NO PART OF THIS DRAWING IS TO BE REPRODUCED OR TRANSMITTED IN ANY FORM OR BY ANY MEANS, ELECTRONIC OR MECHANICAL, INCLUDING PHOTOCOPYING, RECORDING, OR BY ANY INFORMATION STORAGE AND RETRIEVAL SYSTEM, WITHOUT THE WRITTEN PERMISSION OF REXNORD INC.

DATE	DESCRIPTION
3/10/81	REVISED TO ADD REXNORD ROLLER SYSTEM
3/10/81	REVISED TO CORRECT CONNECTION DETAIL (1)
3/10/81	REVISED TO CORRECT CONNECTION DETAIL (2)
3/10/81	REVISED TO CORRECT CONNECTION DETAIL (3)
3/10/81	REVISED TO CORRECT CONNECTION DETAIL (4)

NOTE: THIS DRAWING IS THE PROPERTY OF REXNORD INC. AND IS TO BE USED ONLY FOR THE PROJECT AND LOCATION SPECIFIED ON THE DRAWING. IT IS TO BE RETURNED TO REXNORD INC. UPON COMPLETION OF THE PROJECT. NO PART OF THIS DRAWING IS TO BE REPRODUCED OR TRANSMITTED IN ANY FORM OR BY ANY MEANS, ELECTRONIC OR MECHANICAL, INCLUDING PHOTOCOPYING, RECORDING, OR BY ANY INFORMATION STORAGE AND RETRIEVAL SYSTEM, WITHOUT THE WRITTEN PERMISSION OF REXNORD INC.

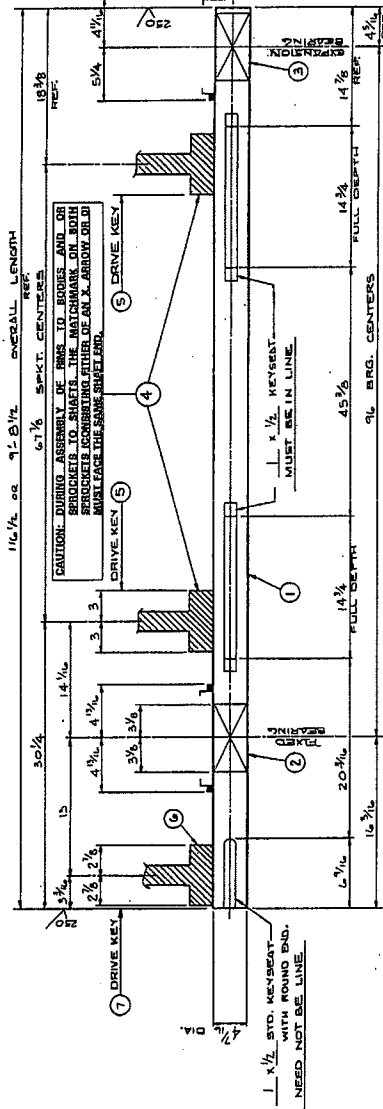
DATE	DESCRIPTION
3/10/81	REVISED TO ADD REXNORD ROLLER SYSTEM
3/10/81	REVISED TO CORRECT CONNECTION DETAIL (1)
3/10/81	REVISED TO CORRECT CONNECTION DETAIL (2)
3/10/81	REVISED TO CORRECT CONNECTION DETAIL (3)
3/10/81	REVISED TO CORRECT CONNECTION DETAIL (4)

NOTE: THIS DRAWING IS THE PROPERTY OF REXNORD INC. AND IS TO BE USED ONLY FOR THE PROJECT AND LOCATION SPECIFIED ON THE DRAWING. IT IS TO BE RETURNED TO REXNORD INC. UPON COMPLETION OF THE PROJECT. NO PART OF THIS DRAWING IS TO BE REPRODUCED OR TRANSMITTED IN ANY FORM OR BY ANY MEANS, ELECTRONIC OR MECHANICAL, INCLUDING PHOTOCOPYING, RECORDING, OR BY ANY INFORMATION STORAGE AND RETRIEVAL SYSTEM, WITHOUT THE WRITTEN PERMISSION OF REXNORD INC.

DATE	DESCRIPTION
3/10/81	REVISED TO ADD REXNORD ROLLER SYSTEM
3/10/81	REVISED TO CORRECT CONNECTION DETAIL (1)
3/10/81	REVISED TO CORRECT CONNECTION DETAIL (2)
3/10/81	REVISED TO CORRECT CONNECTION DETAIL (3)
3/10/81	REVISED TO CORRECT CONNECTION DETAIL (4)

NOTE: THIS DRAWING IS THE PROPERTY OF REXNORD INC. AND IS TO BE USED ONLY FOR THE PROJECT AND LOCATION SPECIFIED ON THE DRAWING. IT IS TO BE RETURNED TO REXNORD INC. UPON COMPLETION OF THE PROJECT. NO PART OF THIS DRAWING IS TO BE REPRODUCED OR TRANSMITTED IN ANY FORM OR BY ANY MEANS, ELECTRONIC OR MECHANICAL, INCLUDING PHOTOCOPYING, RECORDING, OR BY ANY INFORMATION STORAGE AND RETRIEVAL SYSTEM, WITHOUT THE WRITTEN PERMISSION OF REXNORD INC.

01-5-169722



MARK 100  
100 A Head

LIST OF COMPONENTS		REV.	DATE	BY	CHKD.	APP'D.
THIS 4 1/8 DIA. HEAD ASSEMBLY		5				
NOTE: DIMENSIONS ARE IN DECIMALS UNLESS OTHERWISE SPECIFIED AS FRACTIONS OR IN INCHES. DIMENSIONS ARE FRACTIONS UNLESS SPECIFIED AS DECIMALS.						
ITEM NO.	DESCRIPTION	QTY.	UNIT	REF.	DATE	BY
1	MATERIAL REQ'D FOR ONE MK 100					
2	1 4 1/8 DIA. SHFT. Q5.4111 9 1/8 L					
3	1 1/2 DIA. KEY W/ DUTY PULLER					
4	1 1/2 DIA. KEY W/ DUTY PULLER					
5	1 1/2 DIA. KEY W/ DUTY PULLER					
6	1 1/2 DIA. KEY W/ DUTY PULLER					
7	1 1/2 DIA. KEY W/ DUTY PULLER					

100 A

**Remond**  
Remond Corporation  
Remond Building  
Remond, N.J. 07071

COMPARTMENTAL - ALL RIGHTS RESERVED  
NO REPRODUCTION OR TRANSMISSION OF THIS DOCUMENT IS PERMITTED WITHOUT THE WRITTEN PERMISSION OF REMOND CORPORATION

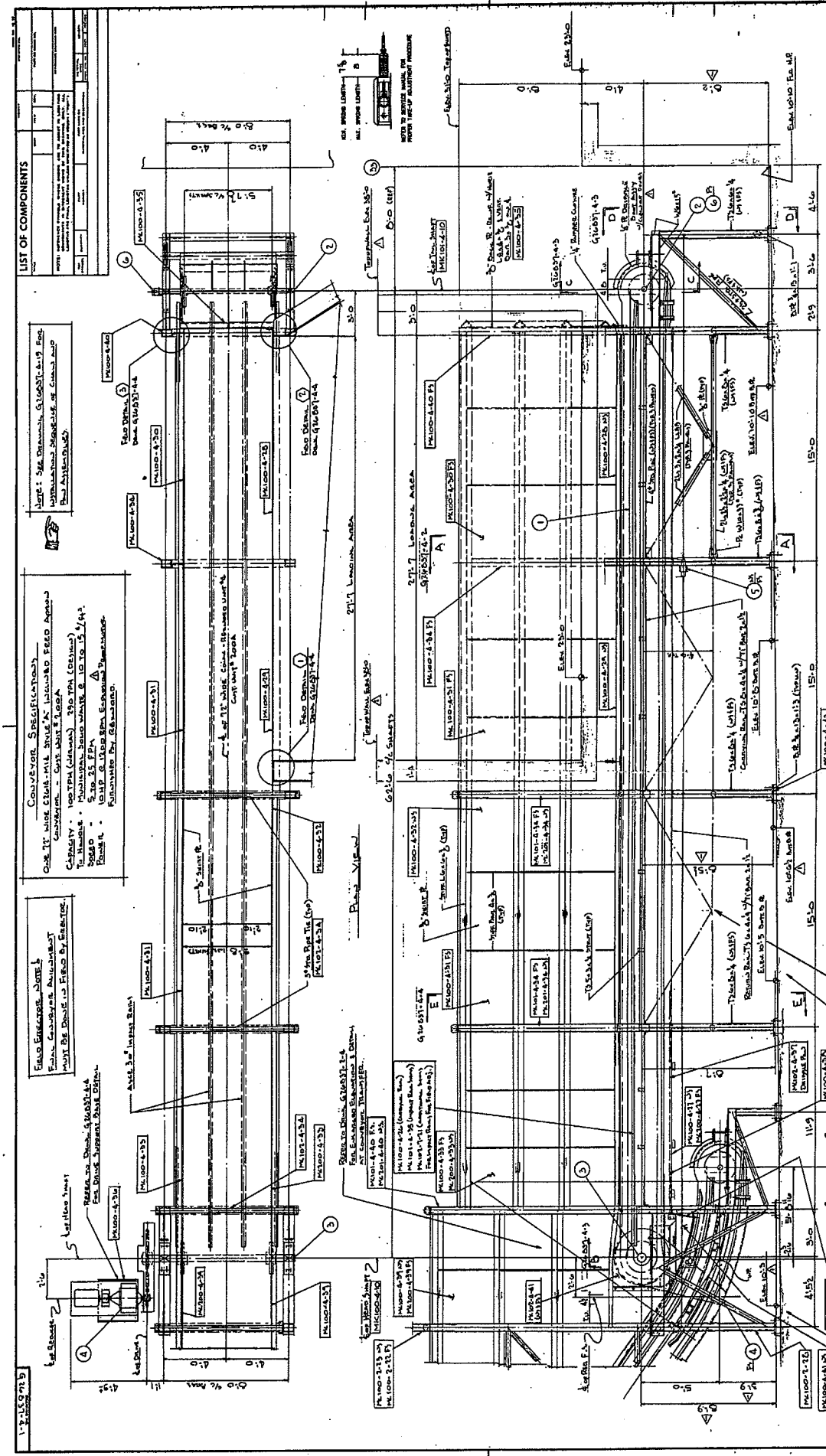
REVISION NO. 5  
DATE 02/26/83

REV.	DATE	BY	CHKD.	APP'D.
5				

**SAFETY CONSIDERATIONS:**  
This drawing is a technical drawing of a mechanical part. It is intended for use by qualified personnel only. It is not to be used for any other purpose without the written consent of Remond Corporation. The user is responsible for the safe use of this drawing and for the safety of all personnel involved in its use. The user must follow all applicable safety procedures and standards. The user must also ensure that the drawing is used in accordance with the applicable specifications and standards. The user must also ensure that the drawing is used in accordance with the applicable safety procedures and standards. The user must also ensure that the drawing is used in accordance with the applicable specifications and standards.

**REVISIONS:**  
REVISION NO. 5  
DATE 02/26/83





**LIST OF COMPONENTS**

ITEM NO.	DESCRIPTION	QTY	UNIT
1	Roller	1	EA
2	Roller	1	EA
3	Roller	1	EA
4	Roller	1	EA
5	Roller	1	EA
6	Roller	1	EA
7	Roller	1	EA
8	Roller	1	EA
9	Roller	1	EA
10	Roller	1	EA
11	Roller	1	EA
12	Roller	1	EA
13	Roller	1	EA
14	Roller	1	EA
15	Roller	1	EA
16	Roller	1	EA
17	Roller	1	EA
18	Roller	1	EA
19	Roller	1	EA
20	Roller	1	EA
21	Roller	1	EA
22	Roller	1	EA
23	Roller	1	EA
24	Roller	1	EA
25	Roller	1	EA
26	Roller	1	EA
27	Roller	1	EA
28	Roller	1	EA
29	Roller	1	EA
30	Roller	1	EA
31	Roller	1	EA
32	Roller	1	EA
33	Roller	1	EA
34	Roller	1	EA
35	Roller	1	EA
36	Roller	1	EA
37	Roller	1	EA
38	Roller	1	EA
39	Roller	1	EA
40	Roller	1	EA
41	Roller	1	EA
42	Roller	1	EA
43	Roller	1	EA
44	Roller	1	EA
45	Roller	1	EA
46	Roller	1	EA
47	Roller	1	EA
48	Roller	1	EA
49	Roller	1	EA
50	Roller	1	EA
51	Roller	1	EA
52	Roller	1	EA
53	Roller	1	EA
54	Roller	1	EA
55	Roller	1	EA
56	Roller	1	EA
57	Roller	1	EA
58	Roller	1	EA
59	Roller	1	EA
60	Roller	1	EA
61	Roller	1	EA
62	Roller	1	EA
63	Roller	1	EA
64	Roller	1	EA
65	Roller	1	EA
66	Roller	1	EA
67	Roller	1	EA
68	Roller	1	EA
69	Roller	1	EA
70	Roller	1	EA
71	Roller	1	EA
72	Roller	1	EA
73	Roller	1	EA
74	Roller	1	EA
75	Roller	1	EA
76	Roller	1	EA
77	Roller	1	EA
78	Roller	1	EA
79	Roller	1	EA
80	Roller	1	EA
81	Roller	1	EA
82	Roller	1	EA
83	Roller	1	EA
84	Roller	1	EA
85	Roller	1	EA
86	Roller	1	EA
87	Roller	1	EA
88	Roller	1	EA
89	Roller	1	EA
90	Roller	1	EA
91	Roller	1	EA
92	Roller	1	EA
93	Roller	1	EA
94	Roller	1	EA
95	Roller	1	EA
96	Roller	1	EA
97	Roller	1	EA
98	Roller	1	EA
99	Roller	1	EA
100	Roller	1	EA

**CONVEYOR SPECIFICATIONS**  
 ONE (1) WIDE CHAIN-MOUNTED INLAND FEED AREA  
 CAPACITY: 100 TONS (MINIMUM) 200 TONS (MAXIMUM)  
 TO HANDLE: MULTIGRADE IRON ORE, 10 TO 15 /ft<sup>3</sup>  
 5 TO 25 FPM  
 10 HP & UNDER PER FEED AREA  
 FOLLOWING BY REXNORD

**FIELD ERECTOR NOTE**  
 FIELD ERECTOR MUST BE MADE TO FIT BY ERECTOR  
 REVISIONS DUE TO CHANGES IN FIELD  
 SHALL BE MADE BY ERECTOR

**REVISIONS**  
 1. REVISIONS DUE TO CHANGES IN FIELD  
 SHALL BE MADE BY ERECTOR

**REVISIONS**  
 2. REVISIONS DUE TO CHANGES IN FIELD  
 SHALL BE MADE BY ERECTOR

**REVISIONS**  
 3. REVISIONS DUE TO CHANGES IN FIELD  
 SHALL BE MADE BY ERECTOR

CONFIDENTIAL - ALL RIGHTS RESERVED

**Rexnord Inc.**  
 Member Power Products  
 CONVEYOR COMPONENTS

DATE: 1/2/85  
 DRAWING NO: 910001-1-1  
 PROJECT NO: 910001-1-1

**SAFETY CONSIDERATIONS**

REVISIONS

NO.	DATE	DESCRIPTION
1	1/2/85	ISSUE FOR CONSTRUCTION
2	1/2/85	REVISIONS DUE TO CHANGES IN FIELD
3	1/2/85	REVISIONS DUE TO CHANGES IN FIELD
4	1/2/85	REVISIONS DUE TO CHANGES IN FIELD

**FIELD ERECTOR NOTE**  
 FIELD ERECTOR MUST BE MADE TO FIT BY ERECTOR  
 REVISIONS DUE TO CHANGES IN FIELD  
 SHALL BE MADE BY ERECTOR

**REVISIONS**  
 1. REVISIONS DUE TO CHANGES IN FIELD  
 SHALL BE MADE BY ERECTOR

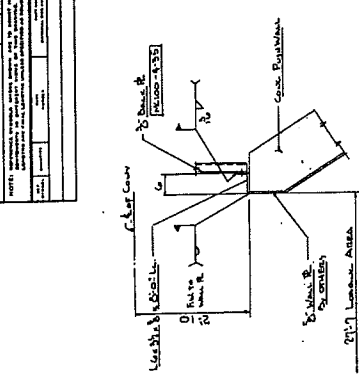
**REVISIONS**  
 2. REVISIONS DUE TO CHANGES IN FIELD  
 SHALL BE MADE BY ERECTOR

**REVISIONS**  
 3. REVISIONS DUE TO CHANGES IN FIELD  
 SHALL BE MADE BY ERECTOR

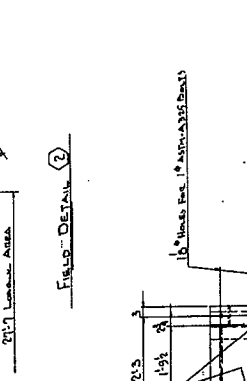


**LIST OF COMPONENTS**

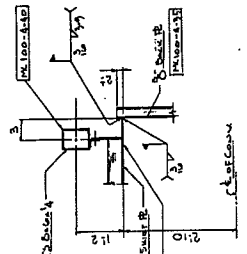
NO.	DESCRIPTION	QTY.	UNIT
1	CONCRETE		
2	STEEL		
3	WOOD		
4	GLASS		
5	PAINT		



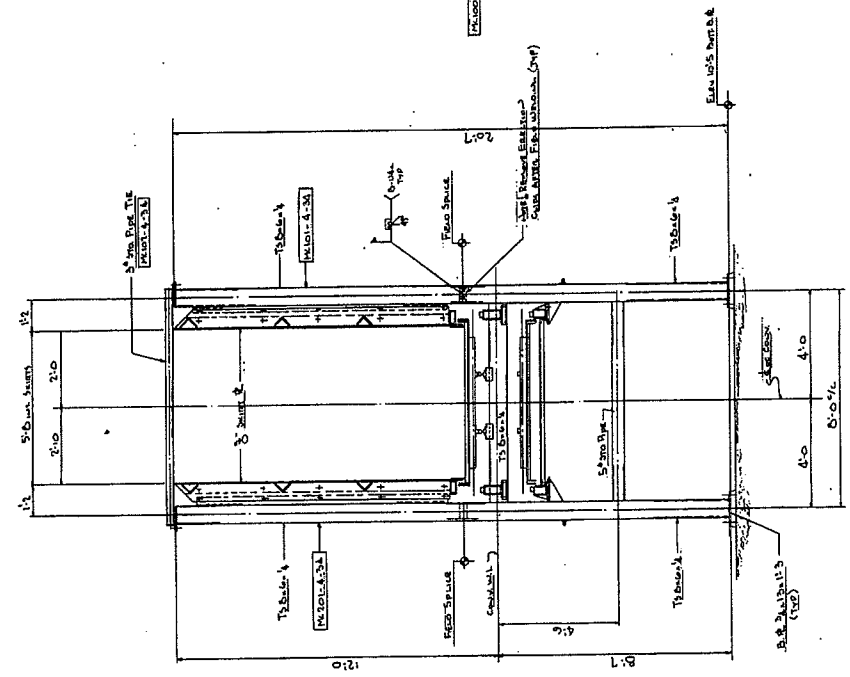
**FIELD DETAIL 1**



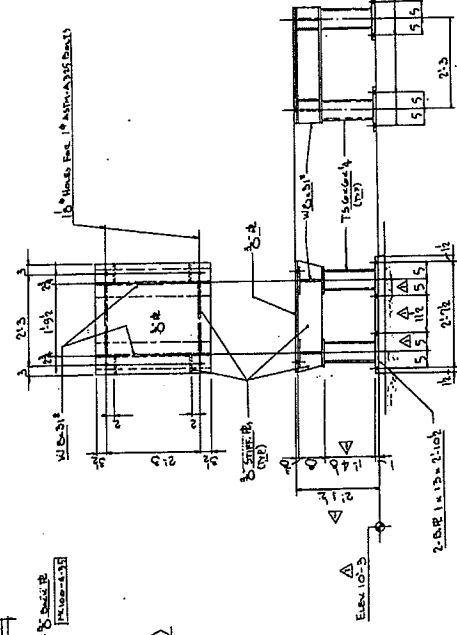
**FIELD DETAIL 2**



**FIELD DETAIL 3**



**SECTION E-E**



**CONCRETE DECK SUPPORT BASE DETAIL**  
(CONCRETE UNIT & CONCRETE UNIT)

Notes: This Detail is for Deck 916631-4-1, 916631-5-1.

CONFIDENTIAL - ALL RIGHTS RESERVED

**Rexnord Inc.**

Manufactured Power Division

CONCRETE DECK SUPPORT BASE DETAIL

916631-4-4

NO.	DESCRIPTION	QTY.	UNIT
1	CONCRETE		
2	STEEL		
3	WOOD		
4	GLASS		
5	PAINT		



04-159725

REV 5% DIA HEAD SHAFT 4 4 5 626831

LIST OF COMPONENTS

REV	5% DIA HEAD SHAFT	UNIT	NO.	REV	NO.	REV	NO.
1	HEAD SHAFT	4 4 5	626831				

REV	5% DIA HEAD SHAFT	UNIT	NO.	REV	NO.	REV	NO.
1	HEAD SHAFT	4 4 5	626831				

REV	5% DIA HEAD SHAFT	UNIT	NO.	REV	NO.	REV	NO.
1	HEAD SHAFT	4 4 5	626831				

REV	5% DIA HEAD SHAFT	UNIT	NO.	REV	NO.	REV	NO.
1	HEAD SHAFT	4 4 5	626831				

REV	5% DIA HEAD SHAFT	UNIT	NO.	REV	NO.	REV	NO.
1	HEAD SHAFT	4 4 5	626831				

REV	5% DIA HEAD SHAFT	UNIT	NO.	REV	NO.	REV	NO.
1	HEAD SHAFT	4 4 5	626831				

REV	5% DIA HEAD SHAFT	UNIT	NO.	REV	NO.	REV	NO.
1	HEAD SHAFT	4 4 5	626831				

REV	5% DIA HEAD SHAFT	UNIT	NO.	REV	NO.	REV	NO.
1	HEAD SHAFT	4 4 5	626831				

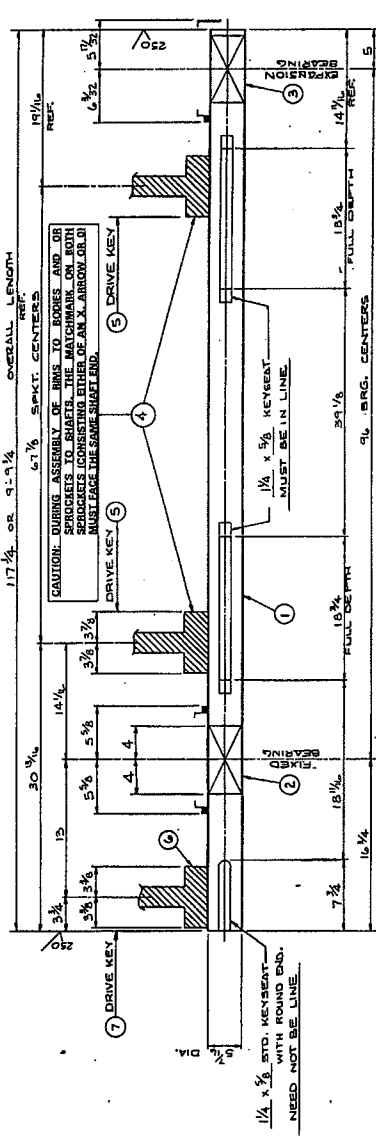
REV	5% DIA HEAD SHAFT	UNIT	NO.	REV	NO.	REV	NO.
1	HEAD SHAFT	4 4 5	626831				

REV	5% DIA HEAD SHAFT	UNIT	NO.	REV	NO.	REV	NO.
1	HEAD SHAFT	4 4 5	626831				

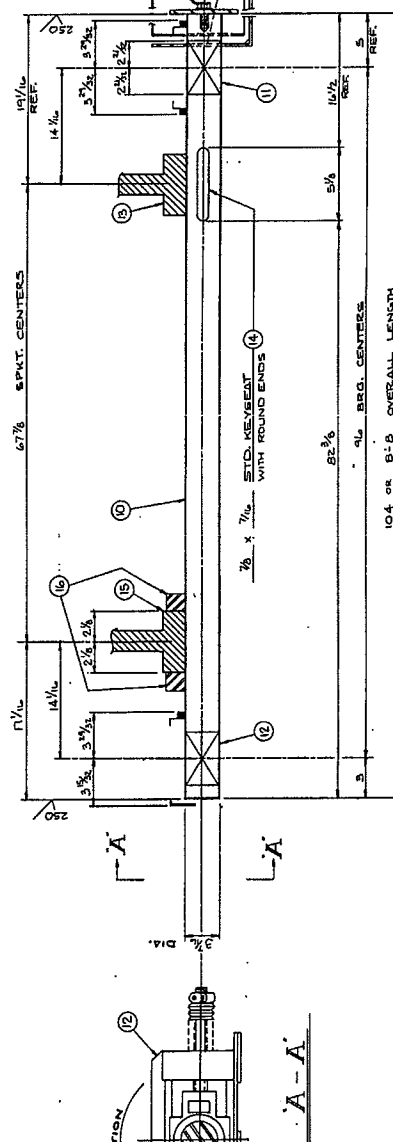
REV	5% DIA HEAD SHAFT	UNIT	NO.	REV	NO.	REV	NO.
1	HEAD SHAFT	4 4 5	626831				

REV	5% DIA HEAD SHAFT	UNIT	NO.	REV	NO.	REV	NO.
1	HEAD SHAFT	4 4 5	626831				

REV	5% DIA HEAD SHAFT	UNIT	NO.	REV	NO.	REV	NO.
1	HEAD SHAFT	4 4 5	626831				



200A Head



200A/100A tail

MARK 101 UNIT 4 4 5

100A

NOTE: SPOT DRILL SHAF. TO INCH DEEP BEHIND SET SCREWS BEFORE TIGHTENING. SELECT DRILL SIZE AS FOLLOWS:

SET SCREW DRILL SIZE	SET SCREW DIAL SIZE
1/8	3/16
3/16	1/4
1/4	5/16
5/16	3/8
3/8	1/2



Raymond Corporation  
Greenville, S.C. 29615  
Houston, TX 77061

REV	5% DIA HEAD SHAFT	UNIT	NO.	REV	NO.	REV	NO.
1	HEAD SHAFT	4 4 5	626831				

REV	5% DIA HEAD SHAFT	UNIT	NO.	REV	NO.	REV	NO.
1	HEAD SHAFT	4 4 5	626831				

REV	5% DIA HEAD SHAFT	UNIT	NO.	REV	NO.	REV	NO.
1	HEAD SHAFT	4 4 5	626831				

REV	5% DIA HEAD SHAFT	UNIT	NO.	REV	NO.	REV	NO.
1	HEAD SHAFT	4 4 5	626831				

REV	5% DIA HEAD SHAFT	UNIT	NO.	REV	NO.	REV	NO.
1	HEAD SHAFT	4 4 5	626831				

REV	5% DIA HEAD SHAFT	UNIT	NO.	REV	NO.	REV	NO.
1	HEAD SHAFT	4 4 5	626831				

REVISIONS

NO.	DATE	DESCRIPTION
1	3/17	INITIAL DESIGN
2	3/17	REVISIONS

APPROVED BY: [Signature]

DATE: 3/17

SCALE: AS SHOWN

UNIT: INCHES

DRILLING: 1/8, 3/16, 1/4, 5/16, 3/8, 1/2

FINISH: NONE

MARKING: 100A/100A

UNIT: 4 4 5

REF: 5

10.4 OR B-B - OVERALL LENGTH

67% SPKT. CENTERS

9% BRG. CENTERS

14 7/8

10 1/2

5

REF.

17 1/4

14 1/4

5 1/8

4

3 3/8

13

7 3/4

16 1/4

18 3/4

19 3/4

29 1/8

9 1/8

14 7/8

10 1/2

5

REF.

30 3/8

14 1/4

5 1/8

4

3 3/8

13

7 3/4

16 1/4

18 3/4

19 3/4

29 1/8

9 1/8

14 7/8

10 1/2

5

REF.

117 1/4 OR 91 1/4

67% SPKT. CENTERS

19 1/4

14 1/4

5 1/8

4

3 3/8

13

7 3/4

16 1/4

18 3/4

19 3/4

29 1/8

9 1/8

14 7/8

10 1/2

5

REF.

30 3/8

14 1/4

5 1/8

4

3 3/8

13

7 3/4

16 1/4

18 3/4

19 3/4

29 1/8

9 1/8

14 7/8

10 1/2

5

REF.

117 1/4 OR 91 1/4

67% SPKT. CENTERS

19 1/4

14 1/4

5 1/8

4

3 3/8

13

7 3/4

16 1/4

18 3/4

19 3/4

29 1/8

9 1/8

14 7/8

10 1/2

5

REF.

30 3/8

14 1/4

5 1/8

4

3 3/8

13

7 3/4

16 1/4

18 3/4

19 3/4

29 1/8

9 1/8

14 7/8

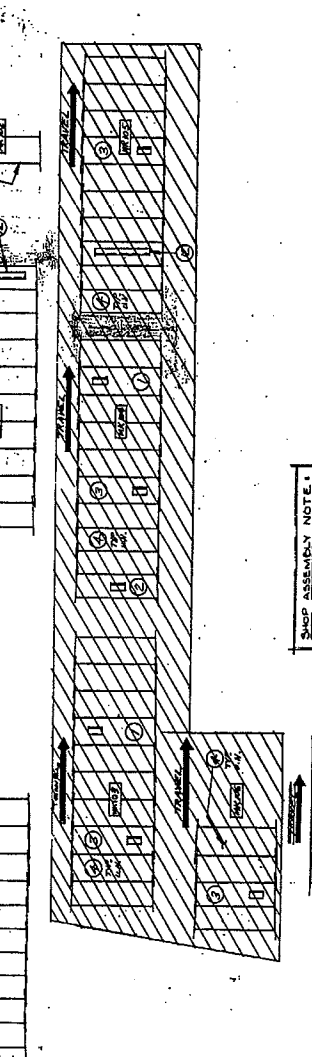
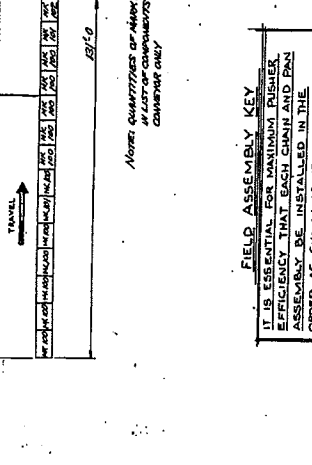
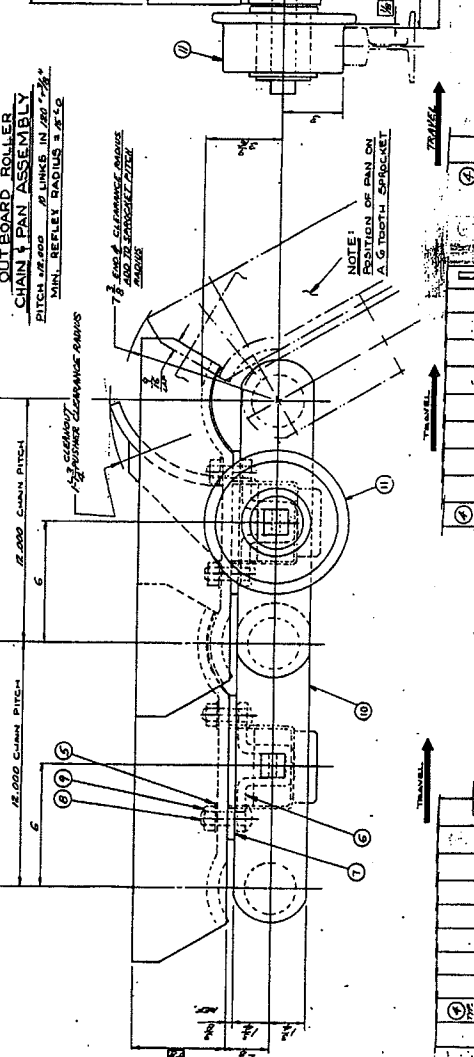
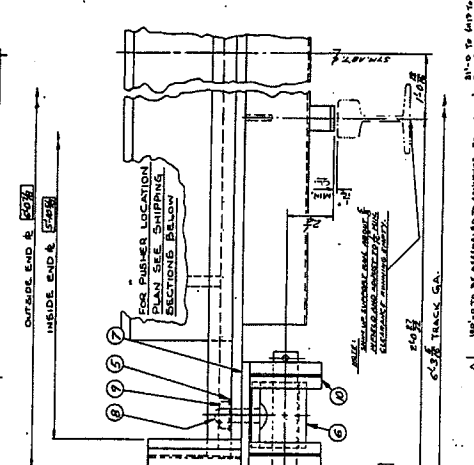
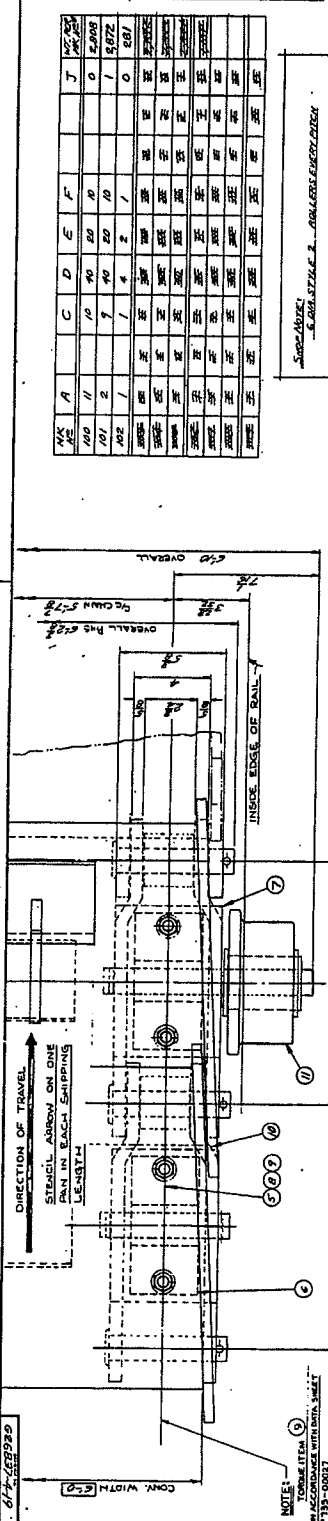
10 1/2

5

REF.

LIST OF COMPONENTS

NO	DESCRIPTION	QTY	UNIT	REMARKS
1	OUTER ROLLER CHAIN PAN ASSEMBLY	1	EA	
2	INNER ROLLER CHAIN PAN ASSEMBLY	1	EA	
3	OUTER ROLLER CHAIN PAN ASSEMBLY	1	EA	
4	INNER ROLLER CHAIN PAN ASSEMBLY	1	EA	
5	OUTER ROLLER CHAIN PAN ASSEMBLY	1	EA	
6	INNER ROLLER CHAIN PAN ASSEMBLY	1	EA	
7	OUTER ROLLER CHAIN PAN ASSEMBLY	1	EA	
8	INNER ROLLER CHAIN PAN ASSEMBLY	1	EA	
9	OUTER ROLLER CHAIN PAN ASSEMBLY	1	EA	
10	INNER ROLLER CHAIN PAN ASSEMBLY	1	EA	
11	OUTER ROLLER CHAIN PAN ASSEMBLY	1	EA	
12	INNER ROLLER CHAIN PAN ASSEMBLY	1	EA	
13	OUTER ROLLER CHAIN PAN ASSEMBLY	1	EA	
14	INNER ROLLER CHAIN PAN ASSEMBLY	1	EA	
15	OUTER ROLLER CHAIN PAN ASSEMBLY	1	EA	
16	INNER ROLLER CHAIN PAN ASSEMBLY	1	EA	
17	OUTER ROLLER CHAIN PAN ASSEMBLY	1	EA	
18	INNER ROLLER CHAIN PAN ASSEMBLY	1	EA	
19	OUTER ROLLER CHAIN PAN ASSEMBLY	1	EA	
20	INNER ROLLER CHAIN PAN ASSEMBLY	1	EA	



NO	DESCRIPTION	QTY	UNIT	REMARKS
1	OUTER ROLLER CHAIN PAN ASSEMBLY	1	EA	
2	INNER ROLLER CHAIN PAN ASSEMBLY	1	EA	
3	OUTER ROLLER CHAIN PAN ASSEMBLY	1	EA	
4	INNER ROLLER CHAIN PAN ASSEMBLY	1	EA	
5	OUTER ROLLER CHAIN PAN ASSEMBLY	1	EA	
6	INNER ROLLER CHAIN PAN ASSEMBLY	1	EA	
7	OUTER ROLLER CHAIN PAN ASSEMBLY	1	EA	
8	INNER ROLLER CHAIN PAN ASSEMBLY	1	EA	
9	OUTER ROLLER CHAIN PAN ASSEMBLY	1	EA	
10	INNER ROLLER CHAIN PAN ASSEMBLY	1	EA	
11	OUTER ROLLER CHAIN PAN ASSEMBLY	1	EA	
12	INNER ROLLER CHAIN PAN ASSEMBLY	1	EA	
13	OUTER ROLLER CHAIN PAN ASSEMBLY	1	EA	
14	INNER ROLLER CHAIN PAN ASSEMBLY	1	EA	
15	OUTER ROLLER CHAIN PAN ASSEMBLY	1	EA	
16	INNER ROLLER CHAIN PAN ASSEMBLY	1	EA	
17	OUTER ROLLER CHAIN PAN ASSEMBLY	1	EA	
18	INNER ROLLER CHAIN PAN ASSEMBLY	1	EA	
19	OUTER ROLLER CHAIN PAN ASSEMBLY	1	EA	
20	INNER ROLLER CHAIN PAN ASSEMBLY	1	EA	

**FIELD ASSEMBLY KEY**

IT IS ESSENTIAL FOR MAXIMUM ROLLER EFFICIENCY THAT EACH CHAIN AND PAN ASSEMBLY BE INSTALLED IN THE ORDERS AS SHOWN ABOVE.

**NOTE: QUANTITIES OF MANY NUMBERS SHOWN IN LIST OF COMPONENTS ARE FOR ONE COMPONENT ONLY**

NOTE: CUSTOMER'S UNIT NO. 2001

K.P. DIV. 418 626937-4-19

COMPENSATIONAL - ALL RIGHTS RESERVED

**Rexnord Inc.**

CORPORATION OF ILLINOIS

CHICAGO, ILLINOIS 60634

UNIT NO. 2001

CUST. ORDER NO. 626937-4-19

REVISIONS

REV. NO. 1

REV. DATE 4-19-62

REV. DESCRIPTION

REV. 1

REV. 2

REV. 3

REV. 4

REV. 5

REV. 6

REV. 7

REV. 8

REV. 9

REV. 10

REV. 11

REV. 12

REV. 13

REV. 14

REV. 15

REV. 16

REV. 17

REV. 18

REV. 19

REV. 20

**SHOP ASSEMBLY NOTE:**

EACH NO. IS TO BE SHIPPED TO SHIPPERS. NOTE DIRECTION OF TRAVEL.

