



ADDENDUM NO. 1
Issued January 22, 2009

TO

**“REQUEST FOR BIDS
FOR
REFURBISHMENT OF STEEL PAY CONVEYOR CV-101
AT THE
MID-CONNECTICUT WASTE PROCESSING FACILITY”
(RFB Number FY09-OP-011)
(RFB Issued December 22, 2008)**

Note: Bidders are required to acknowledge this and all Addenda in Section 5(a) of the Bid Form (as revised by this Addendum).

This Addendum consists of the following:

- (a) CRRA's revision of the Contract Documents to change the Bid Due Date to Friday, January 30, 2009; and
- (b) CRRA's responses to questions posed at the mandatory pre-bid conference on January 7, 2009 and to written questions that were received by CRRA by 3:00 p.m., January 14, 2009, the deadline specified in the Instructions To Bidders for the submission of written questions.

In addition, a copy of the sign-in sheet for the mandatory pre-bid conference is attached.

1. Bid Due Date

CRRA hereby revises the Contract Documents to change the Bid Due Date from Wednesday, January 28, 2009 to Friday, January 30, 2009. The bids are due by 3:00 pm on the Bid Due Date.

2. Responses to Questions

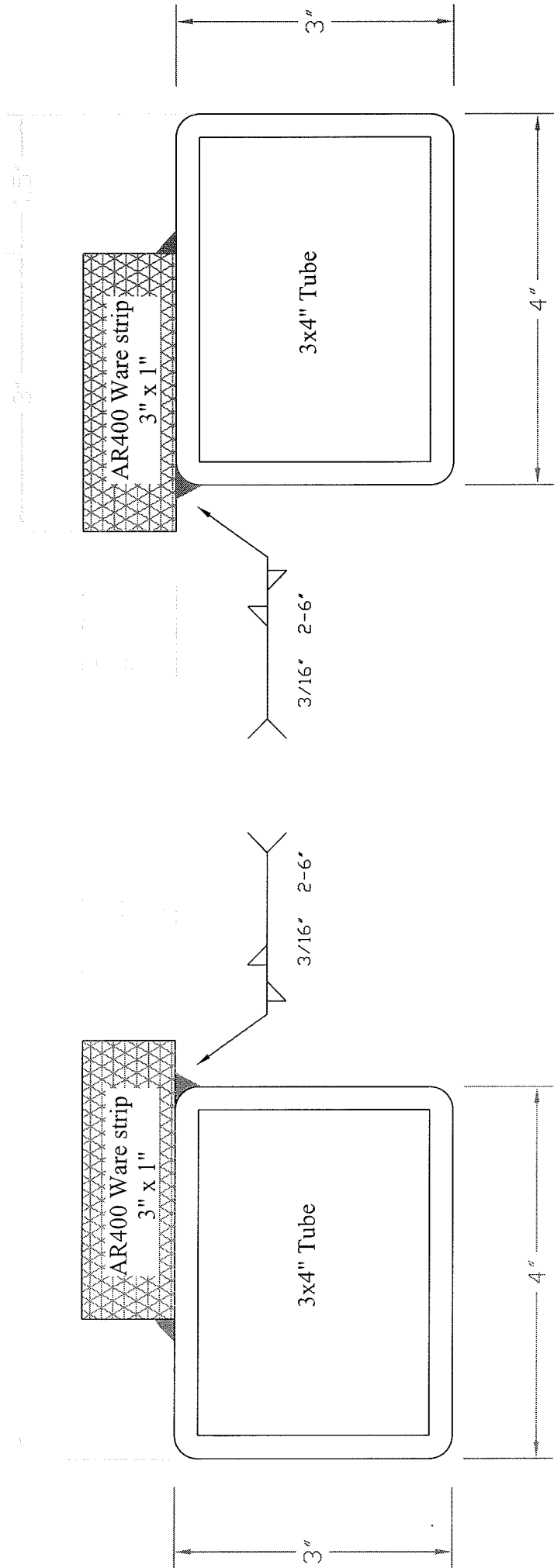
1.	Question	<p>Will CRRA provide an up-to-date parts list for the Project?</p> <p>Will the Head Shaft Drive Sprocket and Drive Chain be included in the material list?</p> <p>Will the Tail Shaft Conveyor Chain Sprockets have one (1) fixed and one (1) floating Sprocket or two (2) fixed Sprockets?</p> <p>Will the Conveyor Chain Sprockets be of the solid type or of the segmented type?</p> <p>What is the material specification for the return rail wear strip?</p>
	Answer	<p>An up-to-date materials list is attached to this Addendum.</p> <p>The Head Shaft Drive Sprocket and Drive Chain are included in the materials list.</p> <p>The Tail Shaft Conveyor Chain Sprockets will be one fixed (i.e., solid) and one floating (i.e., segmented) sprocket.</p> <p>Return rail specifications are listed on attached drawing.</p>
2.	Question	<p>Will CRRA consider pre-fabricating the wear strip to the box tube with mounting plates.</p>
	Answer	<p>Yes, a drawing showing such an alternative is attached and the Bid Price Form has been revised to accommodate pricing for the alternative. The revised Bid Price Form is attached to this Addendum and has been posted on CRRA's web site in Word Form format.</p>

3.	Question	Is all of the craft labor working on the conveyor required to have CT R-8 licenses?
	Answer	It is the responsibility of each bidder to determine whether or not all of the craft labor working on the conveyor are required to have CT R-8 licenses.
4.	Question	Will the crane operator be available for the entire duration of the refurbishment if necessary?
	Answer	The crane operator will be available for that period of time that is minimally necessary to complete the duration of work needing a crane operator.
5.	Question	Is the \$1,000,000 Professional Liability Insurance a necessary requirement since there is no engineering involved in the project?
	Answer	Yes, this requirement is still necessary.

TABLE I

MATERIALS TO BE SUPPLIED and INSTALLED BY CONTRACTOR
Parts list for 101 modification

	DESCRIPTION	MANUFACTURER	PART #	QUANTITY
	72" Complete pan conveyor per specification	Rex/Webster	See Drawings	1
	Voorhies 6" square wheels			74
	All necessary chains			
	Head Shaft Assembly			
	Head shaft		See Drawings	1
	Driven Sprocket 200C43T-34.25 P.D Bore: 5 7/16" with k.w hardened teeth	Martin	200C43T	1
	Sprocket split with k.w (hub for 5 7/16")	Rexnord	501-3445-10	2
	Bearing split fixed	Craft	S1BCH507 HD	1
	Bearing Split floating	Craft	S1BCH507FL	1
	Tail Shaft Assembly			
	Take up bearing (FRAME AND BEARING)	Rexnord	XVJ60789	1
	Take up bearing (FRAME AND BEARING)	Rexnord	XVK60789	1
	Tail shaft		See Drawings	1
	Sprocket Fixed (Split with Hub 3 7/16")	Rex / Martin	501-3445-3	1
	Sprocket Floating with bushing (Split with Hub 3 7/16")	Rex / Martin	501-3445-9	1
	SHAFT COLLAR split 3 7/16		H2C-343	2
	RAILS			
	Feed Rails		See Drawings	set
	Impact Rails		See Drawings	Set
	Bush Down rails		See Drawings	Set
	Return Rails		See Drawings	Set
	114 rail clip	Foster		150



Return Rails 101/201



BID PRICE FORM

**REFURBISHMENT OF STEEL PAN CONVEYOR CV-101
AT THE
MID-CONNECTICUT WASTE PROCESSING FACILITY
(RFB Number 09-OP-011)**

1. Base Bid

Bidder will complete the Work as specified in the Contract Documents for the refurbishment of steel pan conveyor CV-101 at the Mid-Connecticut Waste Processing Facility for the following lump sum bid price (please use table below).

Total Lump Sum Bid Price	
Dollars	Cents
(Use Numbers)	

(Use Words)

2. Alternative For Pre-Fabricating The Wear Strip To The Box Tube With Mounting Plates

Bidder will complete the Work as specified in the Contract Documents for the refurbishment of steel pan conveyor CV-101 at the Mid-Connecticut Waste Processing Facility, except that the wear strip will be pre-fabricated to the box tube with mounting plates, for the following lump sum bid price (please use table below).

Total Lump Sum Bid Price	
Dollars	Cents
(Use Numbers)	

(Use Words)

Bidder affirms that the total bid price above represents the entire cost to complete the Work in accordance with the Contract Documents, and that no claim will be made on account of any increase in wage scales, material prices, delivery delays, taxes, insurance, cost indexes or any other rates affecting the construction industry or this Project, and that each and every such claim is hereby expressly waived by Bidder.

Name of Bidder (Firm):	
Signature of Bidder Representative:	
Name (Type/Print):	
Title:	
Date:	

MANDATORY PRE-BID CONFERENCE AND SITE TOUR SIGN-IN SHEET
 REFURBISHMENT OF STEEL PAN CONVEYOR CV-101
 AT THE MID-CONNECTICUT WASTE PROCESSING FACILITY

WPF, 300 Maxim Road, Gate 70, Hartford, Connecticut
 10:00 a.m., Wednesday, January 7, 2009

(PLEASE PRINT)

Name		Company	PROVIDE A CRRA REPRESENTATIVE WITH A BUSINESS CARD OR FILL-IN THESE COLUMNS TO THE RIGHT			
Name		Company	Address	Email Address	Telephone Number	Fax Number
SCOTT SNEVA		LYDON MILLWRIGHT SERVICES, INC.				
STEVE CHAKES		ALISTAIR CONSTRUCTION INC.				
BILL FLETCHER		FLCF CONSTRUCTION NETWORK SERVICES				
JEFF ZAMPAGLIONE		MOTION INDUSTRIES				
DON BUTTERWORTH		MDC	300 Maxim	dbutterworth@themdc.org	X2908	
RICH QUELVE		CRRA				
RUSSELL KOWALSKI		CREA				
RON GINGRICH		CRRA				
Abdul Rabah		M.D.C				