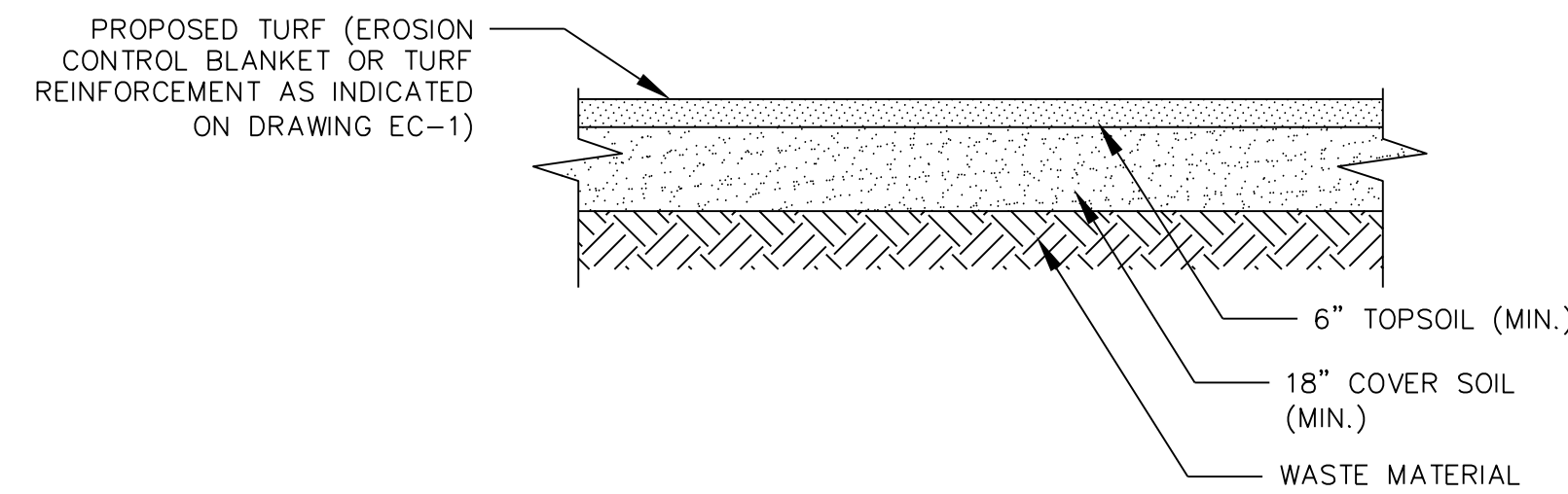
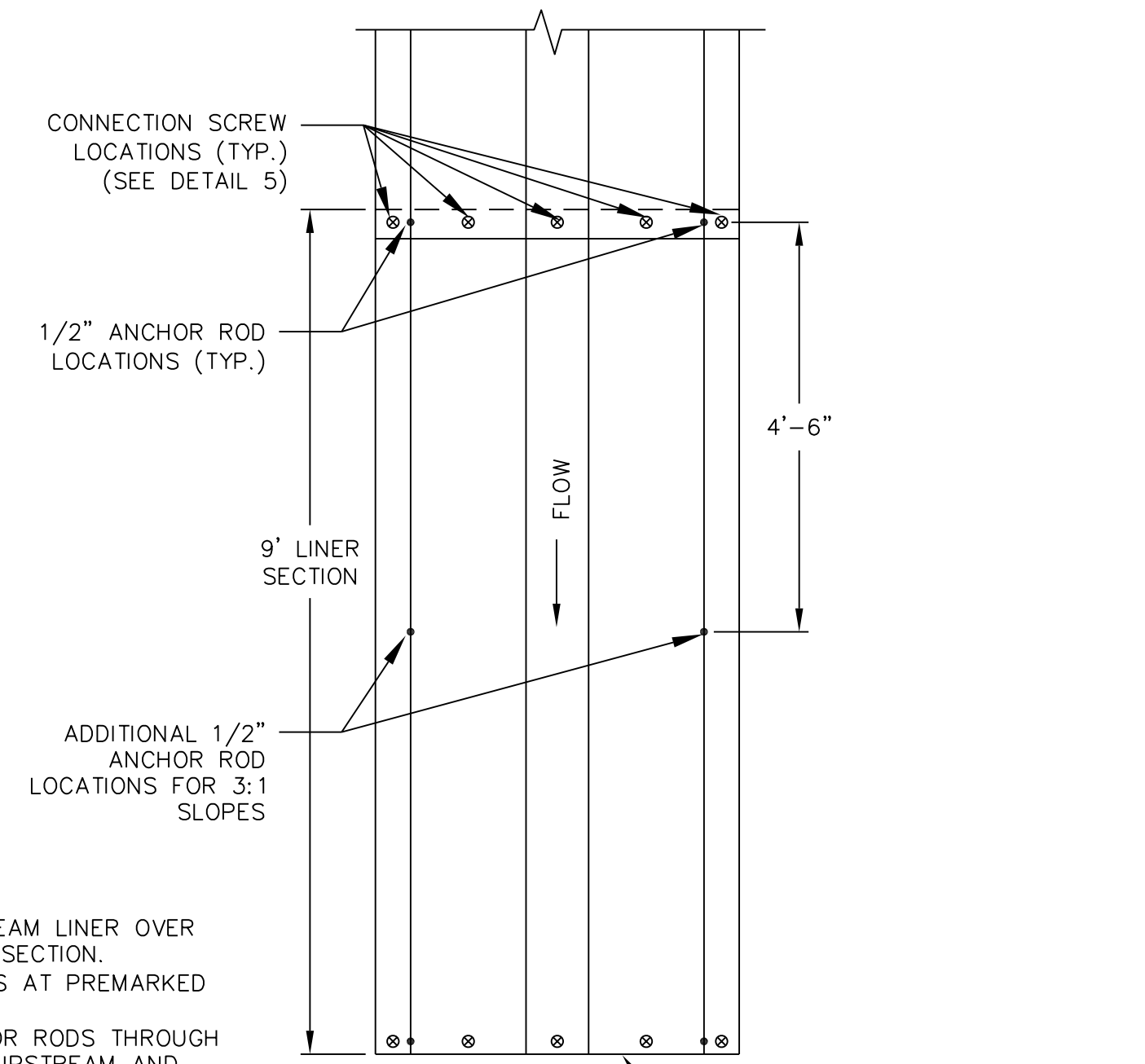


- NOTES:
- 1) ESTABLISH TURF WITHIN SWALE USING FLEXIBLE GROWTH MEDIA (FGM) (FLEXITERRA OR EQUIVALENT).
  - 2) LINE SWALE WITH JUTE NETTING AFTER APPLYING FGM.

**1 GRASS LINED DRAINAGE SWALE**  
N.T.S.

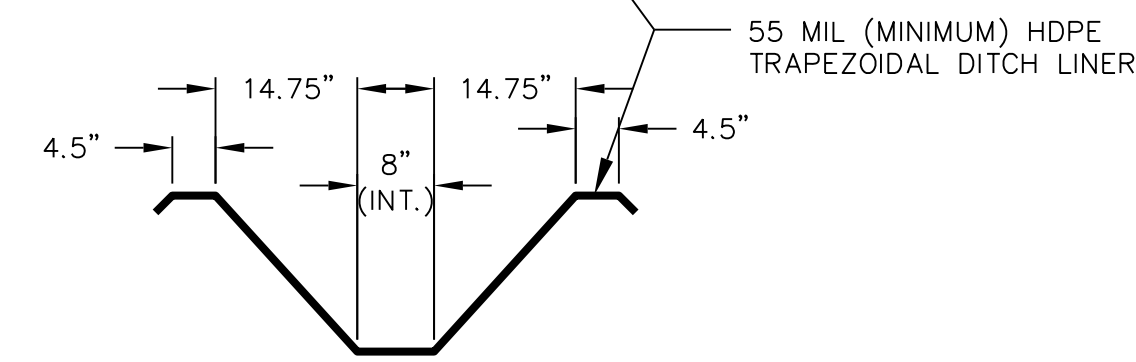


**2 TYPICAL COVER (CAP) SECTION**  
N.T.S.



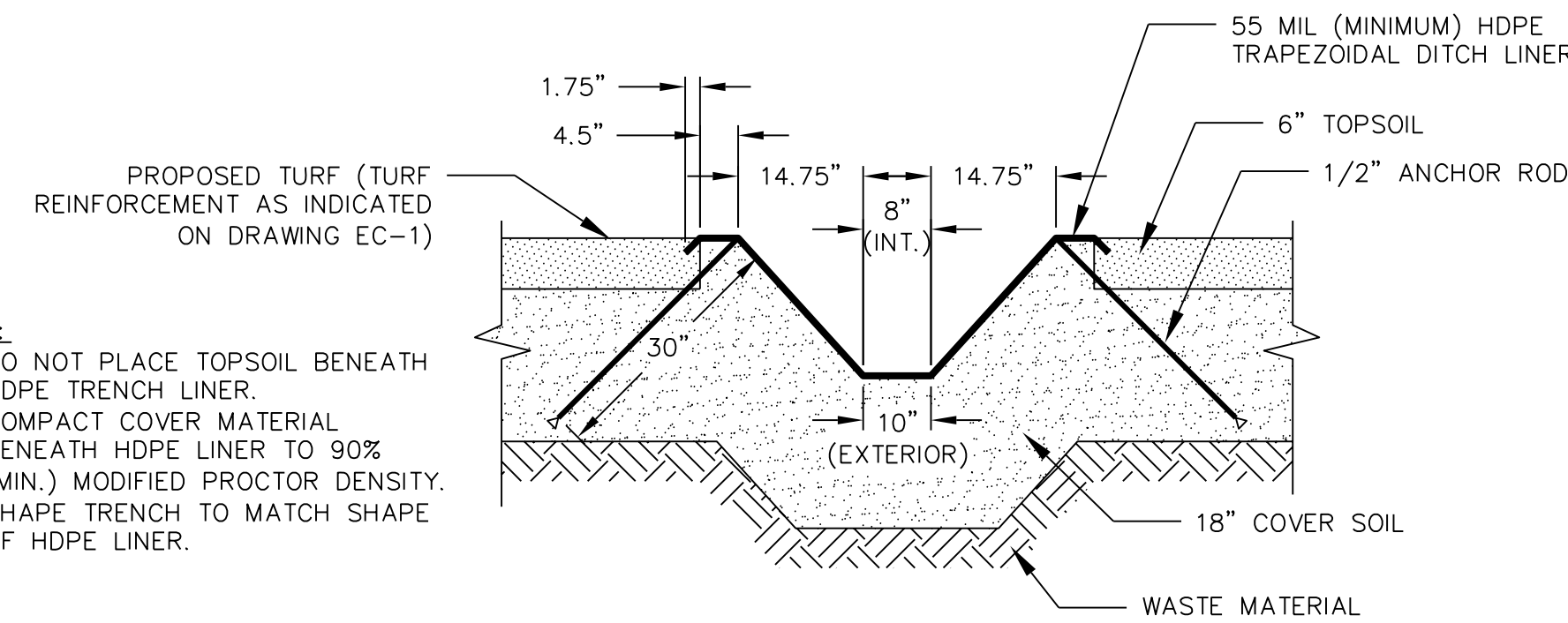
- NOTES:
- 1) PLACE UPSTREAM LINER OVER DOWNSTREAM SECTION.
  - 2) INSTALL BOLTS AT PREMARKED LOCATIONS.
  - 3) INSTAL ANCHOR RODS THROUGH OVERLAP OF UPSTREAM AND DOWNSTREAM SECTIONS AT LOCATIONS SHOWN.
  - 4) FOR 3:1 SLOPES, INSTALL ADDITIONAL ANCHOR RODS AT LOCATION INDICATED.

**PLAN VIEW**



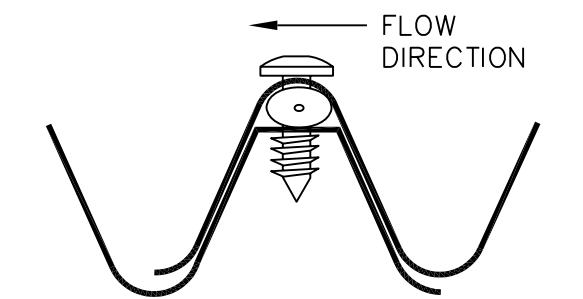
**SECTION VIEW**

**3 HDPE-LINED TRAPEZODAL DOWNCHUTE CONNECTION AND ANCHOR DETAIL**  
N.T.S.



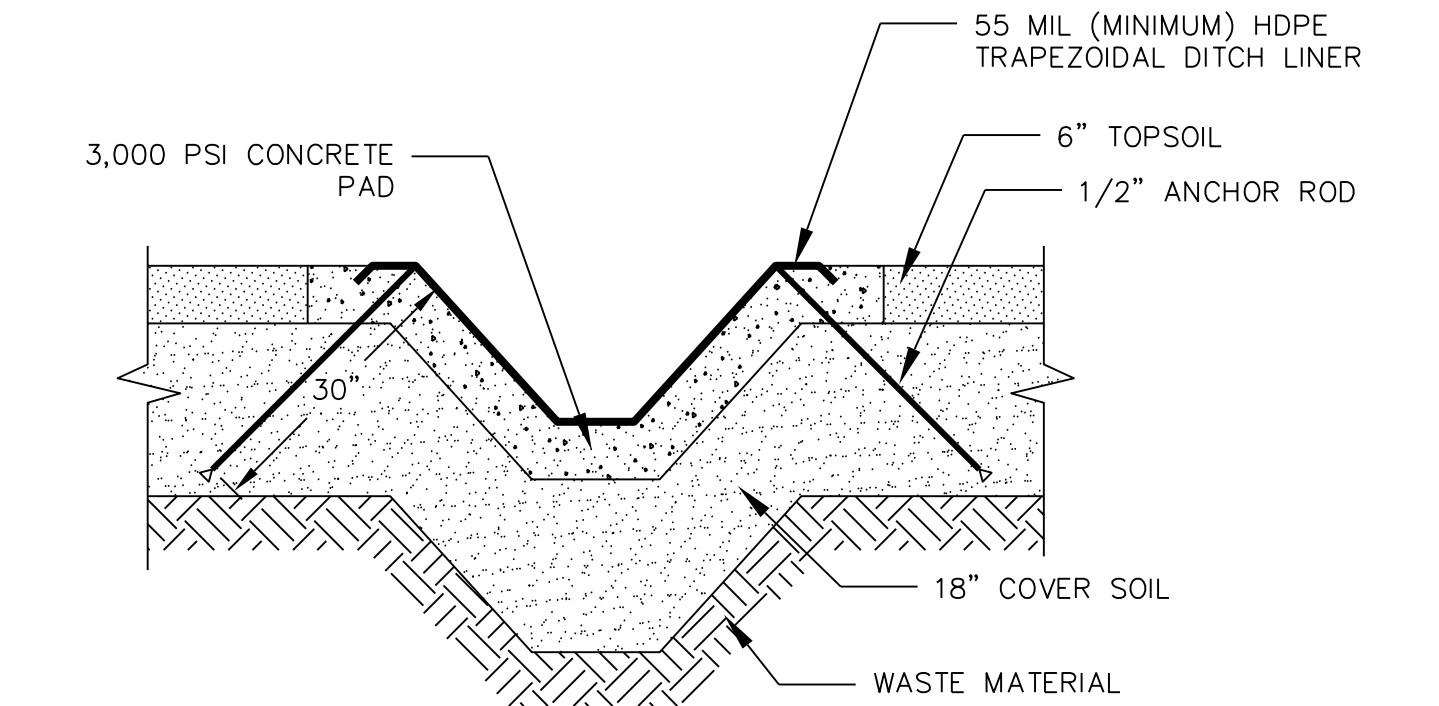
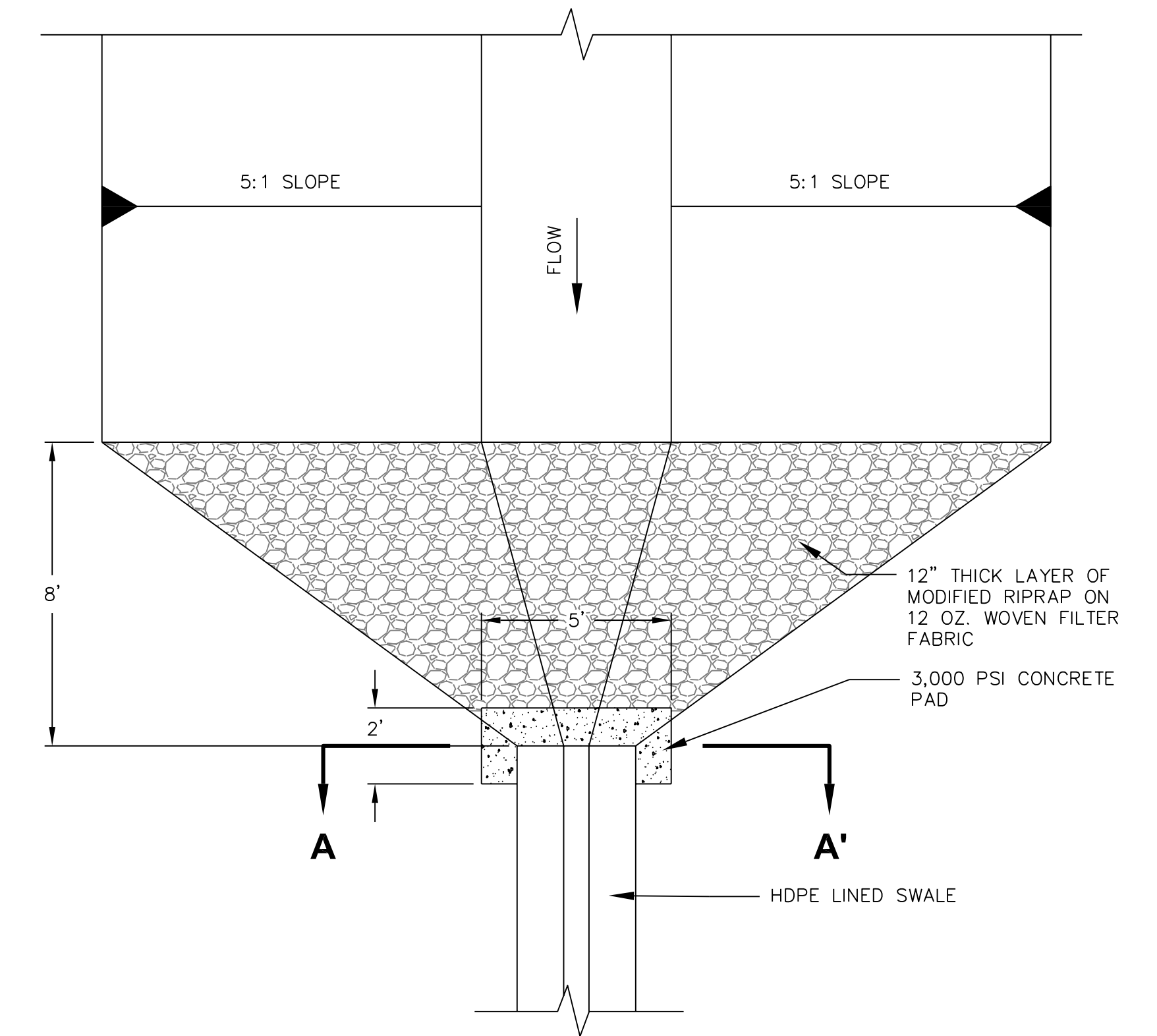
- NOTES:
- 1) DO NOT PLACE TOPSOIL BENEATH HDPE TRENCH LINER.
  - 2) COMPACT COVER MATERIAL BENEATH HDPE LINER TO 90% (MIN.) MODIFIED PROCTOR DENSITY.
  - 3) SHAPE TRENCH TO MATCH SHAPE OF HDPE LINER.

**4 HDPE-LINED TRAPEZODAL DOWNCHUTE ON FINAL COVER**  
N.T.S.



**5 HDPE SWALE LINER CONNECTION DETAIL**  
N.T.S.

- NOTES:
- 1) FIVE PREMARKED BOLT LOCATIONS FOR EACH CONNECTION POINT.
  - 2) WHEN CONNECTING INDIVIDUAL SECTIONS, UPSTREAM SECTIONS OVERLAP DOWNSTREAM SECTIONS.
  - 3) INSTALL SEAL UNDERNEATH ROUND CORRUGATION ON THE DOWNSTREAM SECTION.
  - 4) OVERLAP WITH DOWNSTREAM SECTION, DRILL 1/4" HOLE THROUGH BOTH CHANNELS, INSTALL SCREW.



**SECTION A-A'**

**6 GRASS-LINED SWALE INTO HDPE LINED SWALE CONNECTION DETAIL**  
N.T.S.

NO.	REVISIONS	DATE	APPROVAL
<b>CONNECTICUT RESOURCE RECOVERY AUTHORITY</b> <b>WATERBURY LANDFILL</b> <b>HIGHLAND AVENUE &amp; HIGHVIEW STREET</b> <b>WATERBURY, CONNECTICUT</b>			
<b>DETAILS</b>			
DESIGN: MB 10/15/07 DRAWN: KDH 10/15/07 CHECKED: CNS 10/15/07 SCALE: NTS PROJECT: 106811-000140-000000 DRAWING:		21 Griffin Road North Windsor, CT 06095 (860) 298-9692	
DATE: _____ CARL N. STOPPER PROFESSIONAL ENGINEER CT PE # 13255		<b>D-1</b>	