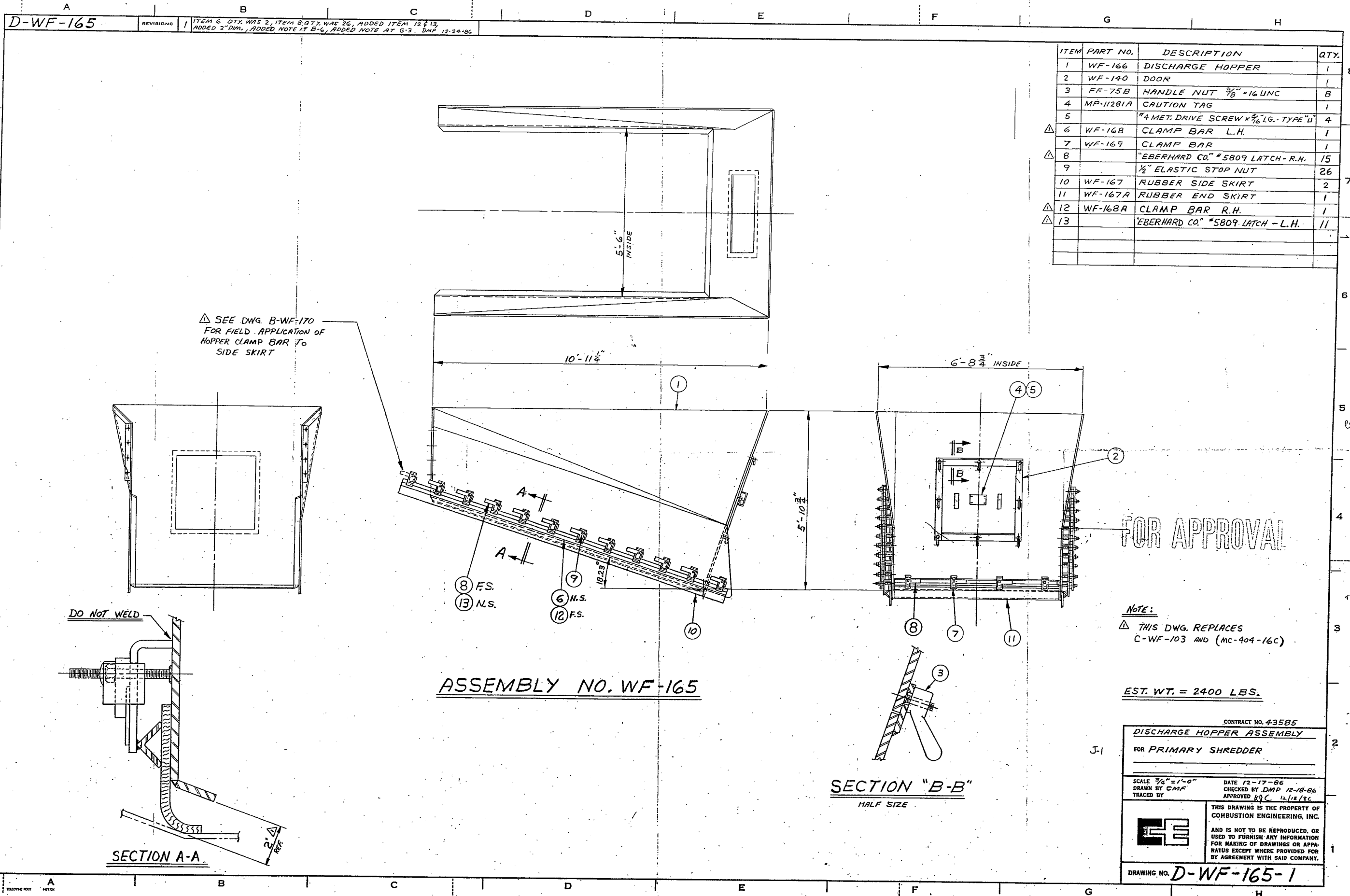


CONTRACT NO. 45385	
PRIMARY SHREDDER - BODY	
FOR MSW PROCESSING	
SCALE 1" = 1'-0"	DATE 9-17-85
DRAWN BY DMP	CHECKED BY AL 11-27-85
TRACED BY	APPROVED KFL 11/20/85
THIS DRAWING IS THE PROPERTY OF COMBUSTION ENGINEERING, INC. AND IS NOT TO BE REPRODUCED, OR USED TO FURNISH ANY INFORMATION FOR MAKING OF DRAWINGS OR APPARATUS EXCEPT WHERE PROVIDED FOR BY AGREEMENT WITH SAID COMPANY.	
DRAWING NO. D-WF-109-1	



ITEM	PART NO.	DESCRIPTION	QTY.
1	WF-166	DISCHARGE HOPPER	1
2	WF-140	DOOR	1
3	FF-75B	HANDLE NUT $\frac{3}{8}$ " - 16 UNC	8
4	MP-11281A	CAUTION TAG	1
5		"4 MET. DRIVE SCREW $\times \frac{5}{16}$ LG. TYPE "U"	4
△ 6	WF-168	CLAMP BAR L.H.	1
7	WF-169	CLAMP BAR	1
△ 8		"EBERHARD CO." #5809 LATCH - R.H.	15
9		$\frac{1}{2}$ " ELASTIC STOP NUT	26
10	WF-167	RUBBER SIDE SKIRT	2
11	WF-167A	RUBBER END SKIRT	1
△ 12	WF-168A	CLAMP BAR R.H.	1
△ 13		"EBERHARD CO." #5809 LATCH - L.H.	11

△ SEE DWG. B-WF-170 FOR FIELD APPLICATION OF HOPPER CLAMP BAR TO SIDE SKIRT

FOR APPROVAL

NOTE:
 △ THIS DWG. REPLACES C-WF-103 AND (MC-404-16C)

EST. WT. = 2400 LBS.

ASSEMBLY NO. WF-165

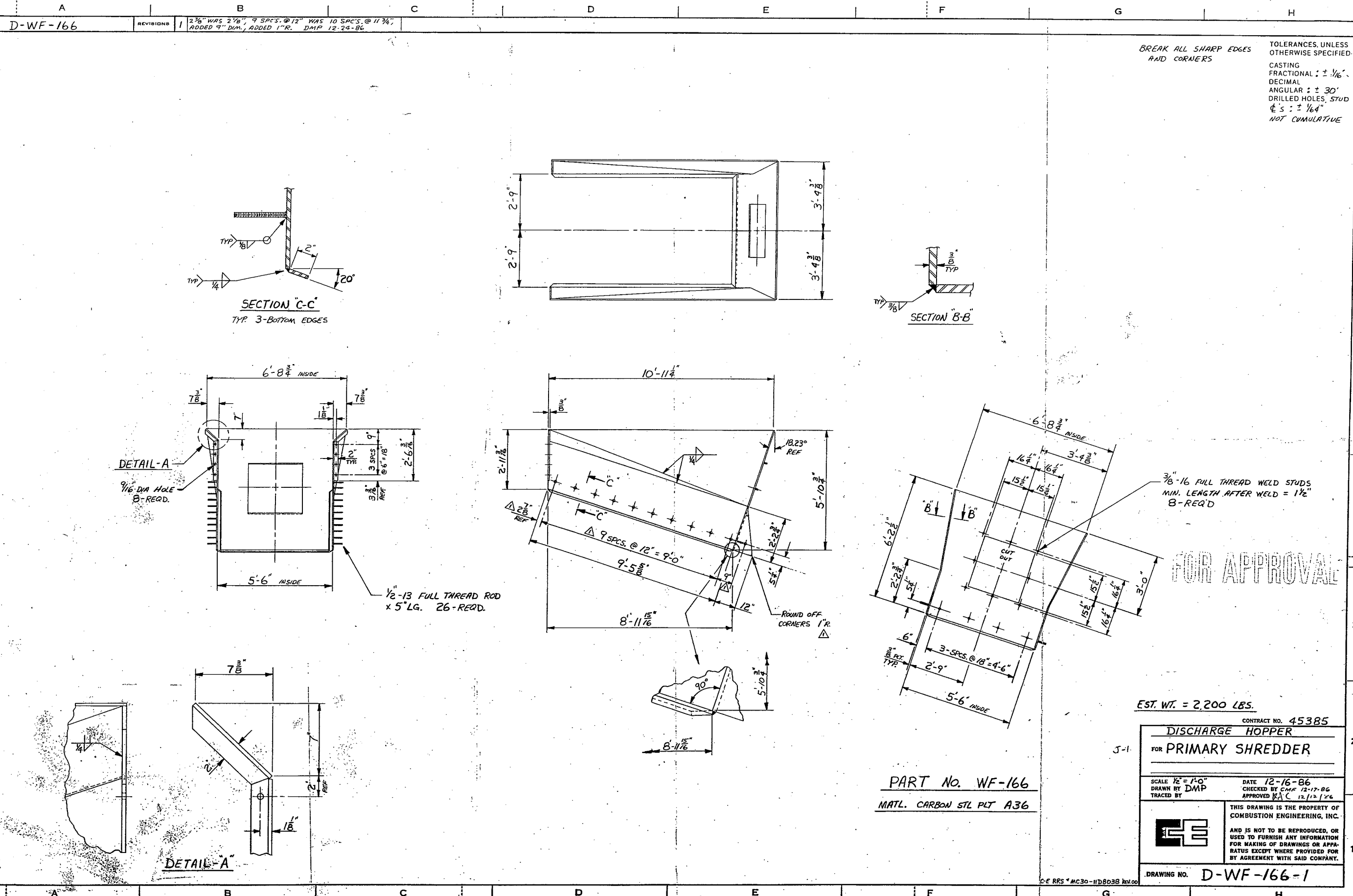
SECTION "B-B"
 HALF SIZE

CONTRACT NO. 43585
DISCHARGE HOPPER ASSEMBLY
 FOR PRIMARY SHREDDER

SCALE $\frac{3}{4}" = 1'-0"$ DATE 12-17-86
 DRAWN BY CMF CHECKED BY DMP 12-18-86
 TRACED BY APPROVED KJC 12/18/86

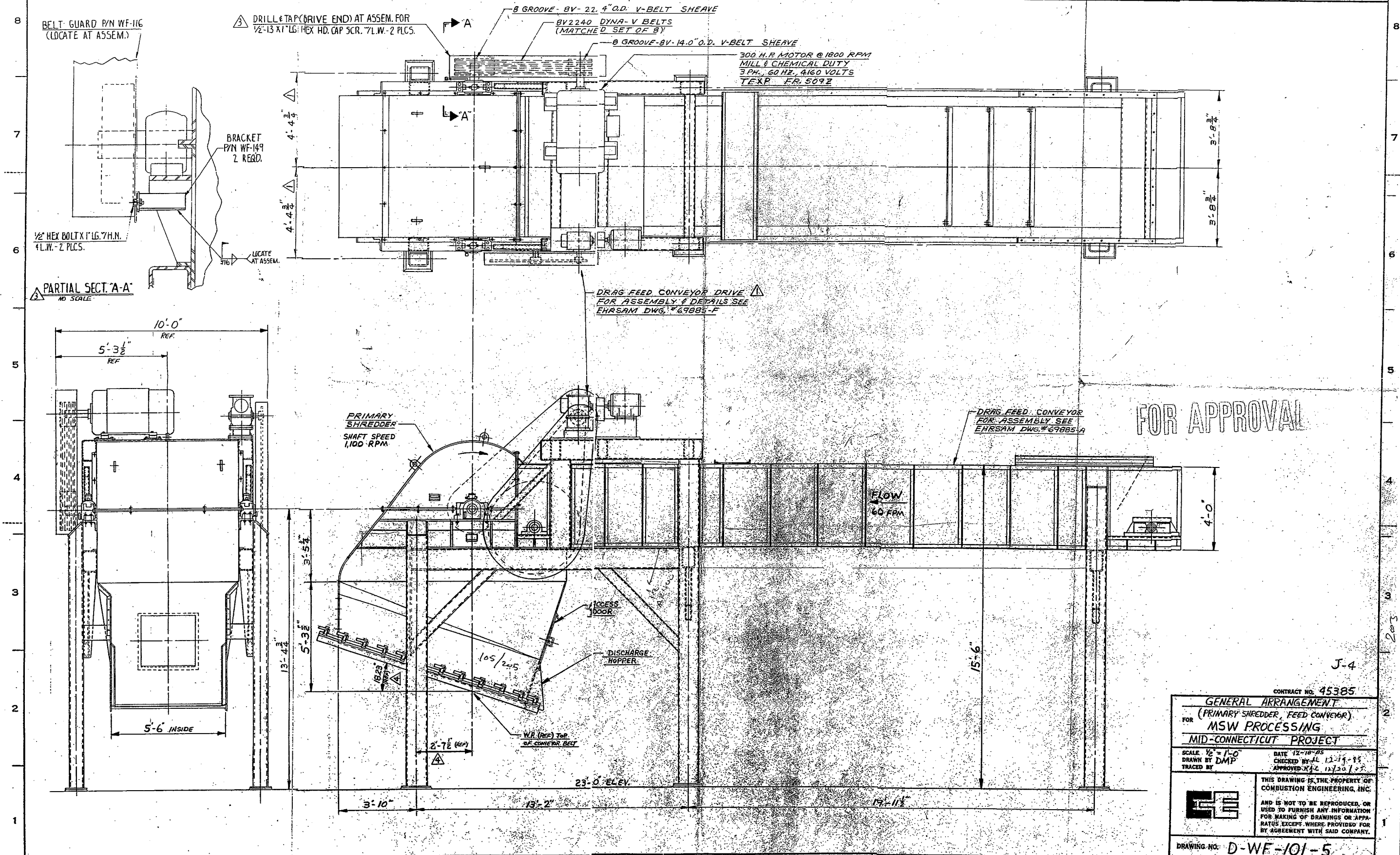
THIS DRAWING IS THE PROPERTY OF COMBUSTION ENGINEERING, INC. AND IS NOT TO BE REPRODUCED, OR USED TO FURNISH ANY INFORMATION FOR MAKING OF DRAWINGS OR APPARATUS EXCEPT WHERE PROVIDED FOR BY AGREEMENT WITH SAID COMPANY.

DRAWING NO. **D-WF-165-1**



D-WF-101

REVISIONS	1 CHANGED SUPPORT LEG DWS WAS 3" x 3" CHANGED FEED CONV. DRIVE DMP 2-18-86	2 REVISED DISCH. HOPPER DMP 5-7-86	3 ADDED: GUARD P/N, MITG. SCRS. & SECT. "A-A" GCA 6-17-86	4 AMEND REF. D.M.P. 183, 2/12/86 1/16" EA 7-15-86	5 UPDATED DWG. TO REFLECT CHANGES MADE IN FIELD BY CERR DMP 1-15-87
-----------	--	------------------------------------	---	---	---



CONTRACT NO. 45385

GENERAL ARRANGEMENT
FOR
(PRIMARY SHREDDER, FEED CONVEYOR)
MSW PROCESSING
MID-CONNECTICUT PROJECT

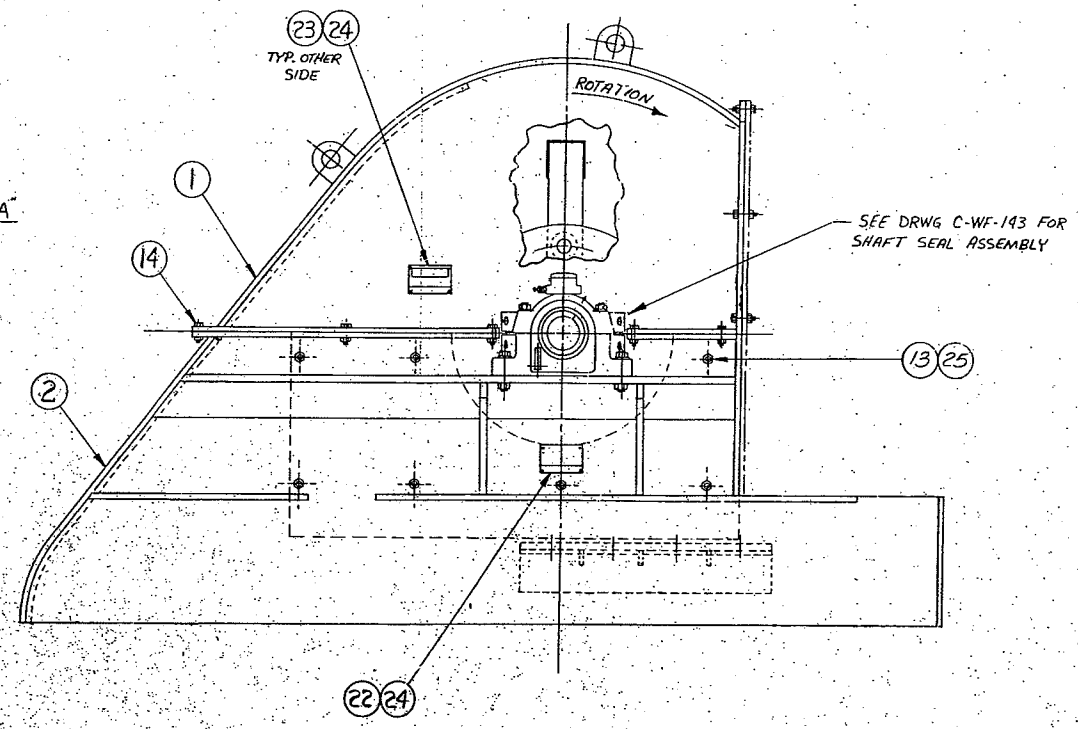
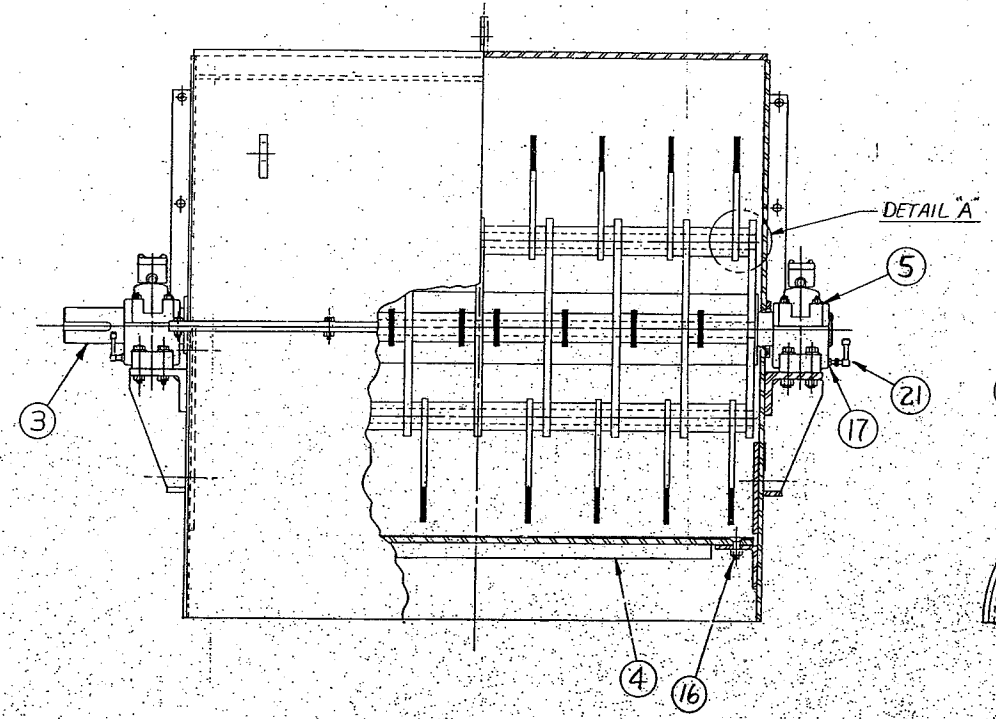
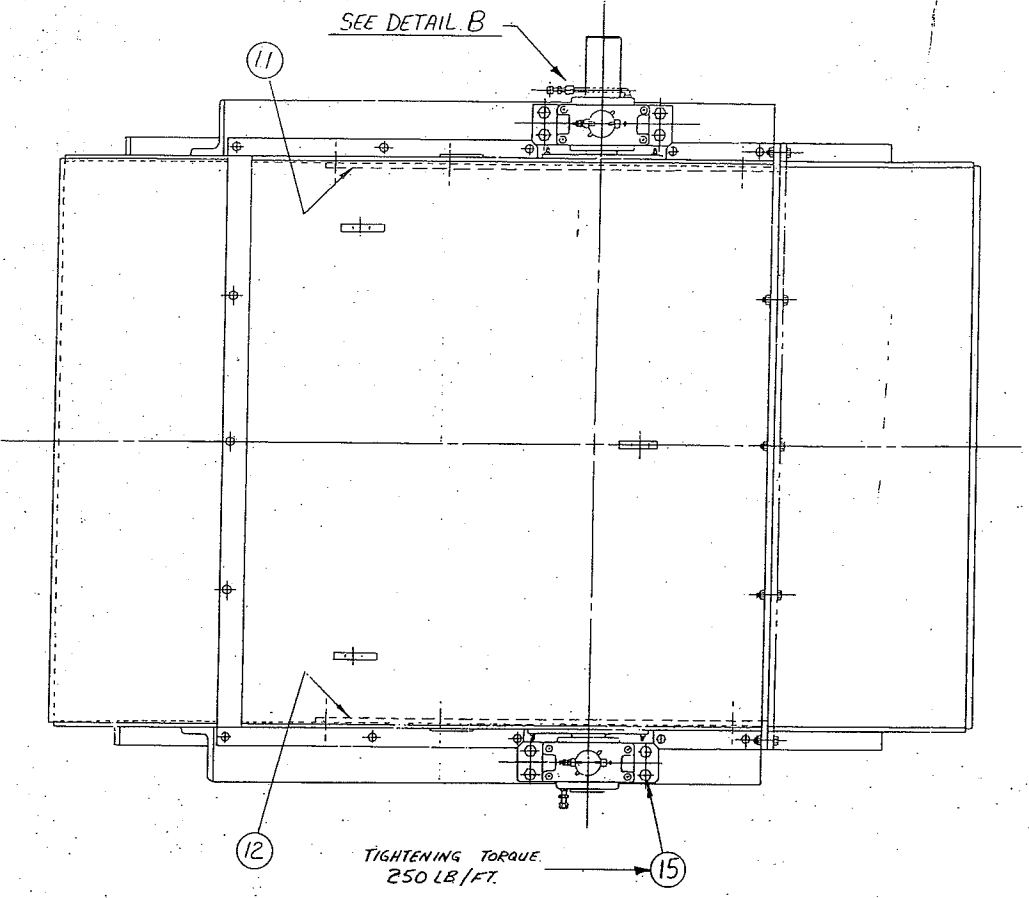
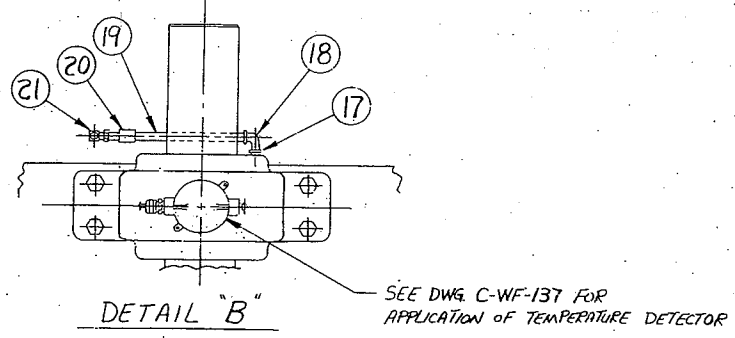
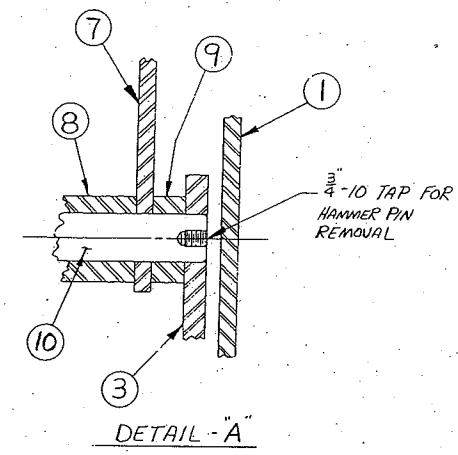
SCALE: 1/2" = 1'-0"
DATE: 12-18-85
DRAWN BY: DMP
CHECKED BY: JL 12-19-85
TRACED BY: [Signature]
APPROVED BY: [Signature] 12/20/85

THIS DRAWING IS THE PROPERTY OF
COMBUSTION ENGINEERING, INC.
AND IS NOT TO BE REPRODUCED, OR
USED TO FURNISH ANY INFORMATION
FOR MAKING OF DRAWINGS OR APPARATUS
EXCEPT WHERE PROVIDED FOR
BY AGREEMENT WITH SAID COMPANY.

DRAWING NO. **D-WF-101-5**

D-WF-102

REVISIONS	1	2	3
	ADDED ITEMS 22, 23, 24 DMP 5-5-86	ADDED ITEMS 11-13 & 25 FOR CONTRACT 41986 G.B.B. 20-86	ITEM 12, PN WAS WF-1618 DMP WAS CALLED WEAR PLATE 1-15-87



ITEM	PART No.	DESCRIPTION	QTY.
1	WF-108	SHREDDER COVER	1
2	WF-109	SHREDDER BODY	1
3	WF-110	ROTOR	1
4	WF-111	ANVIL PLATE	1
5	M-2179	PILLOW BLK BEARING "FREE"	1
6	M-2179A	PILLOW BLK BEARING "FIXED"	1
7	SEE B/M	HAMMER	32
8	SEE B/M	HAMMER SPACER	32
9	SEE B/M	HAMMER SPACER	32
10	WF-114	HAMMER PIN	4
11	WF-161	SIDE LINER	1
12	WF-161A	SIDE LINER	1
13		3/4" HEX. SOC. FL. HD. CAP. SCR. x 2 1/2" LG.	14
14		3/4" HEX. BOLT x 2 1/2" LG. + HN.	22
15		1" HEAVY HEX BOLT x 4 1/2" LG. PW. HN.	8
16		1" FLAT CTK. CAPSCREW x 2 3/4" LG. HN.	8
17		HEXAGON HD BUSHING 3/8" x 1/2"	2
18		1/4" 90° STREET ELBOW	1
19		1/4" PIPE NIPPLE x 6" LG.	1
20		1/4" PIPE COUPLING	1
21	MP-11436	SIGHT GAUGE "FG" w/UNION COUPLING	2
22	MP-11283	SERIAL No. PLATE	1
23	MP-11281A	CAUTION TAG	2
24		3/4" MET. DR. SCR. x 3/16" LG. TYPE - U	12
25		3/4" HEX. NUT	14

FOR HAMMER ARRANGEMENT DRWG SEE B/M

EST. WT. = 14,330 LBS.

CONTRACT NO. 45385

SHREDDER ASSEMBLY

FOR PRIMARY SHREDDER

MSW PROCESSING

SCALE 1" = 1'-0" DATE 10-7-85

DRAWN BY DWP CHECKED BY AL 12-19-85

TRACED BY APPROVED WJ 12/20/85

THIS DRAWING IS THE PROPERTY OF COMBUSTION ENGINEERING, INC. AND IS NOT TO BE REPRODUCED, OR USED TO FURNISH ANY INFORMATION FOR MAKING OF DRAWINGS OR APPARATUS EXCEPT WHERE PROVIDED FOR BY AGREEMENT WITH SAID COMPANY.

DRAWING NO. D-WF-102-3

ORIGINAL

D-SK-5554
D-7C-64