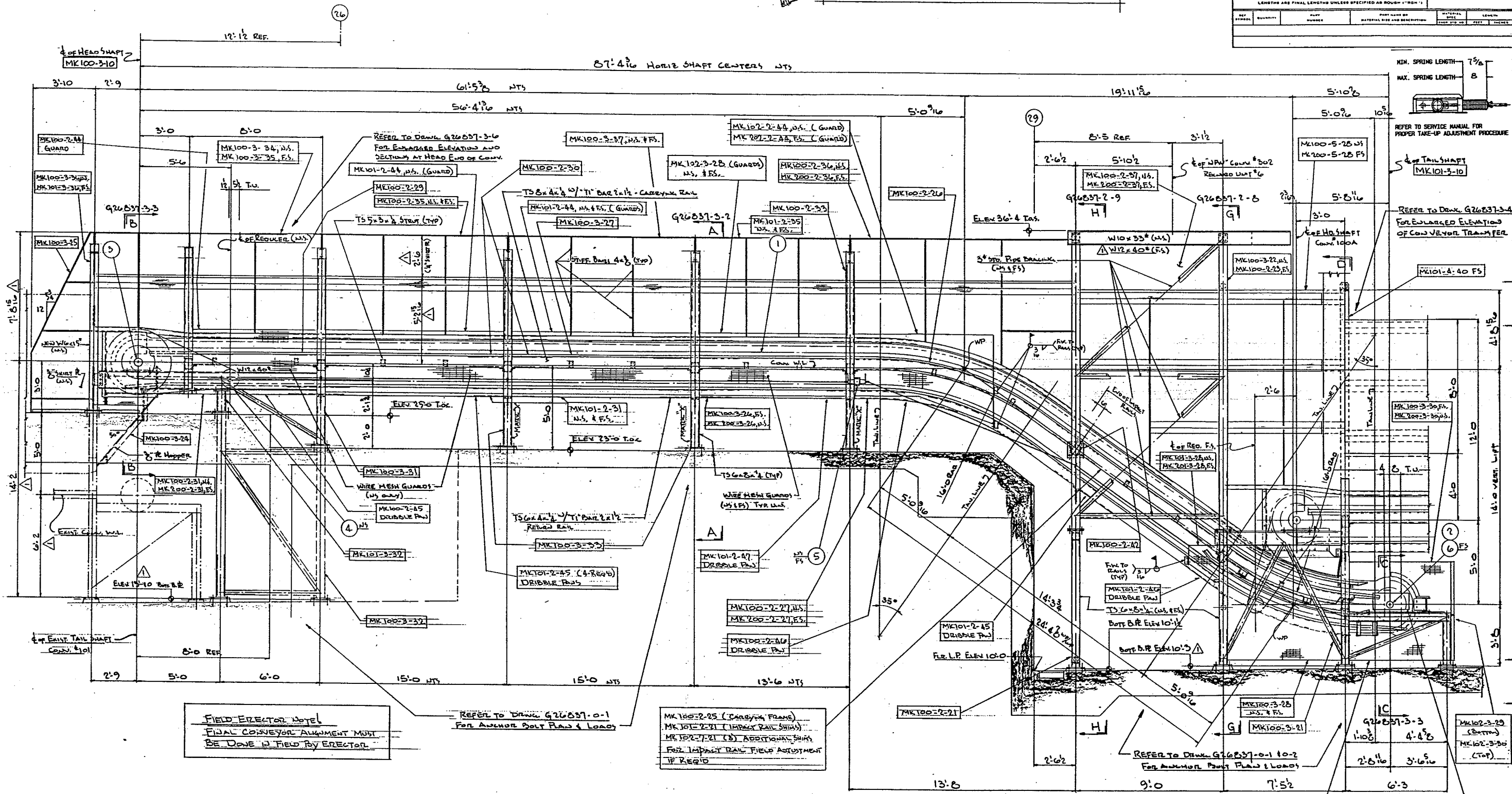


NOTE: SEE DRAWING G26837-3-19 FOR INSTALLATION SEQUENCE OF CHAIN AND PULLEY ASSEMBLIES.

| REF. SYMBOL | QUANTITY | UNIT | MATERIAL SIZE AND DESCRIPTION | MIN. LENGTH | MAX. LENGTH |
|---|----------|------|-------------------------------|-------------|-------------|
| LIST OF COMPONENTS | | | | | |
| NOTE: REFERENCE SYMBOLS WHERE SHOWN ARE TO ASSIST IN LOCATING COMPONENTS IN DIFFERENT VIEWS OF THIS DRAWING ONLY. ALL LENGTHS ARE FINAL LENGTHS UNLESS SPECIFIED AS ROUGH ("R") | | | | | |
| REF. SYMBOL | QUANTITY | UNIT | MATERIAL SIZE AND DESCRIPTION | MIN. LENGTH | MAX. LENGTH |



FIELD ERECTOR NOTE
 FINAL CONVEYOR ALIGNMENT MUST BE DONE IN FIELD BY ERECTOR.

REFER TO DRAW G26837-0-1 FOR ANCHOR BOLT PLANS & LOADS

MK 100-2-25 (CARBON FRAME)
 MK 101-2-21 (IMPACT RAIL SHIM)
 MK 102-2-21 (S) ADDITIONAL SHIM FOR IMPACT RAIL FIELD ADJUSTMENT IF REQ'D

REFER TO DRAW G26837-0-1 & 0-2 FOR ANCHOR BOLT PLANS & LOADS

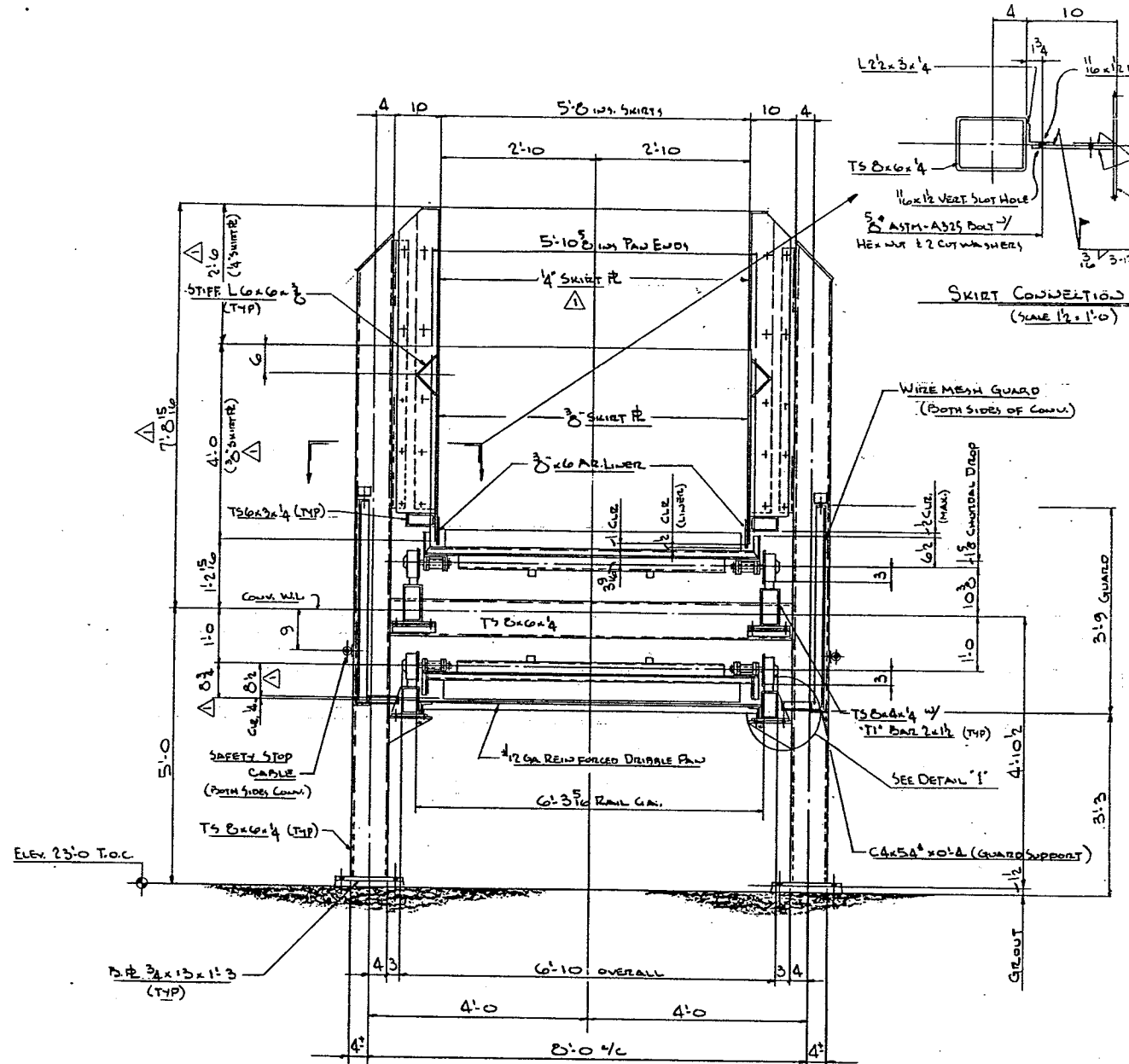
CONVEYOR SPECIFICATIONS
 ONE 72" WIDE C2614-M14 STYLE "A" INCLINED FEED APRON CONVEYOR - CUST. UNIT #100B
 CAPACITY - 100TPH (NORMAL) 150TPH (DESIGN)
 TO HANDLE - MUNICIPAL SOLID WASTE @ 10 TO 15 #/4"
 SPEED - 15 TO 45 FPM
 POWER - 25 HP @ 1200 RPM TEFC MOTOR
 FURNISHED BY REXNORD

SIDE ELEVATION OF 72" WIDE INCLINED FEED APRON CONVEYOR - CUST. UNIT #100B

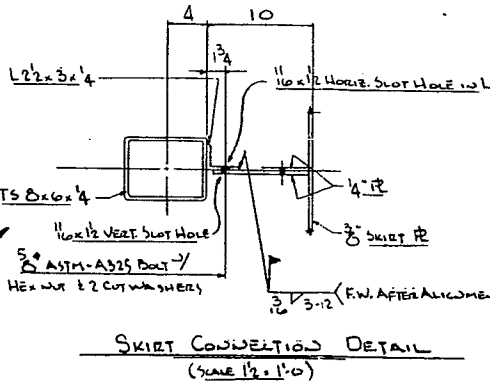
| PART SPECIFICATION | | ERECTOR NOTE: | | SAFETY CONSIDERATIONS: | | CERTIFICATION: | |
|------------------------|---------------------|--|---------------------|---|---------|--|---------|
| NO. OF CHANGES | REVISION NO. / DATE | NO. OF CHANGES | REVISION NO. / DATE | DO NOT USE FOR CONSTRUCTION UNLESS CERTIFIED | DATE | CONFIDENTIAL - ALL RIGHTS RESERVED | DATE |
| 1 | 4-15-91 | 1 | 4-15-91 | SAFETY features included within the scope of equipment supply are shown on contract drawings. Complete conformance with all applicable safety codes is the responsibility of the owner. | 3-18-91 | REXNORD INC. | 4/24/91 |
| DISTRIBUTION OF TRACKS | | Corrections of minor misfits and a reasonable amount of cutting and reaming are considered a part of erection. Any error which prevents assembly by moderate use of drift pins, cutting and welding is to be reported and approval of correction or change is to be received in writing before proceeding. Failure to comply will relieve Rexnord Inc. of all operational and monetary responsibility. | | Codes which are commonly applicable to safety related considerations for this equipment include, but are not limited to, ASME B15.1, ASME B30.1, OSHA, and MSHA. | | MID-CONNECTICUT EXPANSION, HARTFORD, CT. | |
| DRAWING NO. G26837-3-1 | | DRAWING NO. G26837-3-1 | | TITLE: GENERAL ARRANGEMENT OF REX 72" WIDE C2614-M14 STYLE "A" INCLINED FEED APRON CONVEYOR - CUST. UNIT #100B | | DRAWING NO. G26837-3-1 | |

Rexnord Inc.
 Mechanical Power Division
 CONVEYING EQUIPMENT OPERATION
 MILWAUKEE, WISCONSIN 53201

MAY 1990 EDITION



TYPICAL SECTION "A-A"



SKIRT CONNECTION DETAIL
(SCALE 1/2" = 1'-0")

- MATERIAL AND SERVICES TO BE FURNISHED BY OTHERS:
1. MOTOR CONTROLS WITH LOCAL AND/OR REMOTE STATIONS.
 2. ALL FIELD WIRING.
 3. FIELD MODIFICATIONS TO EXISTING CONVEYORS #101 & #201.
 4. FIRE PROTECTION SYSTEM.
 5. FOUNDATIONS AND SETTING OF ANCHOR BOLTS.
(NOTE: EPOXY ANCHOR BOLT SYSTEM WILL BE SUPPLIED BY REMORD FOR INSTALLATION BY OTHERS.)
 6. ALL GUARDS AND SAFETY DEVICES EXCEPT AS SPECIFIED IN OUR PROPOSAL.
 7. ERECTION AND INSTALLATION.
 8. FIELD FINISH PAINT AND PAINTING.
 9. START-UP.

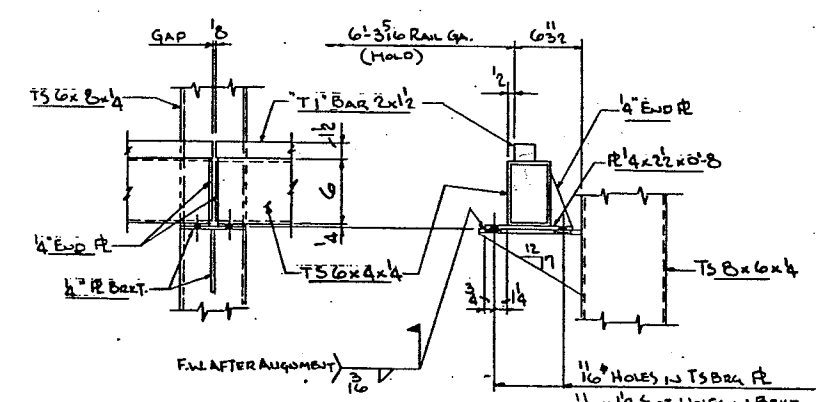
- GENERAL NOTES
1. ALL TS SHAPES SHALL CONFORM TO ASTM-A500 GR. B, F_y = 46000 PSI.
 2. ALL OTHER STEEL SHALL CONFORM TO ASTM-A36, F_y = 36000 PSI.
 3. DESIGN AND FABRICATION SHALL BE IN ACCORD WITH LATEST AISC SPECIFICATION.
 4. ALL WELDING SHALL BE DONE IN ACCORD WITH AWS STRUCTURAL WELDING CODE USING E70XX ELECTRODES.
 5. ALL BOLTED CONNECTIONS TO BE ASTM-A325 UNLESS NOTED. SEE DETAILS FOR SIZE AND NUMBER.
 6. ALL PIPE BRACING TO BE WELDED WITH 3/16" FILLET WELD ALL AROUND.

PAINTING AND SURFACE PROTECTION

ALL STRUCTURAL STEEL SHALL BE BLAST CLEANED IN ACCORDANCE WITH SSPC-G SPECIFICATION AND SHALL RECEIVE ONE SHOP PRIME COAT OF RED OXID PRIMER WITH A MINIMUM OF 3 MIL DRY FILM THICKNESS BEFORE SHIPMENT.

ALL MACHINED FINISHED PARTS SHALL RECEIVE ONE SHOP COAT OF "SMA-KOTE" FOR RUST PREVENTION.

ALL MACHINERY ITEMS SUCH AS SPROCKETS, BEARINGS AND REDUCERS SHALL BE PAINTED WITH MANUFACTURER'S STANDARD MACHINERY ENAMEL.



DETAIL "J"
(SCALE 1/2" = 1'-0")

| LIST OF COMPONENTS | | | | | | | | | |
|--------------------|----------|--|--|---------|----------|------|----|------|-------|
| REF. SYMBOL | QUANTITY | DESCRIPTION | UNIT | REMARKS | REVISION | DATE | BY | CHKD | APP'D |
| 2-1 | 1 | 188 (188 PITCHES) G26837-3-19 | LN. FT. OF 72" WIDE, STYLE 'A' C2614-M14 | | | | | | |
| | | APRON CONVEYOR ASSEMBLY COMPOSITION OF: 72" WIDE x 12" PITCH x 3/8" THICK DOUBLE BEADED STYLE 'A' PANS 1/2" BOX SECTION REINFORCING TWO ROWS OF IMPACT SHOES & 3/8" x 4" HIGH ENDS MOUNTED ON TWO STRANDS OF C2614-M14 CHAIN STEEL CHAIN WITH TRI-LOCK SADDLES MOUNTED TO PAN BOTTOM EVERY PITCH & SECURED TO CHAIN BY MEANS OF 1/8" DIA. STUD SHAFTS SPACED MID-PITCH EVERY LINE. STUD SHAFTS WILL BE FITTED WITH 6" STYLE #2 ROLLERS EVERY OTHER LN. EVERY FOURTH PAN WILL HAVE A WELD STEEL PLATE TO THE PAN WIDTH ARRANGED IN A STAGGERED PATTERN. | | | | | | | |
| 2 | 1 | TAIL SHAFT ASSEMBLY CONSISTING OF: G26837-3-10-101 | | | | | | | |
| | | 1- 3/16" AISI 1042, CF3 SHAFT 2- REX #2614-6T-24.00 PD. SEALED FACE SPL. SPT. 1/2" HARDENED TEETH (ONE K5, 1/16" DIA. OTHER TO RUN LOOSE) 2- 3/16" STEEL SET COLLARS 1- BMH10-5307-12 HEAVY DUTY SPRING LOADED T.U. DR. ASSEMBLY 1- AMH10-5307-12 HEAVY DUTY SPRING LOADED T.U. DR. ASSEMBLY | | | | | | | |
| 3 | 1 | HEAD SHAFT ASSEMBLY CONSISTING OF: G26837-3-10-100 | | | | | | | |
| | | 1- 3/16" AISI 1042, CF3 SHAFT 2- REX #2614-6T-24.00 PD. SEALED FACE SPL. SPT. 1/2" HARDENED TEETH (ONE K5, 1/16" DIA. OTHER TO RUN LOOSE) 1- AMP-5507-F PULLER BLOCK (FIBER) 1- BMPH-5507-F PULLER BLOCK (FIBER) 1- 635-33T-47.34" PD. FACE SPL. DRIVEN SPT. 1/2" HARDENED TEETH (ONE K5) | | | | | | | |
| 4 | 1 | DRIVE ARRANGEMENT CONSISTING OF: | | | | | | | |
| | | 1- REX "NEPTUNE" CENTRAL SHAFT PLANETARY GEAR SPEED REDUCER @ 25 RPM OUTPUT SPEED, RATIO = 43.75:1, 15 SERVICE FACTOR COMPLETE 1/2" AUTO GUARD TORQUE LIMITED COUPLER OSHA COUPLER GUARD, DECKPLATE & SLIDE PLATE. | | | | | | | |
| | | 1- 25 HP TEFC MOTOR @ 1200 RPM (324T MOTOR FRAME) | | | | | | | |
| | | 1- 635-9T-15.15" PD. FACE SPL. DRIVER SPT. 1/2" HARDENED TEETH (ONE K5) | | | | | | | |
| | | 1- 3/8" x 10.635" DRIVE CHAIN | | | | | | | |
| | | G26837-3-15-100 1- OILTIGHT CHAIN GUARD | | | | | | | |
| 5 | 2 | CROUSE-HINDS #AFD-0333-11 EMERGENCY STOP SWITCH COMPLETE 1/2" CABLES AND FITTINGS | | | | | | | |
| 6 | 1 | BEKO SPEED SWITCH - ELECTRO STOP MODEL SS-100 (FIBER) 1/2" MAGNETIC DISC & MOUNTING BRACKET. | | | | | | | |

WORK THIS DRAWG. WITH DRAWG. G26837-3-1, G26837-3-3

| PART SPECIFICATION | | REVISION BY DATE OR I.D. | REVISION NO. | LOCATION OF CHANGES |
|--------------------|--|--------------------------|--------------|---------------------|
| | | | | |

ERECTOR NOTE:
Corrections of minor misfits and a reasonable amount of cutting and reaming are considered a part of erection. Any error which prevents assembly by moderate use of drift pins, cutting and welding is to be reported and approval of correction or change is to be received in writing before proceeding.
Failure to comply will relieve Rexnord Inc. of all operational and monetary responsibility.

SAFETY CONSIDERATIONS:
Safety features included within the scope of equipment supply are shown on contract drawings. Complete conformance with all applicable safety codes is the responsibility of the owner.
Codes which are commonly applicable to safety related considerations for this equipment include, but are not limited to, ASME B15.1, ASME B20.1, OSHA, and MSHA.

| | | |
|-----------------------|-----------------|--|
| DESIGNED BY JDM | DATE 5-18-91 | CUSTOMER ABB RESOURCE RELAYWAY SYSTEMS |
| CHECKED BY J | DATE 7-18-91 | INSTALLED AT MID-CONNECTicut EXPANSION - HARTFORD, CT. |
| APPROVED BY | DATE | ENGINEER |
| APPROVED BY | DATE | CUSTOMER ORDER NO. |
| SCALE 3/4" = 1'-0" | | ESTIMATE NO. 1507-27 |
| | | GENERAL DRAWING NO. |
| | | TITLE (MSW AREA) SECTIONS & DETAILS FOR 72" WIDE INCLINED FEED CONVEYOR - CUST. UNIT # 1005 |
| | | UNIT 3 |

CERTIFICATION:
DO NOT USE FOR CONSTRUCTION UNLESS CERTIFIED

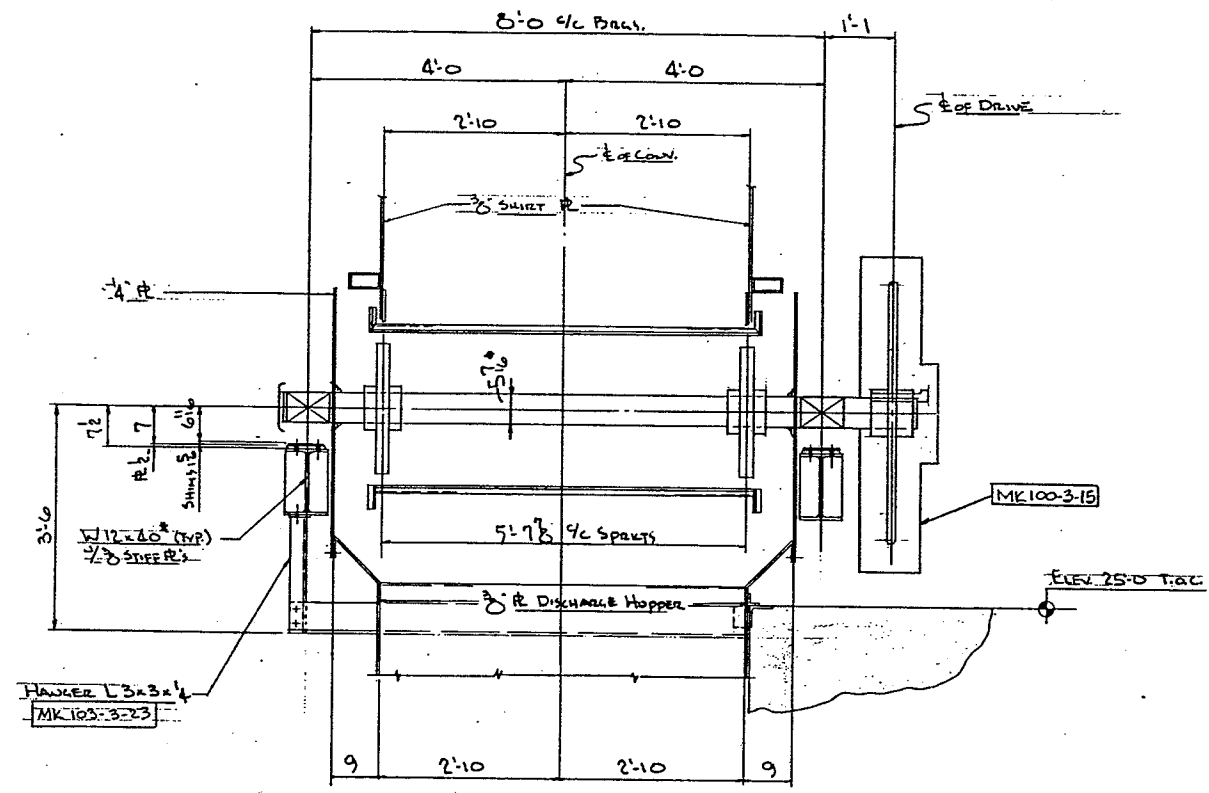
DATE: 4/28/91

CONFIDENTIAL - ALL RIGHTS RESERVED

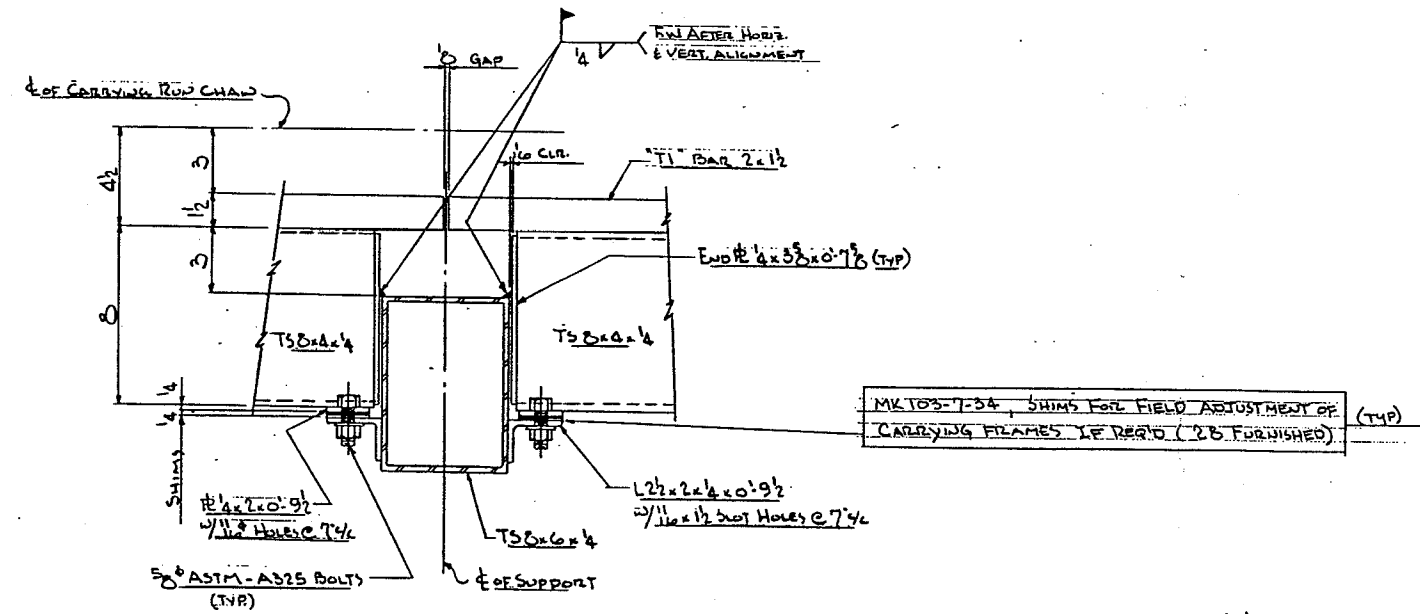
Rexnord Inc.
Mechanical Power Division
CONVEYING EQUIPMENT OPERATION
MILWAUKEE, WISCONSIN 53201

PART OR ORDER NO. G26837
DRAWING NO. G26837-3-2
REV. 2

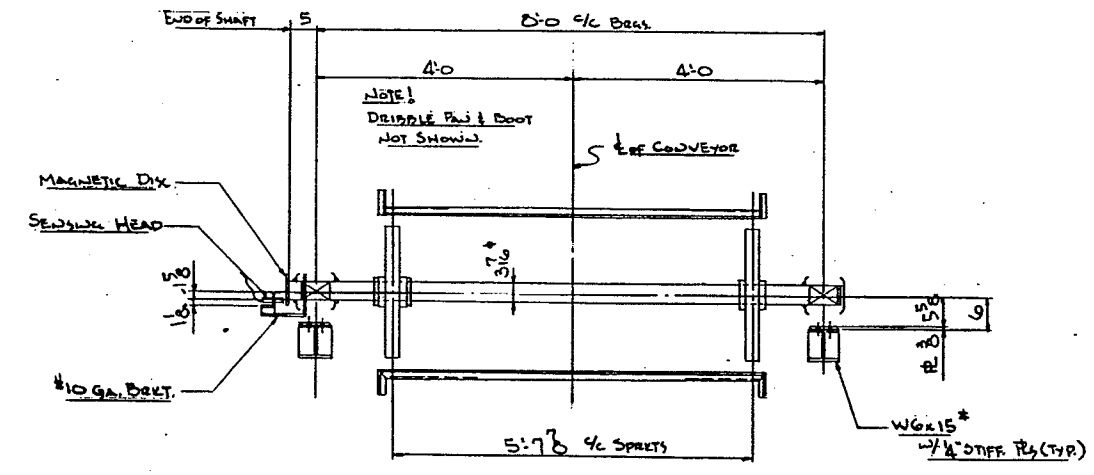
| LIST OF COMPONENTS | | | | | | |
|--|----------|-------------|------------------------------|--------------------------------|----------|---------|
| TITLE | UNIT | ITEM | REV. | PART OR ORDER NO. | QUANTITY | REMARKS |
| NOTE: REFERENCE SYMBOLS, WHERE SHOWN, ARE TO ASSIST IN LOCATING COMPONENTS IN DIFFERENT VIEWS OF THIS DRAWING ONLY. ALL LENGTHS ARE FINAL LENGTHS UNLESS SPECIFIED AS ROUGH ("ROUGH"). | | | | | | |
| REV. SYMBOL | QUANTITY | PART NUMBER | MATERIAL USE AND DESCRIPTION | MATERIAL SPEC. (SEE SPEC. NO.) | UNIT | REMARKS |



SECTION B-B



TYPICAL CARRYING RAIL FIELD CONNECTION DETAIL



SECTION C-C

WORK THIS DRAWING WITH DRAWING G26837-3-1 G26837-3-2

| NO. | REVISION | REVISION BY DATE OR E.D. |
|-----|----------|--------------------------|
| | | |
| | | |
| | | |

ERECTOR NOTE:
 Corrections of minor misfits and a reasonable amount of cutting and reaming are considered a part of erection. Any error which prevents assembly by moderate use of drift pins, cutting and welding is to be reported and approval of correction or change is to be received in writing before proceeding. Failure to comply will relieve Rexnord Inc. of all operational and monetary responsibility.

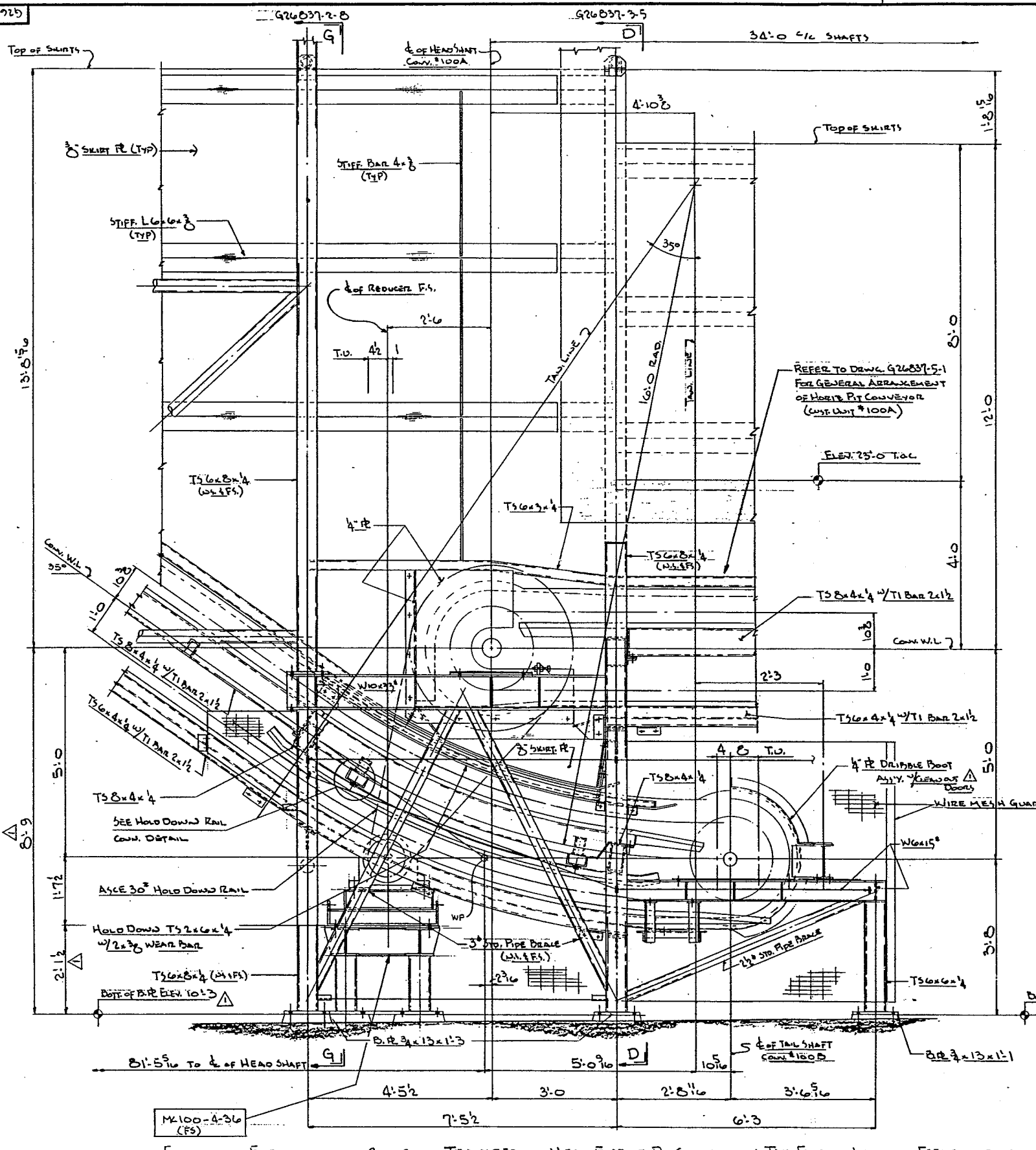
SAFETY CONSIDERATIONS:
 Safety features included within the scope of equipment supply are shown on contract drawings. Complete conformance with all applicable safety codes is the responsibility of the owner.
 Codes which are commonly applicable to safety related considerations for this equipment include, but are not limited to, ASME B15.1, ASME B20.1, OSHA, and MSHA.

| | | |
|-------------|-------|--------------|
| DESIGNED BY | DATE | CUSTOMER |
| | | |
| CHECKED BY | DATE | INSTALLED AT |
| | | |
| APPROVED BY | DATE | ENGINEER |
| | | |
| SCALE | TITLE | |
| | | |

| | | |
|--------------------|-------------------|---------------------|
| CUSTOMER ORDER NO. | REFERENCE NO. | GENERAL DRAWING NO. |
| | | |
| TITLE | | |
| | | |
| UNIT | PART OR ORDER NO. | |
| | | |
| | DRAWING NO. | |
| | | |

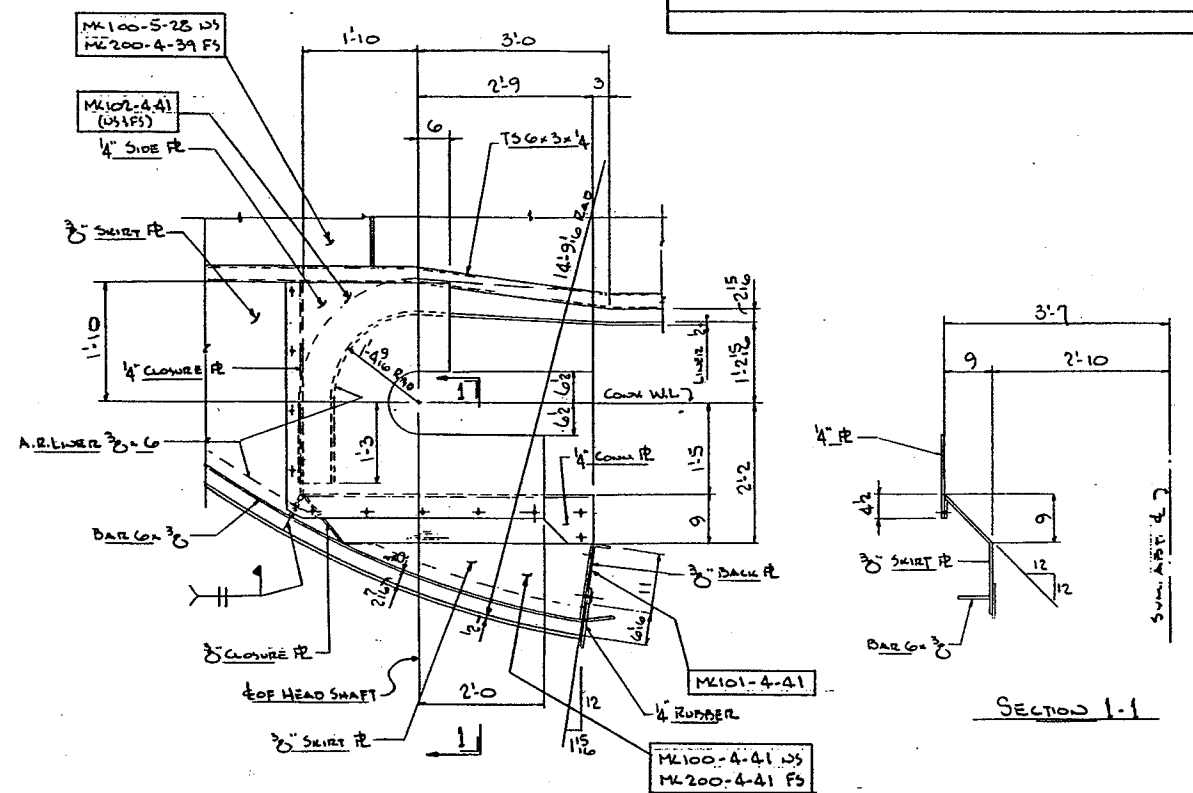
CERTIFICATION:
 DO NOT USE FOR CONSTRUCTION UNLESS CERTIFIED
 DRAWN BY: *[Signature]* DATE: 4/24/91
 CONFIDENTIAL — ALL RIGHTS RESERVED
Rexnord Inc.
 Mechanical Power Division
 CONVEYING EQUIPMENT OPERATION
 MILWAUKEE, WISCONSIN 53201
 DIV. NO. 35
 PART OR ORDER NO. G26837 DRAWING NO. G26837-3-3

4 - 6 - 1992b
CONCRETE

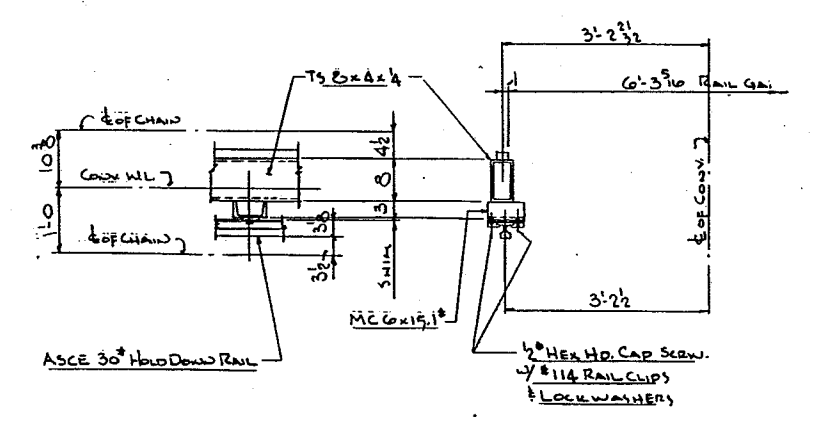


ENLARGED ELEVATION OF CONVEYOR TRANSFER AT HEAD END OF PIT CONVEYOR & TAIL END OF INCLINED FEED CONVEYOR

| LIST OF COMPONENTS | | | | |
|--|----------|------|-------------|-------------------|
| TITLE | UNIT | ITEM | REV. | PART OR ORDER NO. |
| NOTE: REFERENCE SYMBOLS, WHERE SHOWN ARE TO ASSIST IN LOCATING COMPONENTS IN DIFFERENT VIEWS OF THIS DRAWING. ONLY ALL LENGTHS ARE FINAL LENGTHS UNLESS SPECIFIED AS ROUGH ("ROUGH") | | | | |
| REV. SYMBOL | QUANTITY | UNIT | DESCRIPTION | DATE |



SKIRT PLATE & DRIBBLE HOPPER DETAIL AT HEAD END OF CONVEYOR



HOLD DOWN RAIL CONNECTION DETAIL

WORK THIS DRAW. WITH DRAWING G26837-5-1, G26837-3-5, G26837-2-8, G26837-5-1

| PART SPECIFICATION | |
|----------------------------|--|
| MATERIAL SPECIFICATION NO. | |
| PROCESS SPECIFICATION NO. | |
| DISTRIBUTION OF TRACKS | |

RECTOR NOTE:
Corrections of minor misfits and a reasonable amount of cutting and reaming are considered a part of erection. Any error which prevents assembly by moderate use of drift pins, cutting and welding is to be reported and approval of correction or change is to be received in writing before proceeding. Failure to comply will relieve Rexnord Inc. of all operational and monetary responsibility.

SAFETY CONSIDERATIONS:
Safety features included within the scope of equipment supply are shown on contract drawings. Complete conformance with all applicable safety codes is the responsibility of the owner.
Codes which are commonly applicable to safety related considerations for this equipment include, but are not limited to, ASME B15.1, ASME B20.1, OSHA, and MSHA.

| DATE | BY | DESCRIPTION |
|---------|-----|-------------|
| 3-15-91 | JDM | DESIGNED BY |
| 7-18-91 | J | CHECKED BY |
| | | APPROVED BY |
| | | DATE |

SCALE: 3/4" = 1'-0"

CERTIFICATION: DO NOT USE FOR CONSTRUCTION UNLESS CERTIFIED

Albert P. ... 4/28/91

CONFIDENTIAL - ALL RIGHTS RESERVED

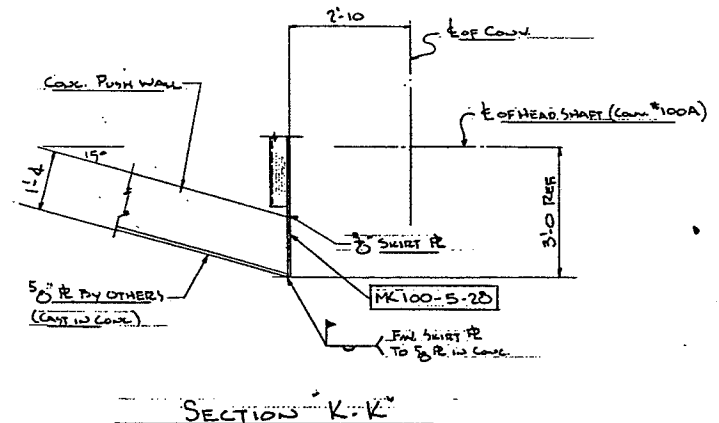
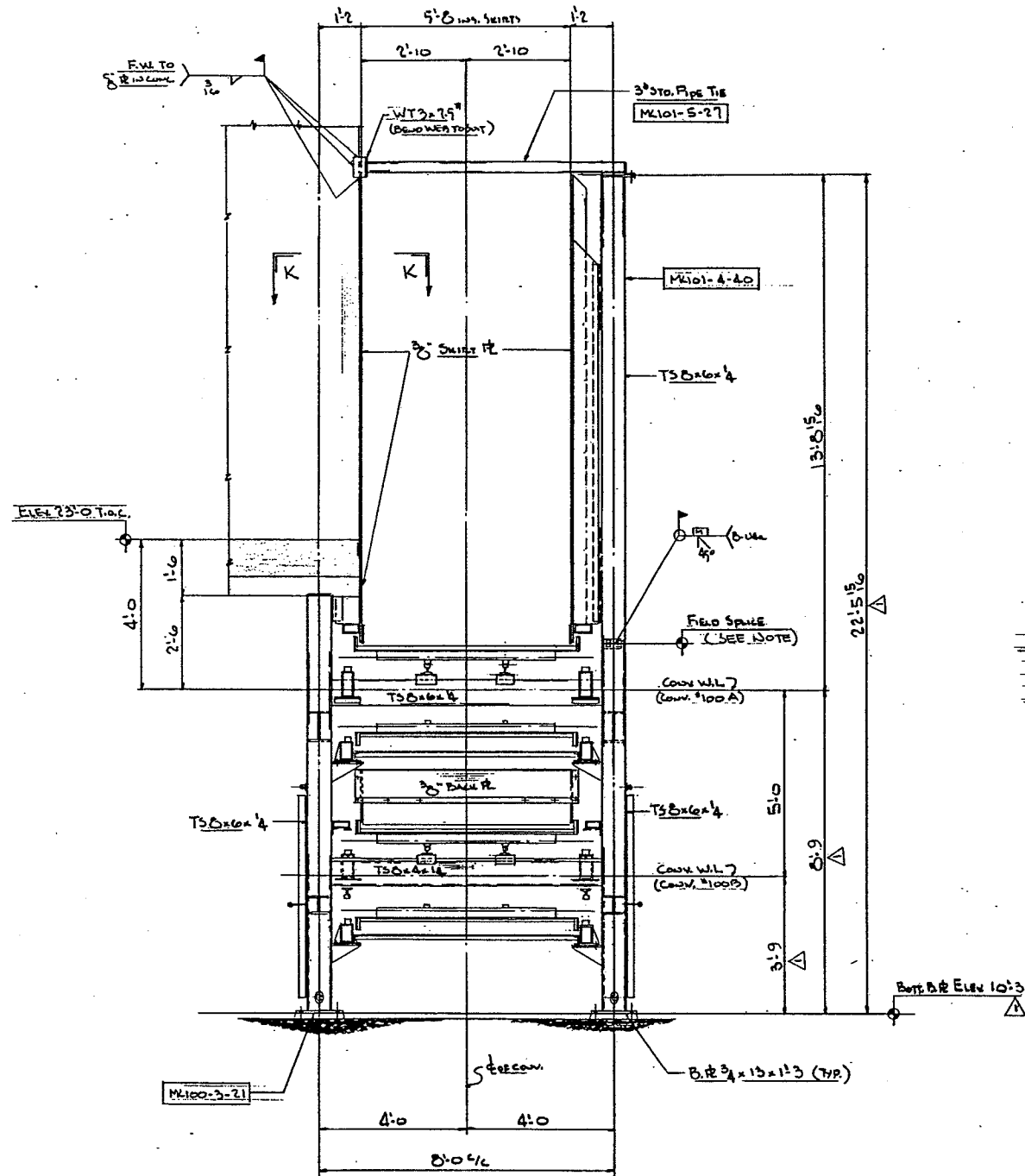
Rexnord Inc.
Mechanical Power Division
CONVEYING EQUIPMENT OPERATION
MILWAUKEE, WISCONSIN 53201

PART OR ORDER NO. G26837 DRAWING NO. G26837-3-4

DIV. NO. 35

S-E-14972D

| LIST OF COMPONENTS | | REV. | DESCRIPTION |
|---|----------|-------------|-------------------------------|
| TITLE | UNIT | REV. | PART OR ORDER NO. |
| NOTE: REFERENCE SYMBOLS, WHERE SHOWN, ARE TO ASSIST IN LOCATING COMPONENTS IN DIFFERENT VIEWS OF THIS DRAWING. ONLY ALL LENGTHS ARE FINAL LENGTHS UNLESS SPECIFIED AS ROUGH ("R") | | | |
| REF. SYMBOL | QUANTITY | PART NUMBER | MATERIAL SIZE AND DESCRIPTION |
| | | | MATERIAL QTY. FEET |



FIELD SPICE NOTE:
REMOVE ERECTION CLIPS AFTER
COMPLETION OF WELDING

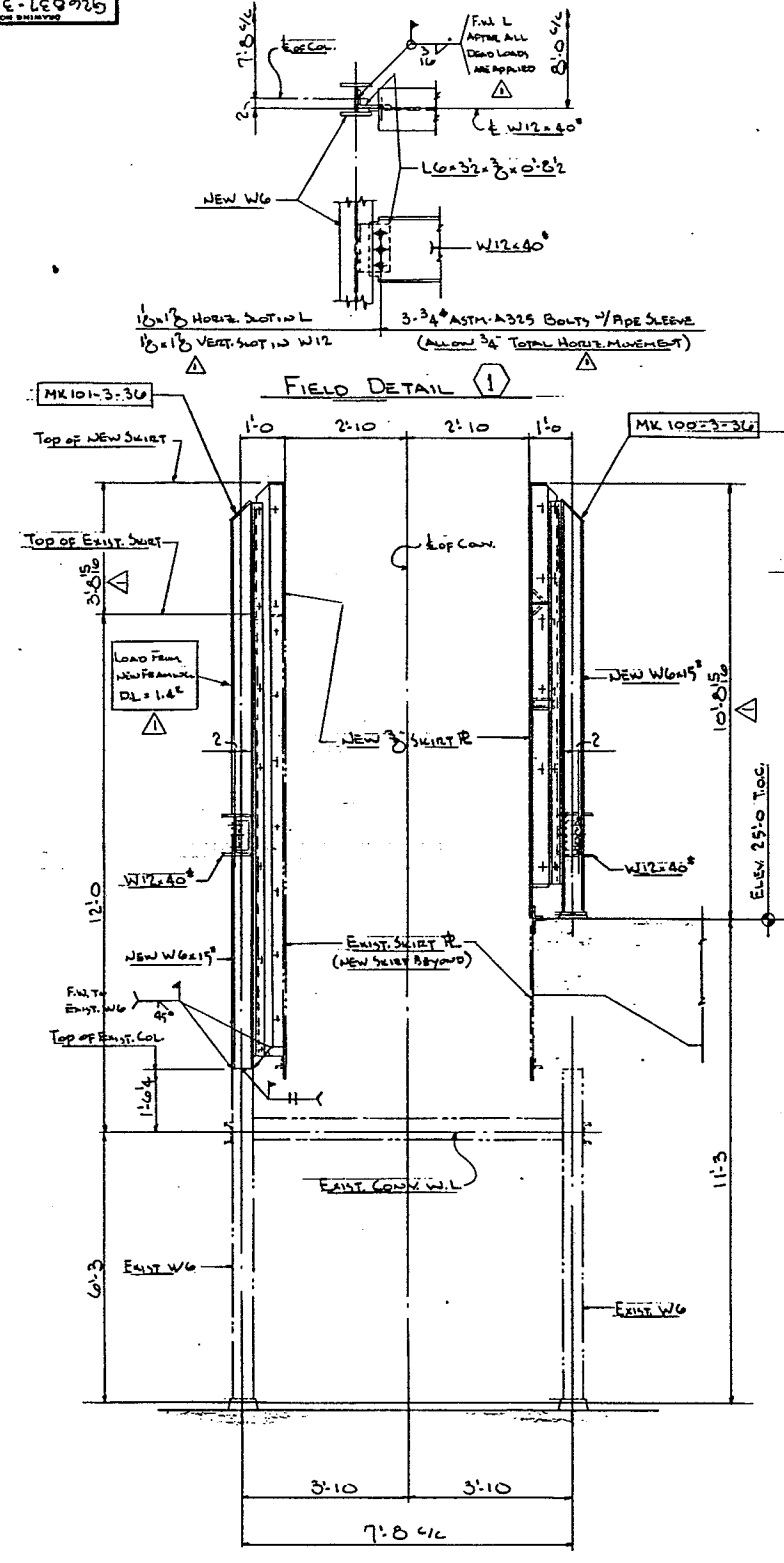
SECTION 'D-D'

WORK THIS DRAWG. WITH DRAWG. G 26837-3-1, G 26837-5-1

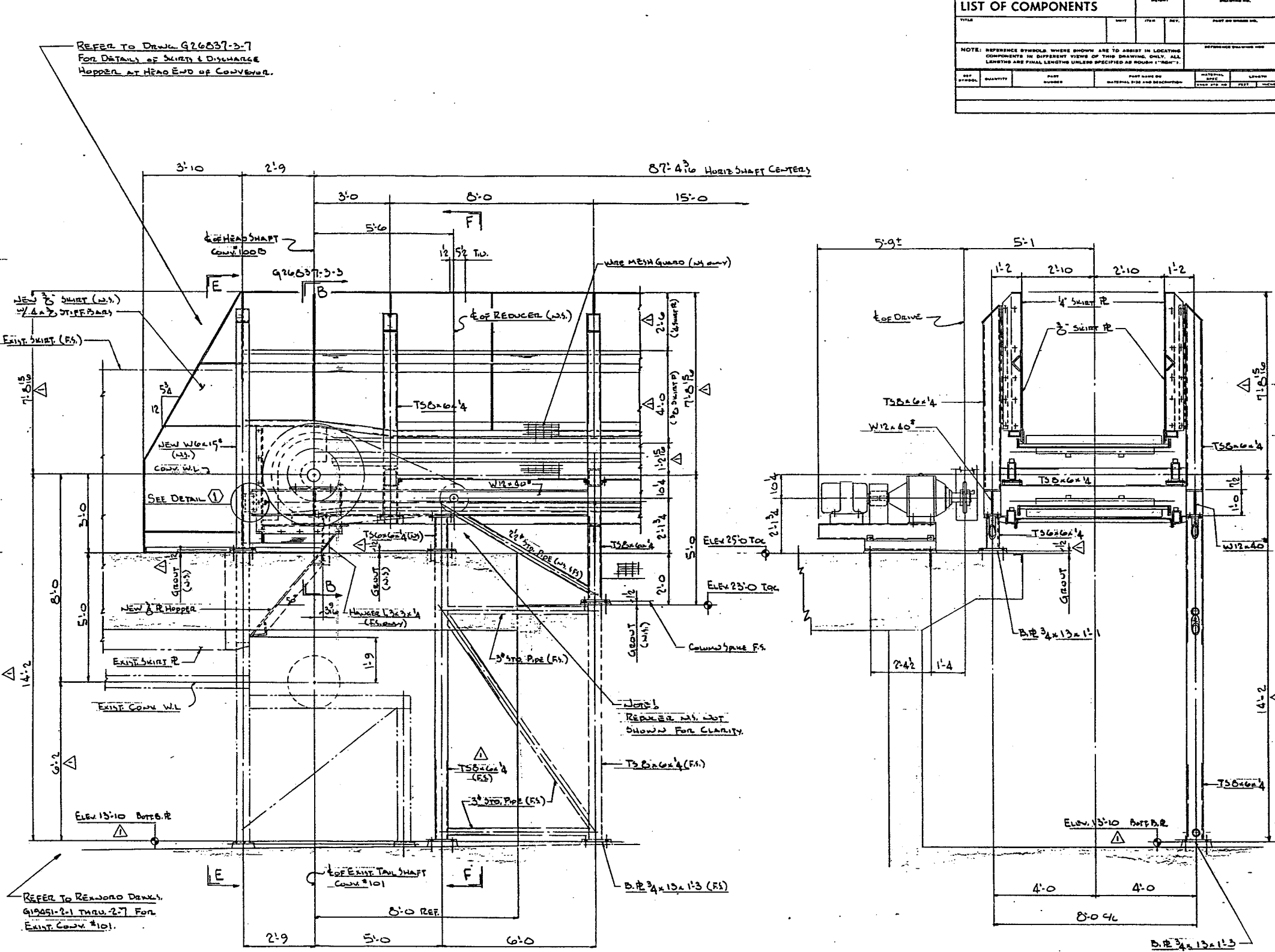
| | | | | | | | | | |
|---|--|--|--|--|--|--|--|---|--|
| <p>ERECTOR NOTE:</p> <p>Corrections of minor misfits and a reasonable amount of cutting and reaming are considered a part of erection. Any error which prevents assembly by moderate use of drift pins, cutting and welding is to be reported and approval of correction or change is to be received in writing before proceeding.</p> <p>Failure to comply will relieve Rexnord Inc. of all operational and monetary responsibility.</p> | | <p>SAFETY CONSIDERATIONS:</p> <p>Safety features included within the scope of equipment supply are shown on contract drawings. Complete conformance with all applicable safety codes is the responsibility of the owner.</p> <p>Codes which are commonly applicable to safety related considerations for this equipment include, but are not limited to, ASME B15.1, ASME B20.1, OSHA, and MSHA.</p> | | <p>DESIGNED BY: JDM</p> <p>CHECKED BY: J</p> <p>DATE: 3-18-91</p> <p>APPROVED BY:</p> <p>DATE:</p> <p>SCALE: 1/2" = 1'-0" U.S.</p> | | <p>CUSTOMER: ABB Resource Recovery Systems</p> <p>PROJECT: MHD-COAL ELECTRIC EXPANSION - HARTFORD, CT.</p> <p>CUSTOMER ORDER NO:</p> <p>ESTIMATE NO: 15-7-82</p> <p>ORIGINAL DRAWING NO:</p> <p>TITLE: (MHD) ANBA</p> <p>SECTION 4 & DETAILS FOR 72" WOE</p> | | <p>CERTIFICATION:</p> <p>DO NOT USE FOR CONSTRUCTION UNLESS CERTIFIED</p> <p>DATE: 4/28/91</p> <p>CONFIDENTIAL - ALL RIGHTS RESERVED</p> <p>Rexnord Inc.</p> <p>Mechanical Power Division</p> <p>CONVEYING EQUIPMENT OPERATION</p> <p>MILWAUKEE, WISCONSIN 53201</p> <p>DW. NO. 35</p> | |
|---|--|--|--|--|--|--|--|---|--|

9-E-169725

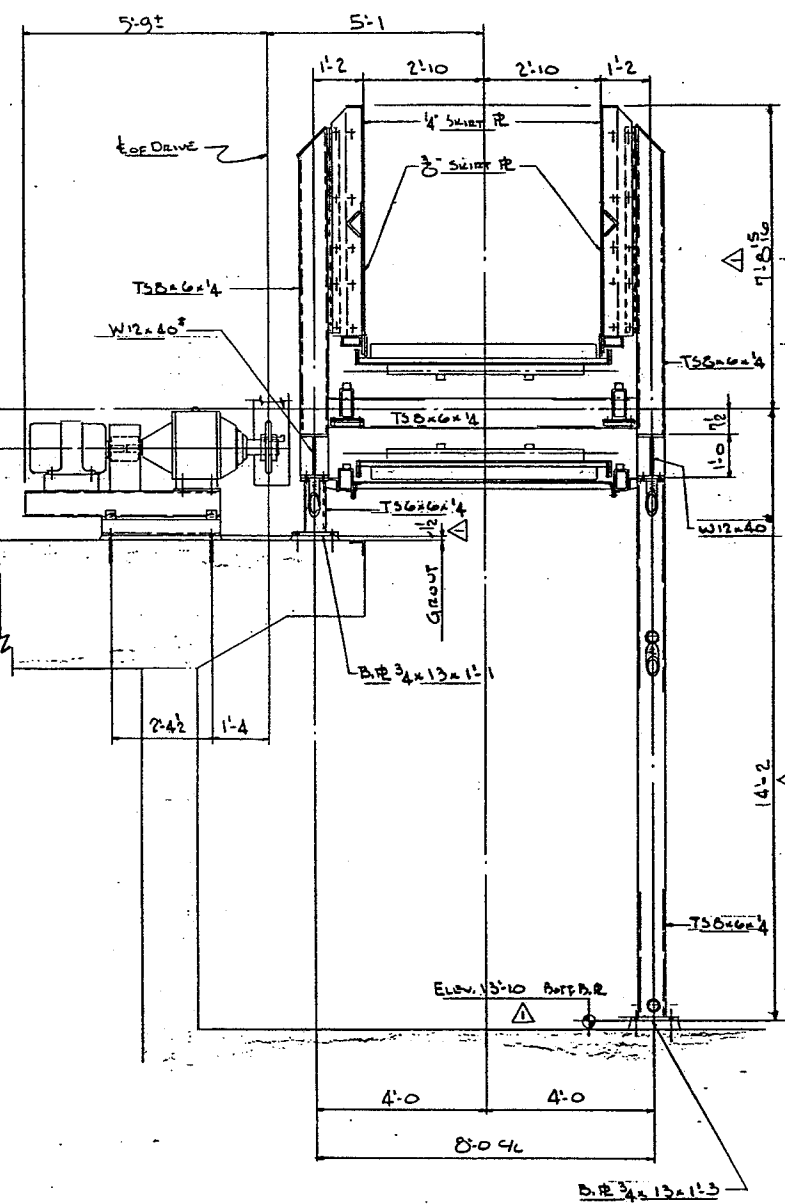
| LIST OF COMPONENTS | | QUANTITY | UNIT | REMARKS |
|--------------------|--|----------|------|---------|
| | | | | |
| | | | | |
| | | | | |
| | | | | |
| | | | | |



SECTION E-E



ELEVATION AT HEAD END OF 72\"/>



SECTION F-F

REFER TO DRAW G26837-3-7 FOR DETAILS OF SKIRT & DISCHARGE HOPPER AT HEAD END OF CONVEYOR.

REFER TO REVISION DRAWING G19251-2-1 THRU 2-7 FOR EXIST. CONV. #101.

WORK THIS DRAWING WITH DRAWING G26837-3-1 G26837-3-7

| NO. | REVISION | REVISION BY DATE |
|-----|----------|------------------|
| | | |
| | | |

ERECTOR NOTE:
Corrections of minor mistakes and a reasonable amount of cutting and reaming are considered a part of erection. Any error which prevents assembly by moderate use of drift pins, cutting and welding is to be reported and approval of correction or change is to be reported and approval in writing before proceeding. Failure to comply will relieve Rexnord Inc. of all operational and monetary responsibility.

SAFETY CONSIDERATIONS:
Safety features included within the scope of equipment supply are shown on contract drawings. Complete conformance with all applicable safety codes is the responsibility of the owner.
Codes which are commonly applicable to safety related considerations for this equipment include, but are not limited to, ASME B15.1, ASME B20.1, OSHA, and MSHA.

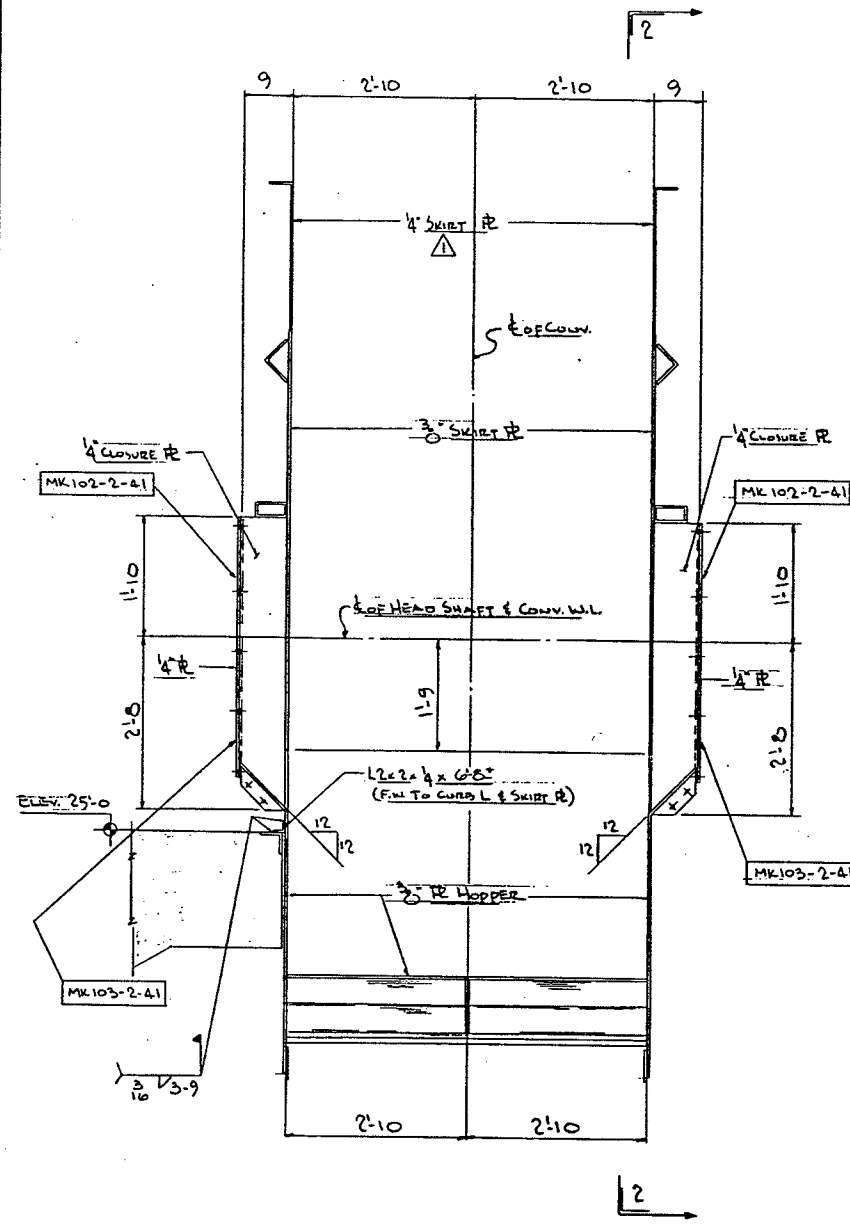
| | | |
|----------------------|---|--|
| DESIGNED BY Jon J | DATE 3-18-91 | CUSTOMER ABB Resource Recovery Systems |
| CHECKED BY J | DATE 3-18-91 | INSTALLER MID-CONNECTICUT EXPANSION - HARTFORD, CT. |
| APPROVED BY | DATE | CUSTOMER ORDER NO. 1507-R2 |
| SCALE 1/2\"/> | TITLE ELEVATION & SECTIONS AT HEAD END OF 72\"/> | UNIT 3 |

CERTIFICATION: DO NOT USE FOR CONSTRUCTION UNLESS CERTIFIED

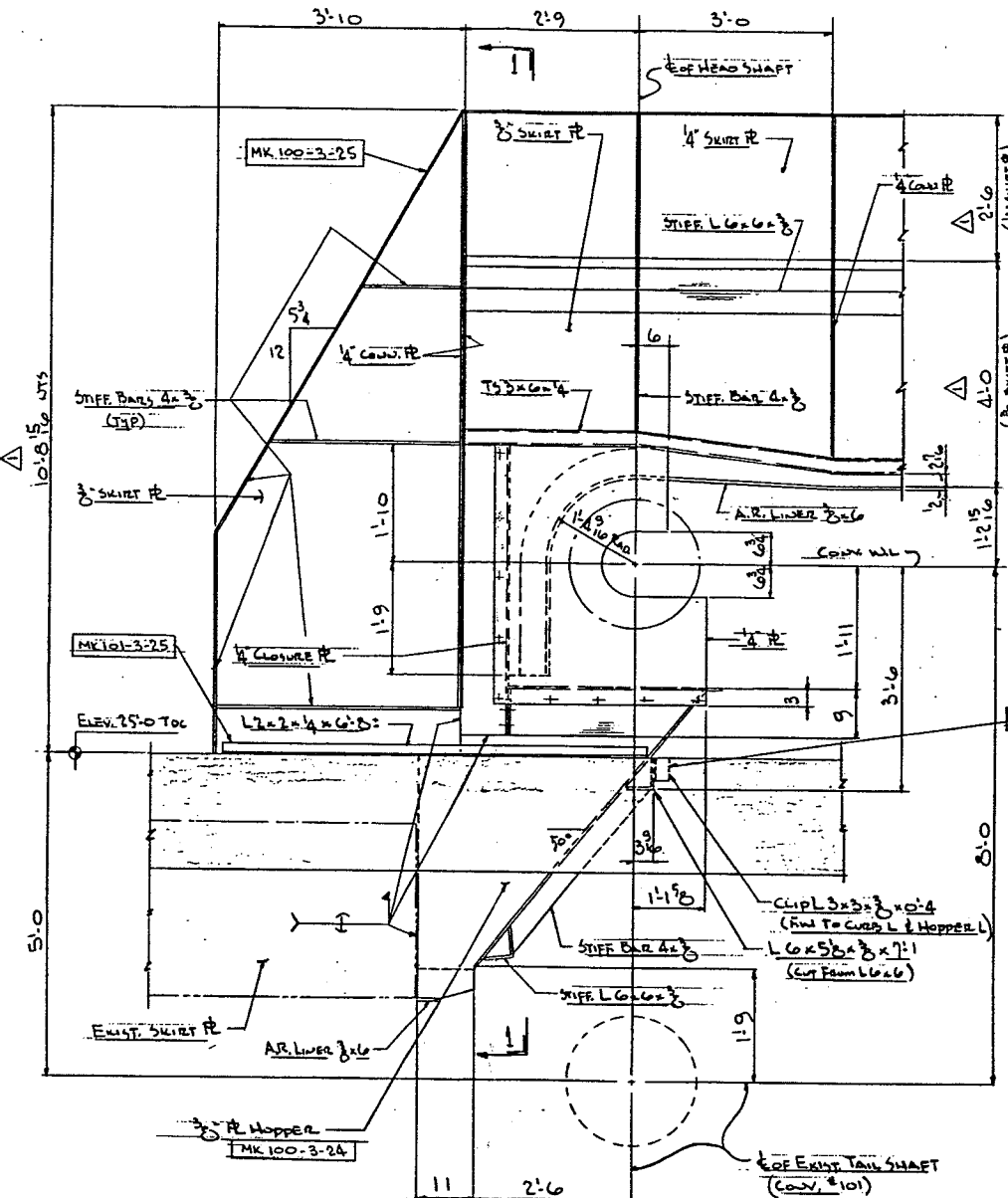
 DATE: 4/24/91

CONFIDENTIAL - ALL RIGHTS RESERVED
Rexnord Inc.
 Mechanical Power Division
 CONVEYING EQUIPMENT OPERATION
 MILWAUKEE, WISCONSIN 53201

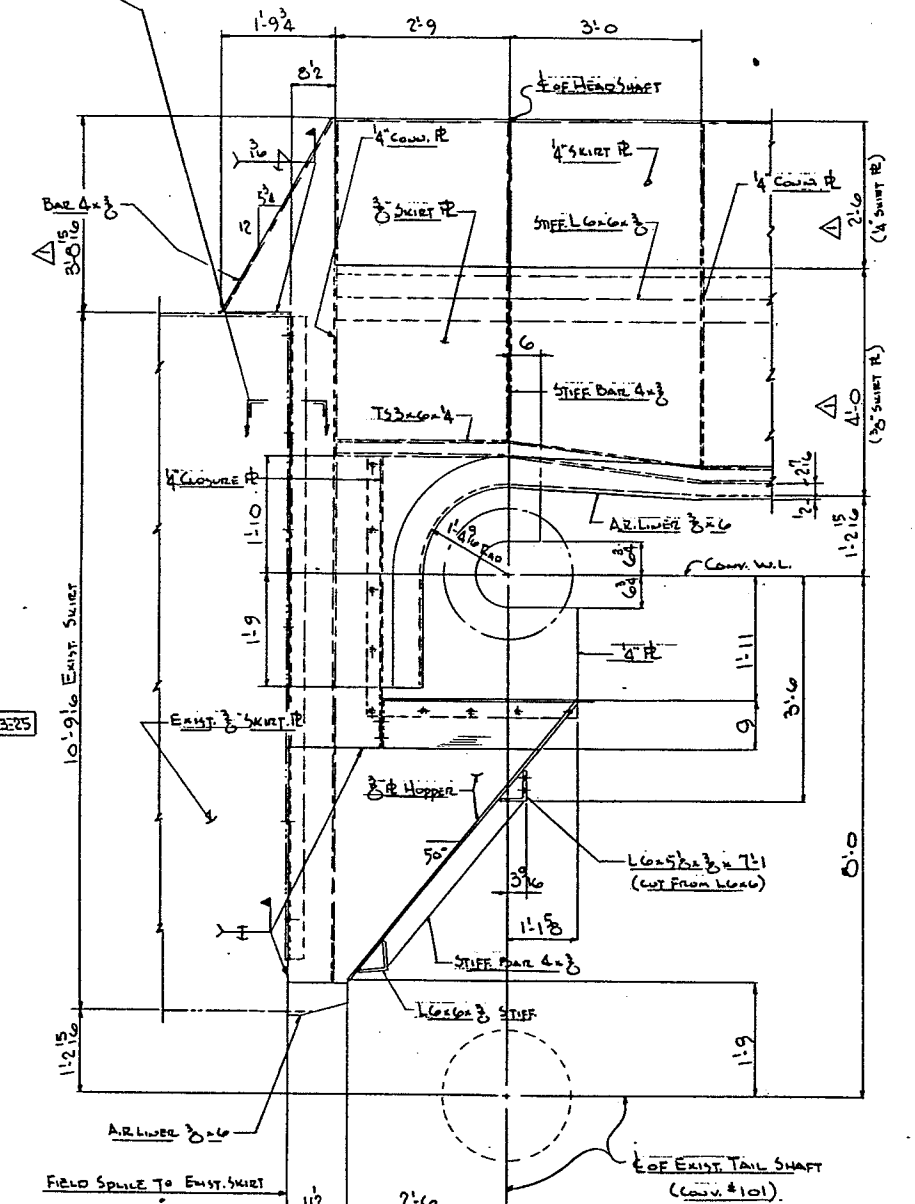
| LIST OF COMPONENTS | | | | | |
|--|----------|-------------|--|-------------------------------|--------|
| ITEM NO. | QUANTITY | PART NUMBER | PART NAME OR MATERIAL SIZE AND DESCRIPTION | MATERIAL SPEC. (SEE SPEC. OR) | LENGTH |
| NOTE: REFERENCE SYMBOLS WHERE SHOWN ARE TO ASSIST IN LOCATING COMPONENTS IN DIFFERENT VIEWS OF THIS DRAWING ONLY. ALL LENGTHS ARE FINAL LENGTHS UNLESS SPECIFIED AS ROUGH "R". | | | | | |



SECTION 1-1



ELEVATION OF SKIRTS & DISCHARGE HOPPER AT HEAD END OF INCLINED FEED CONVEYOR - CUST. UNIT # 100B



SECTION 2-2
(FACE SIDE SKIRT)

WORK THIS DRAWING WITH DRAWG. G26837-3-6

| | | | |
|--------------|--------------------|--------------------|--------------------|
| DESIGNED BY | DATE | CHECKED BY | DATE |
| APPROVED BY | DATE | APPROVED BY | DATE |
| REVISION NO. | REVISION BY / DATE | REVISION BY / DATE | REVISION BY / DATE |

ERECTOR NOTE:
Corrections of minor misfits and a reasonable amount of cutting and reaming are considered a part of erection. Any error which prevents assembly by moderate use of drift pins, cutting and welding is to be reported and approval of correction or change is to be received in writing before proceeding.
Failure to comply will relieve Rexnord Inc. of all operational and monetary responsibility.

SAFETY CONSIDERATIONS:
Safety features included within the scope of equipment supply are shown on contract drawings. Complete conformance with all applicable safety codes is the responsibility of the owner.
Codes which are commonly applicable to safety related considerations for this equipment include, but are not limited to, ASME B15.1, ASME B20.1, OSHA, and MSHA.

| | | |
|-------------|-------|--------------|
| DESIGNED BY | DATE | CUSTOMER |
| CHECKED BY | DATE | INSTALLER AT |
| APPROVED BY | DATE | ENGINEER |
| SCALE | TITLE | UNIT |

CERTIFICATION:
DO NOT USE FOR CONSTRUCTION UNLESS CERTIFIED

Michael Starni 4/28/91

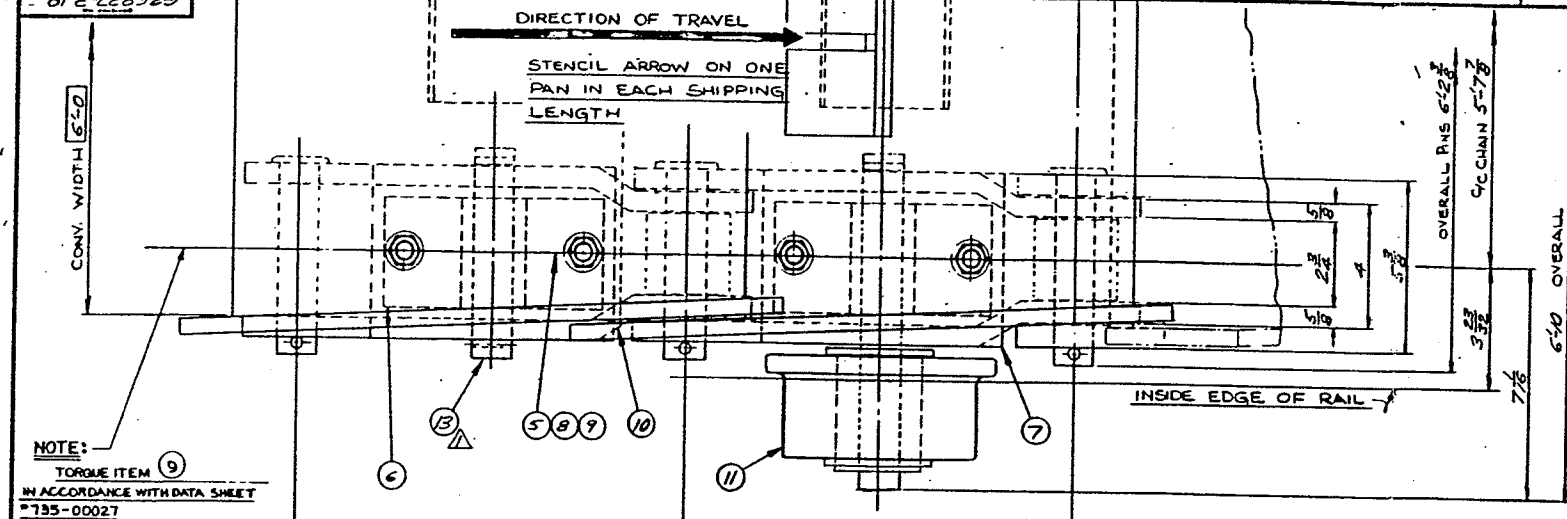
CONFIDENTIAL - ALL RIGHTS RESERVED

Rexnord Inc.
Mechanical Power Division
CONVEYING EQUIPMENT OPERATION
MILWAUKEE, WISCONSIN 53201

PART OR ORDER NO. G26837
DRAWING NO. G26837-3-7

DIV. NO. 35
REV. 1

61-E-LE8928



NOTE:
TORQUE ITEM 9
IN ACCORDANCE WITH DATA SHEET
#735-0027

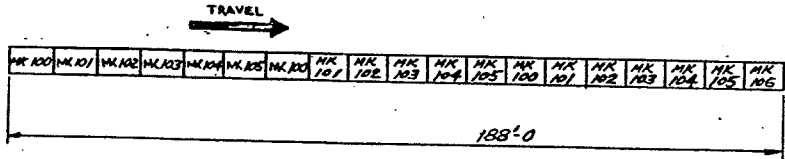
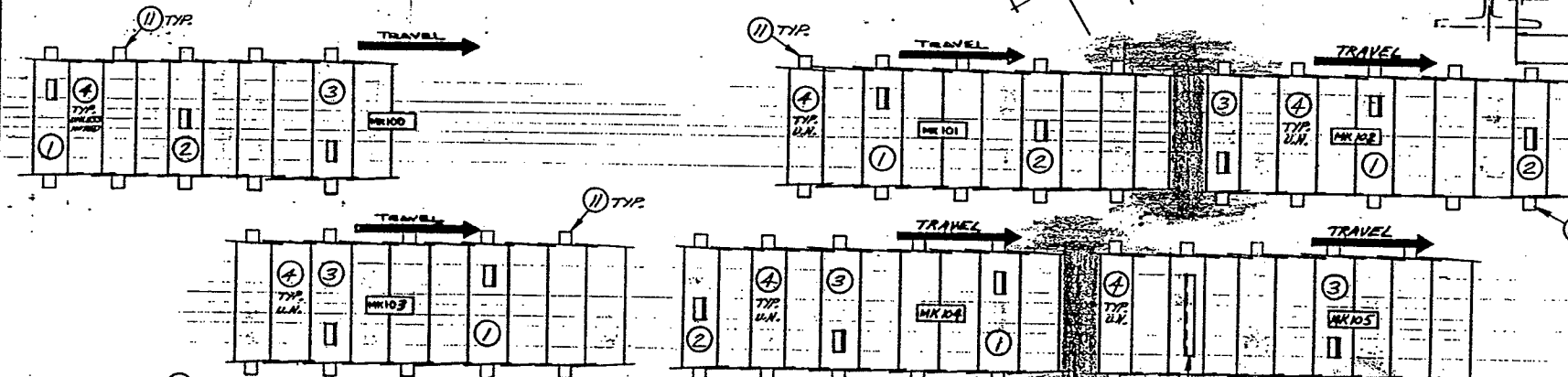
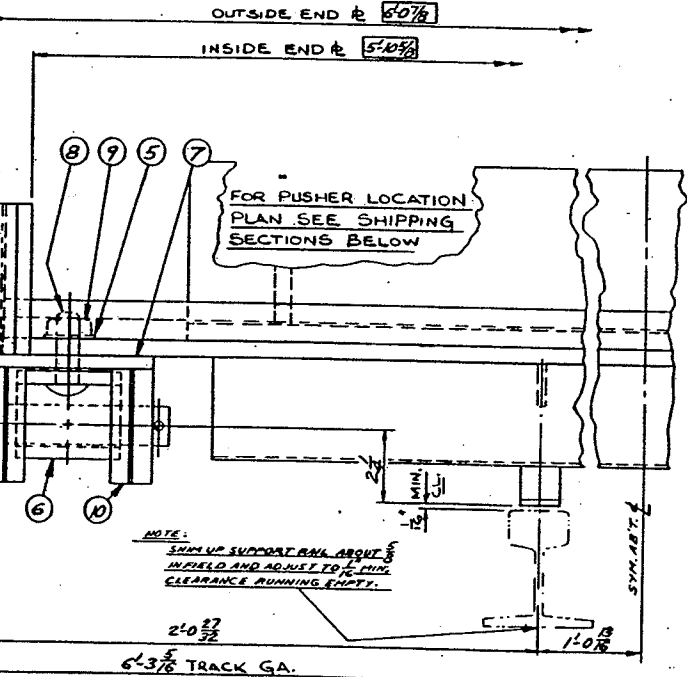
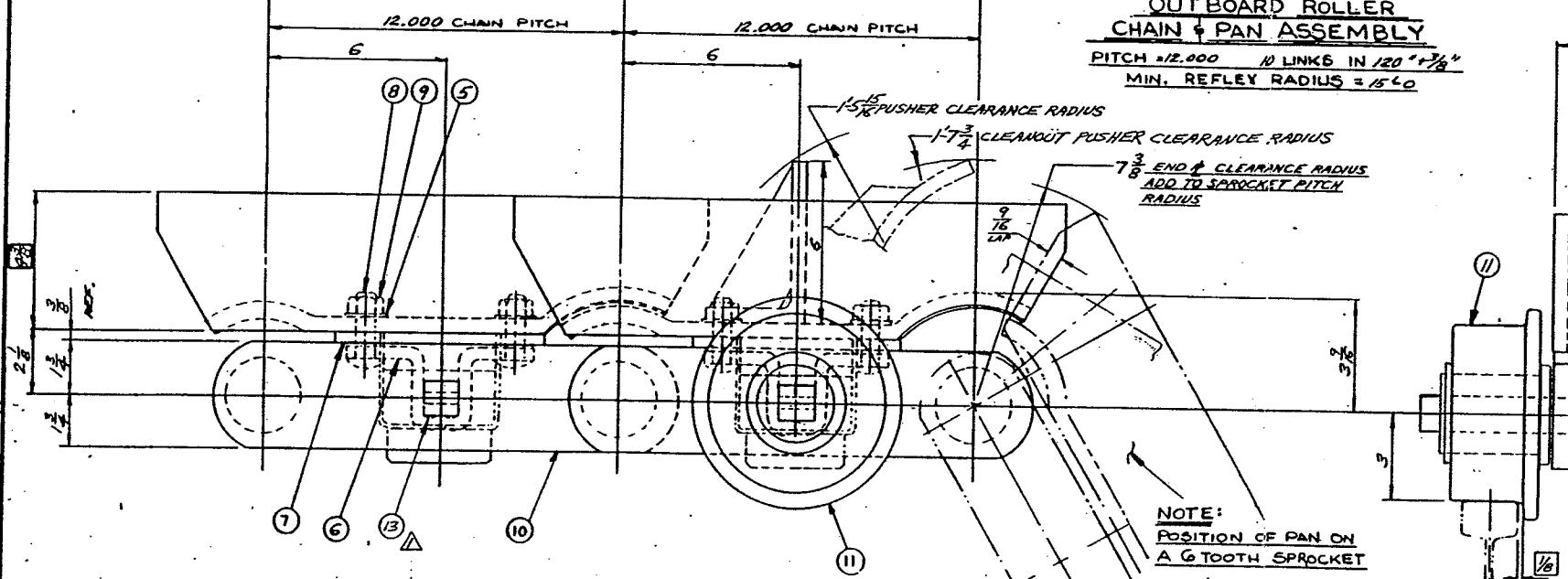
| MK. NO. | A | B | C | D | E | F | G | H | J | WT. PER MK. NO. |
|---------|--------------|--------------|--------------|---------------|---------------|---------------|--------------|--------------|--------------|------------------|
| 100 | 3 | 1 | 7 | 40 | 20 | 10 | 1 | 1 | 0 | 2,670 |
| 101 | 3 | 1 | 8 | 40 | 20 | 10 | 1 | 0 | 0 | 2,651 |
| 102 | 3 | 1 | 7 | 40 | 20 | 10 | 1 | 1 | 0 | 2,670 |
| 103 | 3 | 1 | 8 | 40 | 20 | 10 | 0 | 1 | 0 | 2,651 |
| 104 | 3 | 1 | 7 | 40 | 20 | 10 | 1 | 1 | 0 | 2,670 |
| 105 | 3 | 0 | 8 | 40 | 20 | 10 | 0 | 1 | 1 | 2,676 |
| 106 | 1 | 1 | 6 | 32 | 16 | 8 | 0 | 1 | 0 | 2,128 |
| 107 | 3 | 1 | 7 | 40 | 20 | 10 | 1 | 1 | 0 | 2,670 |
| 108 | 3 | 1 | 8 | 40 | 20 | 10 | 1 | 0 | 0 | 2,651 |
| 109 | 3 | 1 | 7 | 40 | 20 | 10 | 1 | 1 | 0 | 2,670 |

SHOP NOTE:
6 DIA. STYLE 2 ROLLERS EVERY OTHER PITCH

| LIST OF COMPONENTS | SEE TABLE | G 26837-3-19 |
|--------------------|-----------|--------------|
| 3 | | 626837 |

| MATERIAL FOR ONE MK. NO. (SEE TABLE) | "H" REQ'D |
|--|-----------|
| 1 "B" S35-60776-80 3/8" STYLE "A" PAN W/ PUSHER | |
| 2 "G" S35-60776-81 3/8" STYLE "A" PAN W/ PUSHER | |
| 3 "H" S35-60776-82 3/8" STYLE "A" PAN W/ PUSHER | |
| 4 "C" S35-60776-87 3/8" STYLE "A" PAN W/ PUSHER | |
| 5 "D" 335-00075-03 3/8" I.D. 1/2" O.D. 1/4" THICK HARDENED PUSHER | |
| 6 "E" 135-00284-01 TRI-LOK SADDLE | |
| 7 "E" 135-00283-01 3/8" SPACER | |
| 8 "D" 335-00075-08 3/8" UNC-2A X 2 1/2" LG. CARRIAGE BOLT GRADE 5 | |
| 9 "D" 335-00074-03 3/8" UNC-2B HEX LOCKNUT DREEMED TAB END | |
| 10 2 STRANDS 7 FITCHES IN EACH STRAND OF EQUALLY MATCHED RIGHT AND LEFT HAND STRANDS OF R2614-NH CHAIN | |
| 11 "F" 735-00007-80 6 DIA. STYLE 2 ROLLER STUBSHAFT ASSY | |
| 12 "J" S35-60843-80 PAN W/ CLEANOUT PUSHER | |
| 13 "F" 735-00003-80 STUBSHAFT ASSY | |

OUTBOARD ROLLER CHAIN & PAN ASSEMBLY
PITCH = 12.000 10 LINKS IN 120" X 7/8"
MIN. REFLEY RADIUS = 15' 0"



NOTE: QUANTITIES OF MARK NUMBERS SHOWN IN LIST OF COMPONENTS ARE FOR ONE CONVEYOR ONLY

SHOP ASSEMBLY NOTE:
EACH MK. NO. IS TO BE CLEARLY PAINTED ON EACH SECTION PRIOR TO SHIPPING. NOTE DIRECTION OF TRAVEL

ERECTION NOTE:
CORRECTIONS OF minor errors and a reasonable amount of cutting and bending are considered a part of erection. Any error which prevents assembly by moderate use of drift pins, cutting and welding is to be reported and approval of correction or change is to be received in writing before proceeding. FAILURE TO COMPLY WILL RELIEVE REXNORD INC.

FIELD ASSEMBLY KEY
IT IS ESSENTIAL FOR MAXIMUM PUSHER EFFICIENCY THAT EACH CHAIN AND PAN ASSEMBLY BE INSTALLED IN THE ORDER AS SHOWN ABOVE.

NOTE: CUSTOMER'S UNIT NO. 1005

H.F. DWG. NO. G26837-3-19

| <p>REVISIONS:</p> <table border="1"> <tr> <th>NO.</th> <th>DATE</th> <th>DESCRIPTION</th> </tr> <tr> <td>1</td> <td>3-12-91</td> <td>ISSUE FOR CONSTRUCTION</td> </tr> <tr> <td>2</td> <td>3-12-91</td> <td>CORRECTIONS</td> </tr> </table> | NO. | DATE | DESCRIPTION | 1 | 3-12-91 | ISSUE FOR CONSTRUCTION | 2 | 3-12-91 | CORRECTIONS | <p>CUSTOMER: ARB RESOURCE RECOVERY SYSTEMS INSTALLATION: MID-CONNECTICUT WASTE-TO-ENERGY FACILITY, HARTFORD, CT</p> | <p>CERTIFICATION: DO NOT USE FOR CONSTRUCTION UNLESS CERTIFIED</p> <p>CERTIFIED BY: [Signature] REXNORD INC.</p> |
|---|--|--|-------------|---|---------|------------------------|---|---------|-------------|---|--|
| NO. | DATE | DESCRIPTION | | | | | | | | | |
| 1 | 3-12-91 | ISSUE FOR CONSTRUCTION | | | | | | | | | |
| 2 | 3-12-91 | CORRECTIONS | | | | | | | | | |
| <p>DATE: 3-12-91 DRAWN BY: B.T. CHECKED BY: B.T.</p> | <p>SCALE: NONE PROJECT NO.: 1507-R2 JOB NO.: WME-3004-372/G26837-3-1</p> | <p>CONFIDENTIAL - ALL RIGHTS RESERVED</p> <p>Rexnord Inc. CONVEYING EQUIPMENT DIVISION MILWAUKEE, WISCONSIN 53301</p> | | | | | | | | | |