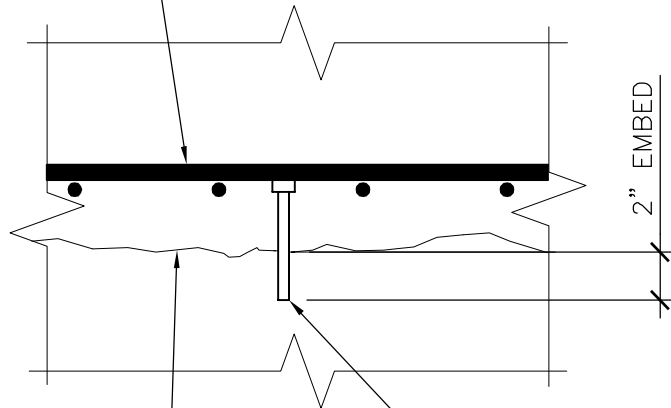


REINFORCING STEEL



2" EMBED

EXISTING CONCRETE  
SURFACE ROUGHEN  
TO A 1/4" AMPLITUDE  
AND COATED WITH  
BONDING AGENT

3/8" HILTI HIT-TZ WITH  
NUT SHEAR PIN. BOND  
NUT TO ROD WITH EPOXY  
MIN. 4 7/8" LONG

NOTE: PROVIDE SHEAR PINS PER SPECIFICATION SECTION 03210 -  
REINFORCEMENT REPAIR AT 12" OC EACH DIRECTION TYP.

<b>5</b>	<b>SECTION</b>
<b>S-401</b>	SCALE: 1 1/2" = 1'-0"

REVISED: -

**CONNECTICUT  
RESOURCES  
RECOVERY  
AUTHORITY**  
TEL. NO. (860)-757-7700  
FAX NO. (860)-757-7742

**URS**  
500 ENTERPRISE DRIVE  
ROCKY HILL, CONNECTICUT  
1-(860)-529-8882

PROJECT NAME: CRRA WFP SLAB REPAIR  
HARTFORD, CT

SKETCH NAME: SECTION 5/S-401

SKETCH NUMBER:

PROJECT NO.:  
36937394.00000

DATE:  
12/03/07

**SKS-1**